

PLASTIC PIPE THROUGH GYPSUM WALL ASSEMBLY

F-RATING = 1-HR.

FT-RATING = 1/2-HR.

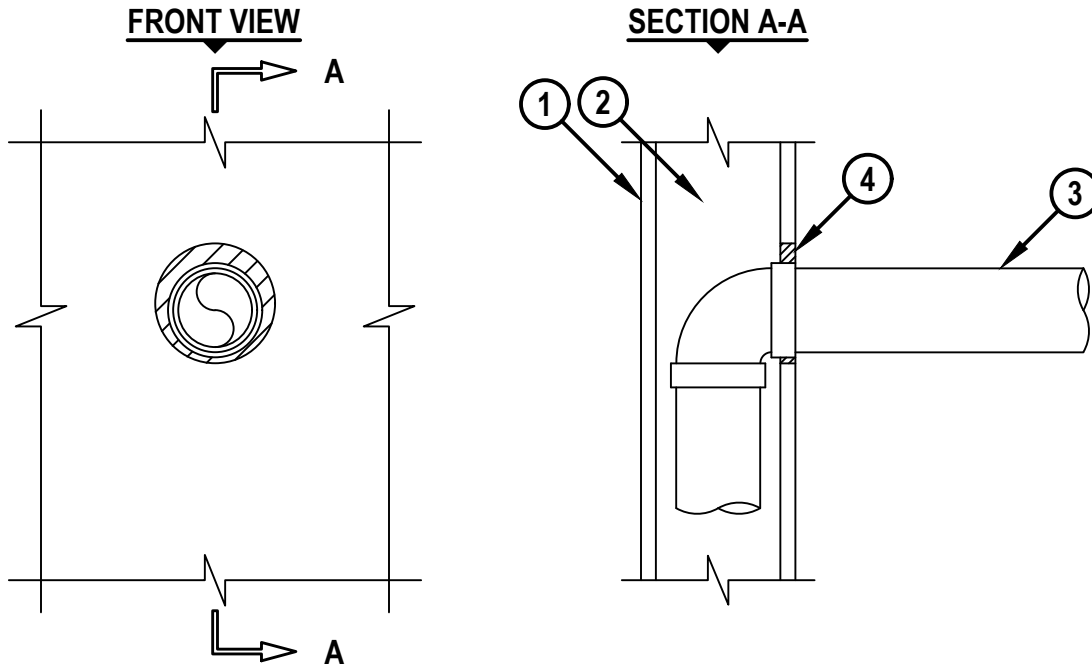
FH AND FTH-RATINGS = 0-HR.

NOTE : TESTED WITH A 50 Pa PRESSURE DIFFERENTIAL

L-RATING AT AMBIENT = LESS THAN 5.1 / L / S / M²

L-RATING AT 400°F = LESS THAN 5.1 / L / S / M²

cUL WL2771c.060321



1. GYPSUM WALL ASSEMBLY (UL/cUL CLASSIFIED U300, U400, V400, OR W400 SERIES) (1-HR. FIRE-RATING).
2. [NOT SHOWN] WOOD STUDS TO CONSIST OF NOMINAL 2 x 4 LUMBER. STEEL STUDS TO BE MINIMUM 3-5/8" WIDE.
3. PENETRATING ITEM MAY CONSIST OF ONE OF THE FOLLOWING :
 - A. MAXIMUM 2" NOMINAL DIAMETER XFR-PVC PLASTIC PIPE (SCH 40) (CLOSED OR VENTED PIPING SYSTEM) WITH XFR-PVC ELBOW.
 - B. MAXIMUM 2" NOMINAL DIAMETER PVC PLASTIC PIPE (SCH 40, SOLID CORE) (CLOSED OR VENTED PIPING SYSTEM) WITH PVC ELBOW.
 - C. MAXIMUM 3/4" NOMINAL DIAMETER CROSS-LINKED POLYETHYLENE (PEX) TUBING (SDR 9) (CLOSED OR VENTED PIPING SYSTEM) WITH BRASS OR COPPER ELBOW.
4. MINIMUM 5/8" DEPTH HILTI FS-ONE MAX INTUMESCENT FIRESTOP SEALANT.

NOTES : 1. MAXIMUM DIAMETER OF OPENING = 3-1/2", EXCEPT FOR 3/4" (AND SMALLER) PENETRATING ITEMS THE MAXIMUM DIAMETER OF OPENING = 1-1/2".
 2. ANNULAR SPACE = MINIMUM 1/4", MAXIMUM 7/8".



HILTI, Inc.
 Plano, Texas USA (800) 879-8000

Sheet	1 of 1
Scale	1/8" = 1"
Date	June 03, 2021

Drawing No.
cUL
WL2771c