

**TOP OF WALL JOINT : GYPSUM WALL ASSEMBLY**

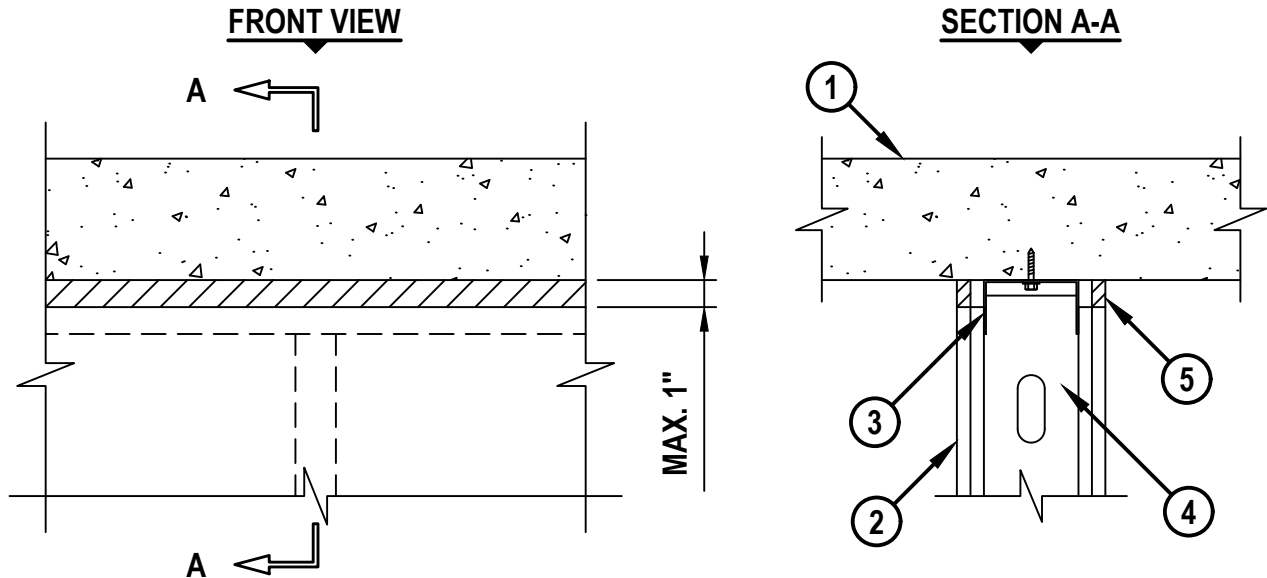
ASSEMBLY RATING = 1-HR. OR 2-HR.

CLASS II MOVEMENT CAPABILITIES - 18.75% COMPRESSION OR EXTENSION

L-RATING AT AMBIENT = LESS THAN 1 CFM / LIN FT

L-RATING AT 400°F = LESS THAN 1 CFM / LIN FT

HWD0931b.102621



**1. CONCRETE FLOOR ASSEMBLY :**

- A. LIGHTWEIGHT OR NORMAL WEIGHT CONCRETE FLOOR (MINIMUM 4-1/2" THICK).
- B. ANY UL/cUL CLASSIFIED PRECAST (HOLLOW-CORE) CONCRETE FLOOR (MINIMUM 6" THICK).

**2. GYPSUM WALL ASSEMBLY (UL/cUL CLASSIFIED U400, V400, OR W400 SERIES) (1-HR. OR 2-HR. FIRE-RATING) (2-HR. SHOWN) CONSISTING OF MINIMUM 1/2" THICK TYPE-C GYPSUM BOARD. THE HOURLY RATING OF THE JOINT SYSTEM IS DEPENDENT UPON THE HOURLY RATING OF THE WALL ASSEMBLY.**

- 3. CEILING RUNNER (MIN. 25 GA., FLANGE HEIGHT OF CEILING RUNNER SHALL BE MINIMUM 1/4" GREATER THAN MAXIMUM EXTENDED JOINT WIDTH) FASTENED TO UNDERSIDE OF CONCRETE FLOOR WITH STEEL MASONRY ANCHORS OR STEEL FASTENERS (SPACED MAX 24" O.C.).**
- 4. STEEL STUDS (MIN. 3-1/2" WIDE), CUT 1/2" TO 3/4" LESS IN LENGTH THAN ASSEMBLY HEIGHT, NESTING IN CEILING RUNNER WITHOUT ATTACHMENT.**
- 5. MINIMUM 1/2" DEPTH HILTI CP 606 FLEXIBLE FIRESTOP SEALANT.**

**NOTES :** 1. MAXIMUM WIDTH OF JOINT = 1".  
 2. [OPTIONAL - NOT SHOWN] MINERAL WOOL, GLASS-FIBER, OR POLYURETHANE/POLYETHYLENE FOAM BACKER ROD MAY BE USED AS A BACKER FOR FIRESTOP SEALANT IN 2-HR. WALLS.

 <b>Hilti Firestop Systems</b>	HILTI, Inc. Plano, Texas USA (800) 879-8000	Sheet 1 of 1	Drawing No.
		Scale 9/64" = 1"	<b>HWD</b>
			Date Oct. 26, 2021
<b><i>Saving Lives through Innovation and Education</i></b>			