

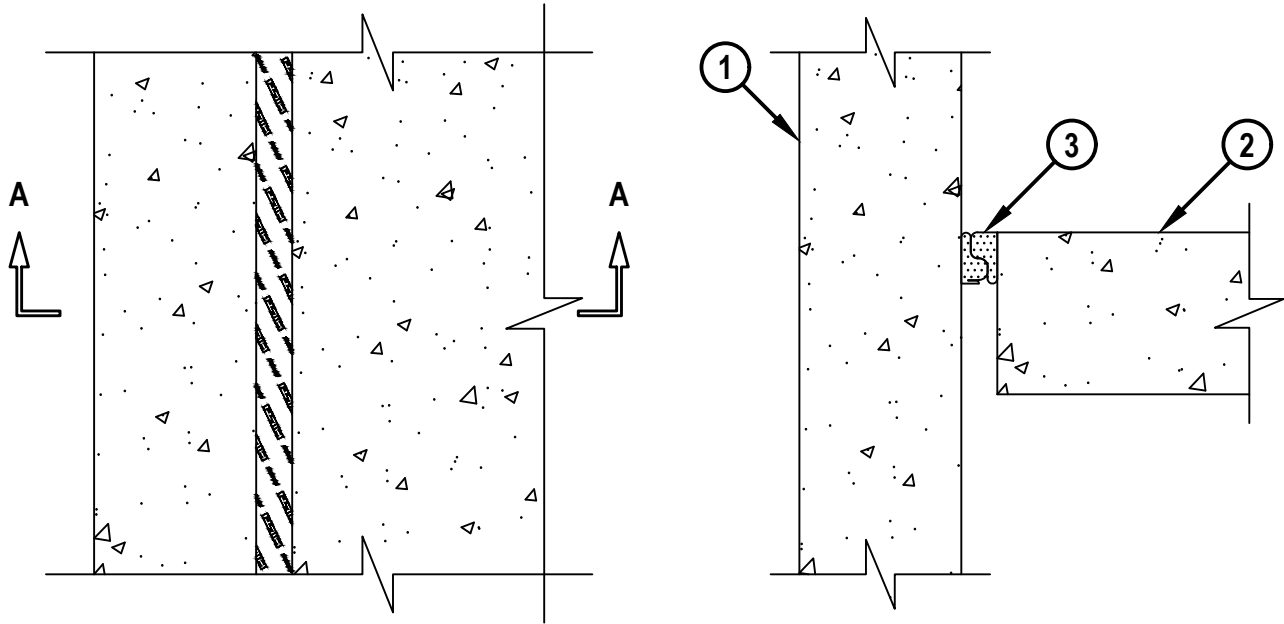
FIRE-RATED JOINT THROUGH CONCRETE FLOOR ASSEMBLY

ASSEMBLY RATING = 2-HR.

CLASS II MOVEMENT CAPABILITIES - SEE NOTE NO. 2 BELOW

TOP VIEW

SECTION A-A



FWD0103a.011323

1. CONCRETE WALL ASSEMBLY :

- A. LIGHTWEIGHT OR NORMAL WEIGHT CONCRETE WALL (MINIMUM 4-1/2" THICK).
- B. ANY UL/cUL CLASSIFIED CONCRETE BLOCK WALL.

2. LIGHTWEIGHT OR NORMAL WEIGHT CONCRETE FLOOR ASSEMBLY (MINIMUM 4-1/2" THICK).

- 3. HILTI CFS-TTS MD OS OR HILTI CFS-TTS MD 600. BOTH SIDES OF HILTI CFS-TTS MD ARE INSERTED INTO THE JOINT BY ROLLING THE PRODUCT ONTO ITSELF WITH THE OPPOSING CONTOUR ENDS NESTING TOGETHER. THE TOP SURFACE OF THE PRODUCT SHALL BE FLUSH WITH TOP OF THE CONCRETE FLOOR. FOR FLOORS THICKER THAN 4-1/2", THE PRODUCT MAY BE RECESSED FROM THE TOP SURFACE OF THE FLOOR AT A MAX DISTANCE OF 1-1/4".**

NOTES : 1. WIDTH OF JOINT = MINIMUM 1/2", MAXIMUM 1-1/8".
 2. MOVEMENT RANGES TO BE DETERMINED AS FOLLOWS :
 A. FOR MAXIMUM 50% COMPRESSION OR MAXIMUM 12.5% EXTENSION, THE NOMINAL JOINT WIDTH SHALL BE 1".
 B. FOR MAXIMUM 44% COMPRESSION ONLY, THE NOMINAL JOINT WIDTH SHALL BE 1-1/8".



HILTI, Inc.
 Plano, Texas USA (800) 879-8000

Sheet	1 of 1
Scale	3/16" = 1"
Date	Jan. 13, 2023

Drawing No.
**FWD
 0103a**