

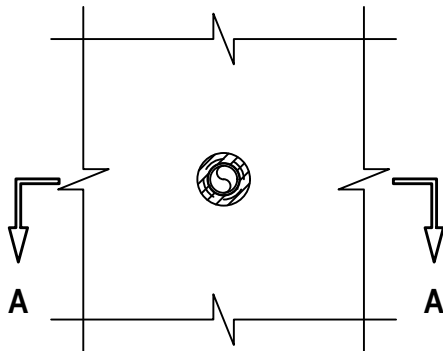
PLASTIC PEX PIPE THROUGH CONCRETE FLOOR/CEILING ASSEMBLY

F AND FH-RATINGS = 1-HR.

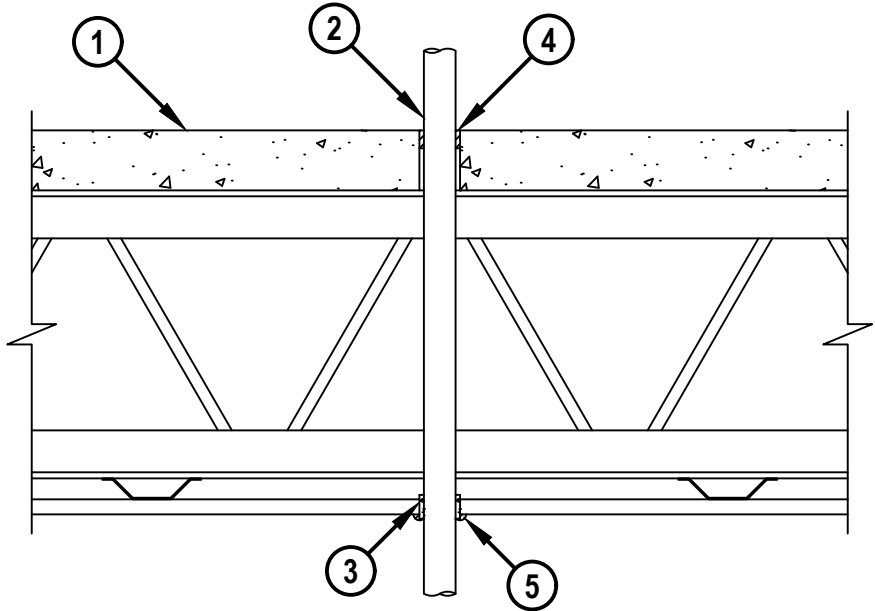
FT AND FTH-RATINGS = 1/4-HR.

NOTE : TESTED WITH A 50 Pa PRESSURE DIFFERENTIAL

BOTTOM VIEW



SECTION A-A



1. CONCRETE AND STEEL JOIST FLOOR/CEILING ASSEMBLY (UL/cUL CLASSIFIED G500 SERIES) (1-HR. FIRE-RATING).
2. PENETRATING ITEM TO BE ONE OF THE FOLLOWING :
 - A. MAXIMUM 1" NOMINAL DIAMETER CROSS LINKED POLYETHYLENE (PEX) SDR 9 TUBING (CLOSED OR VENTED PIPING SYSTEM).
 - B. MAXIMUM 1" NOMINAL DIAMETER AQUARISE CPVC PLASTIC PIPE (SDR 11) MANUFACTURED BY IPEX, INC. (CLOSED PIPING SYSTEM ONLY).
3. HILTI CP 648E WRAP STRIP (NOMINAL 3/16" THICK x 1" WIDE) CONTINUOUSLY WRAPPED AROUND THE OUTER CIRCUMFERENCE OF THE TUBE, CENTERED WITHIN GYPSUM CEILING, COVERING ONCE, WITH ENDS HELD IN PLACE WITH TAPE.
4. MINIMUM 3/4" DEPTH HILTI FS-ONE MAX INTUMESCENT FIRESTOP SEALANT.
5. MINIMUM 1/4" BEAD HILTI FS-ONE MAX INTUMESCENT FIRESTOP SEALANT AT WRAP STRIP/GYPSUM INTERFACE.

NOTES : 1. DIAMETER OF OPENING = MAXIMUM 1" LARGER THAN OUTSIDE DIAMETER OF PIPE.
 2. ANNULAR SPACE = MINIMUM, 1/4", MAXIMUM 1/2".