

BLANK OPENING THROUGH GYPSUM WALL ASSEMBLY

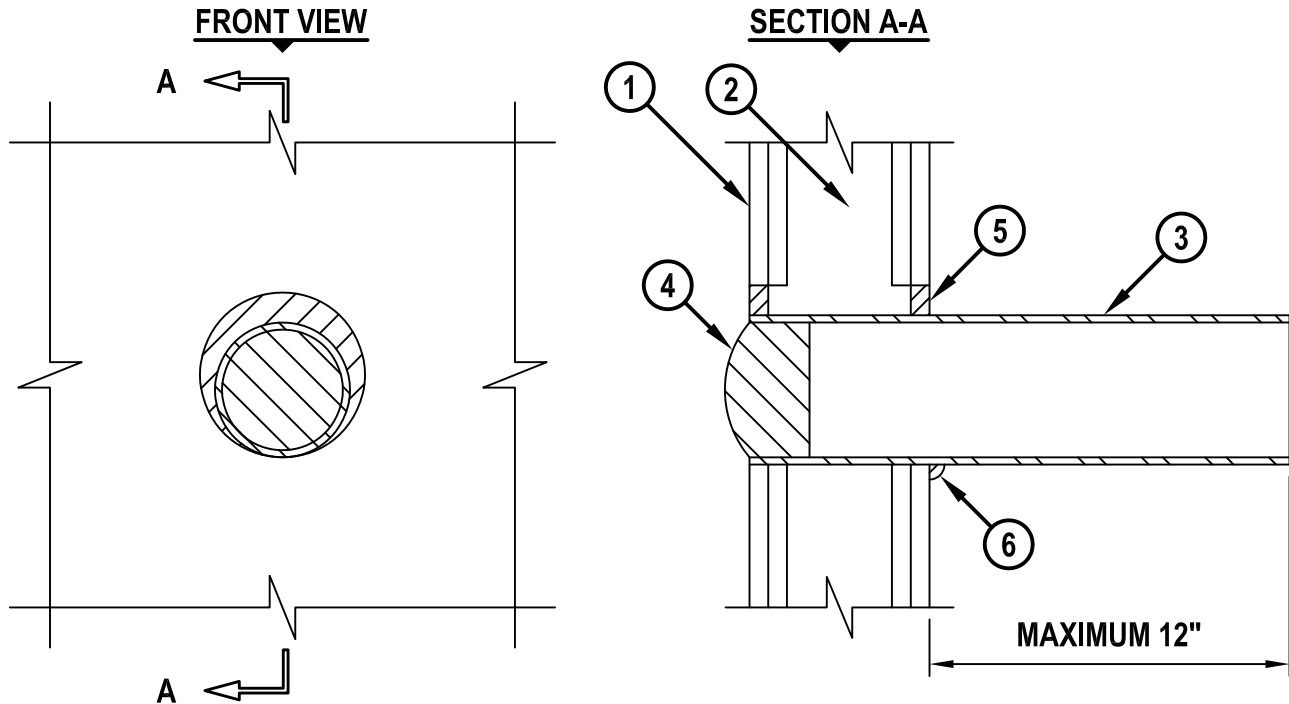
F-RATING = 1-HR. OR 2-HR.

FT-RATING = 0-HR.

FH-RATING = 0-HR.

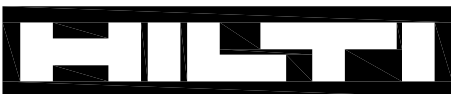
FTH-RATING = 0-HR.

cUL WL0003c.011715



1. GYPSUM WALL ASSEMBLY (UL/cUL CLASSIFIED U300, U400, V400, OR W400 SERIES) (1-HR. OR 2-HR. FIRE-RATING) (2-HR. SHOWN).
2. [NOT SHOWN] WOOD STUDS TO CONSIST OF NOMINAL 2" x 4" LUMBER (SPACED MAXIMUM 16" O/C). STEEL STUDS TO BE MINIMUM 3-1/2" WIDE (SPACED MAXIMUM 24" O/C).
3. MAXIMUM 4" NOMINAL DIAMETER STEEL PIPE SLEEVE (SCHEDULE 5 OR HEAVIER). SLEEVE MAY EXTEND UP TO 12" BEYOND EITHER OR BOTH WALL SURFACE.
4. ONE HILTI CFS-PL FIRESTOP PLUG OR HILTI CP 658T FIRESTOP PLUG INSTALLED TIGHTLY WITHIN SLEEVE SUCH THAT THE OUTER CIRCUMFERENCE OF THE DOME SHAPED PLUG IS FLUSH WITH EITHER END OF SLEEVE.
5. MINIMUM 5/8" DEPTH HILTI FS-ONE MAX OR FS-ONE INTUMESCENT FIRESTOP SEALANT TO BE APPLIED WHEN ANNULAR SPACE EXISTS.
6. MINIMUM 1/2" BEAD HILTI FS-ONE MAX OR FS-ONE INTUMESCENT FIRESTOP SEALANT APPLIED AT SLEEVE/WALL INTERFACE WHEN SLEEVE EXTENDS PAST WALL.

NOTES : 1. MAXIMUM DIAMETER OF OPENING = 5-1/2".
2. ANNULAR SPACE = MINIMUM 0", MAXIMUM 1".


Hilti Firestop Systems

HILTI, Inc.
Tulsa, Oklahoma USA (800) 879-8000

Sheet	1 of 1
Scale	5/32" = 1"
Date	Jan. 17, 2015

Drawing No.

cUL
WL0003c
Saving Lives through Innovation and Education