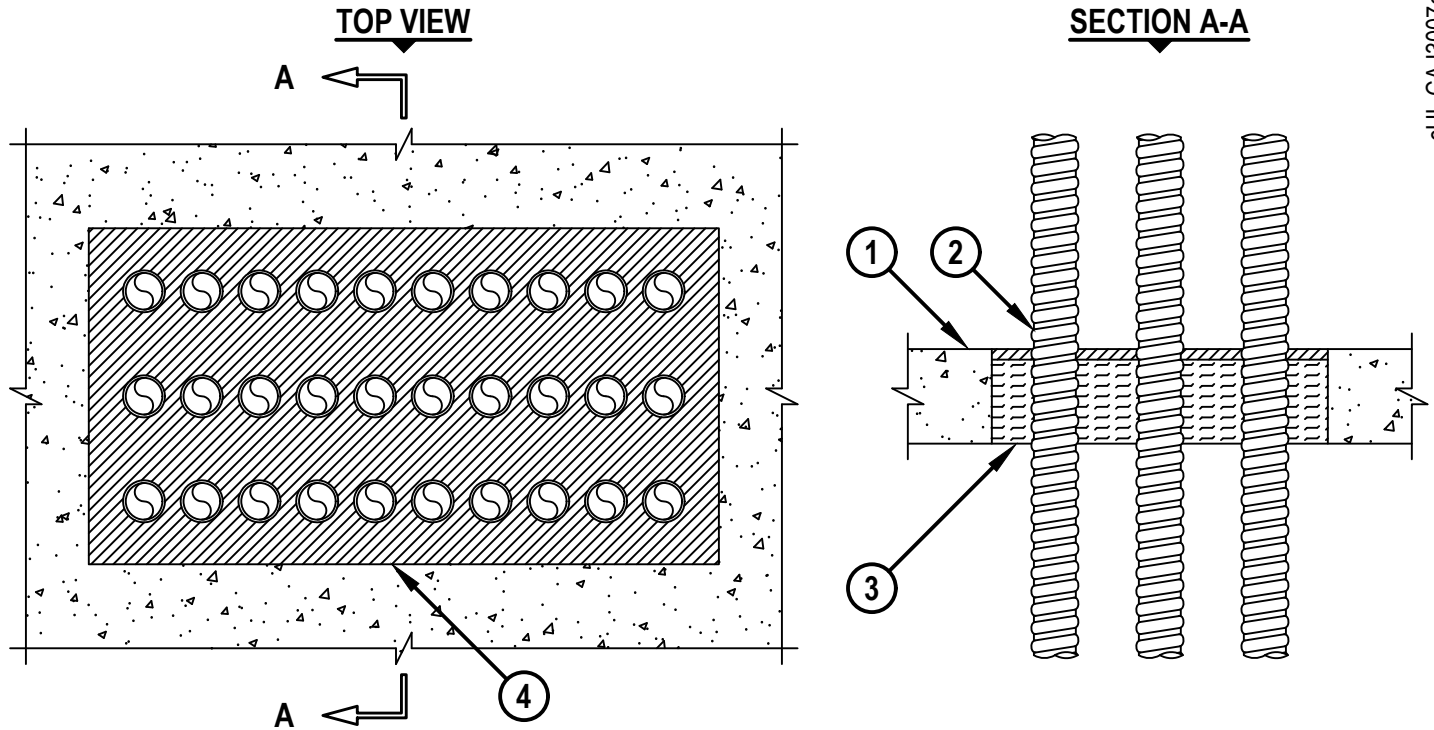


**MULTIPLE CABLES THROUGH CONCRETE FLOOR/WALL OR BLOCK WALL**

F-RATING = 2-HR.  
 FT, FH, AND FTH-RATING = 0-HR.

cUL CAJ3007e.091922



1. CONCRETE FLOOR OR WALL ASSEMBLY (2-HR. FIRE-RATING) :
  - A. LIGHTWEIGHT OR NORMAL WEIGHT CONCRETE FLOOR (MINIMUM 4-1/2" THICK).
  - B. LIGHTWEIGHT OR NORMAL WEIGHT CONCRETE WALL (MINIMUM 5" THICK).
  - C. ANY UL CLASSIFIED CONCRETE BLOCK WALL ASSEMBLY.
2. MAXIMUM 2" NOMINAL DIAMETER METAL-CLAD TEK CABLE WITH PVC JACKET (MAX. QTY. = 30).
3. MAXIMUM 4" THICKNESS MINERAL WOOL (MINIMUM 4 PCF DENSITY) TIGHTLY PACKED.
4. MINIMUM 1/2" DEPTH HILTI FS-ONE MAX INTUMESCENT FIRESTOP SEALANT, HILTI CFS-S SIL GG FIRESTOP SILICONE SEALANT, OR HILTI CFS-S SIL SL FIRESTOP SILICONE SEALANT (FLOOR ONLY).

**NOTES :** 1. MAXIMUM SIZE OF OPENING = 30" x 16".  
 2. ANNULAR SPACE BETWEEN CABLES AND PERIPHERY OF OPENING = MINIMUM 1/2", MAXIMUM 5".  
 3. ANNULAR SPACE BETWEEN CABLES = MINIMUM 1", MAXIMUM 4".  
 4. MINIMUM 1/2" DEPTH HILTI FS-ONE MAX INTUMESCENT FIRESTOP SEALANT OR HILTI CFS-S SIL GG FIRESTOP SILICONE SEALANT IS REQUIRED ON BOTH SIDES OF A WALL ASSEMBLY.

 <b>Hilti Firestop Systems</b>	HILTI, Inc. Plano, Texas USA (800) 879-8000	Sheet 1 of 1	Drawing No. <b>cUL CAJ3007e</b>
		Scale 7/64" = 1"	
		Date Sep. 19, 2022	
<b><i>Saving Lives through Innovation and Education</i></b>			