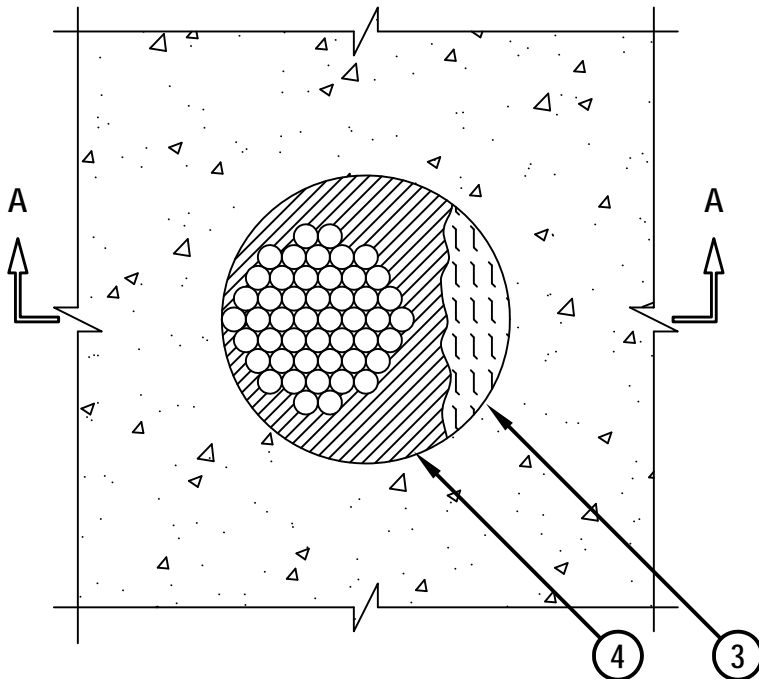


CABLE BUNDLE THROUGH CONCRETE FLOOR ASSEMBLY

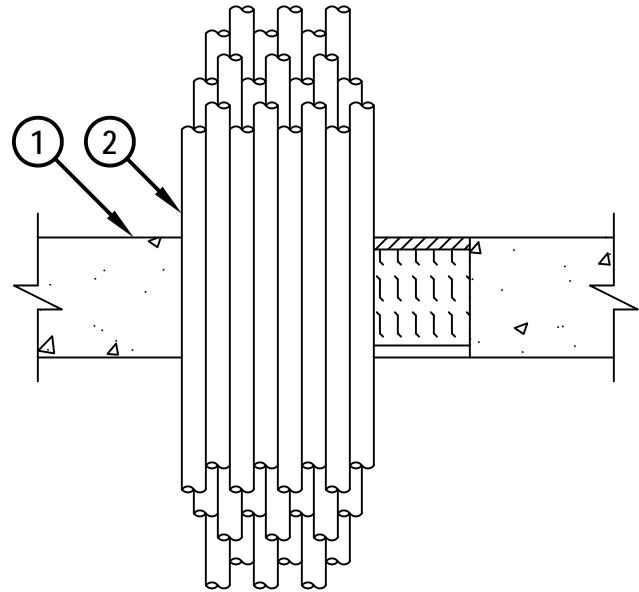
F-RATING = 2-HR.

FT, FH, FTH-RATING = 0-HR.

TOP VIEW



SECTION A-A



1. LIGHTWEIGHT OR NORMAL WEIGHT CONCRETE FLOOR ASSEMBLY (MINIMUM 2-1/2" THICK) (2-HR. FIRE-RATING).
2. SINGLE CABLE OR BUNDLED CABLE CONSISTING OF ANY OF THE FOLLOWING :
 - A. MAXIMUM 300 PAIR NO. 24 AWG TELEPHONE CABLE WITH PVC JACKET.
 - B. MAXIMUM 500 KCMIL POWER CABLE WITH PVC JACKET.
 - C. MAXIMUM 7/C NO. 12 AWG POWER CABLE WITH PVC JACKET.
 - D. MAXIMUM 1/2" DIAMETER FIBER-OPTIC CABLE WITH PVC JACKET.
 - E. MAXIMUM 3/C NO. 12 AWG WITH BARE ALUMINUM GROUND STEEL METAL-CLAD CABLE.
 - F. MAXIMUM 1" DIAMETER METAL CLAD TEK CABLE WITH PVC JACKET.
 - G. MAXIMUM 3/C (+GROUND) 2/0 AWG ALUMINUM CONDUCTOR SER CABLE WITH PVC JACKET.
 - H. MAXIMUM 1/2" NOMINAL DIAMETER RG/U COAXIAL CABLE WITH PVC JACKET.
3. MINIMUM 2" THICKNESS MINERAL WOOL (MIN. 4 PCF DENSITY) TIGHTLY PACKED AND RECESSED TO ACCOMMODATE FIRESTOP SEALANT.
4. MINIMUM 1/4" DEPTH HILTI CP 604 SELF-LEVELING FIRESTOP SEALANT, HILTI CFS-S SIL GG FIRESTOP SILICONE SEALANT, OR HILTI CFS-S SIL SL FIRESTOP SILICONE SEALANT FLUSH WITH TOP SURFACE OF CONCRETE FLOOR ASSEMBLY.

NOTES : 1. MAXIMUM DIAMETER OF OPENING = 6".
 2. ANNULAR SPACE = MINIMUM 0", MAXIMUM 5-3/4".
 3. CABLES TO FILL MAXIMUM 52% OF CROSS-SECTIONAL AREA OF OPENING.



HILTI, Inc.
 Tulsa, Oklahoma USA (800) 879-8000

Sheet	1 of 1
Scale	1/4" = 1"
Date	Jan. 07, 2014

Drawing No.

cUL
 FA3002b

Saving Lives through Innovation and Education