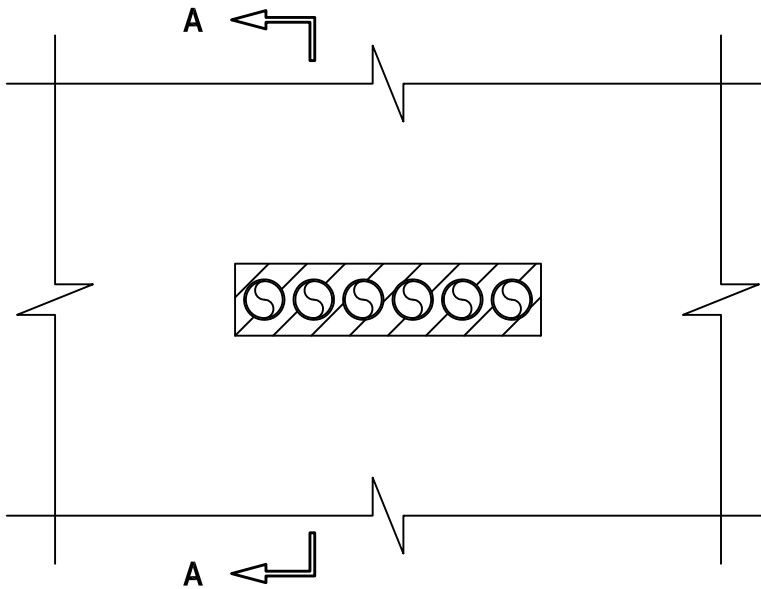


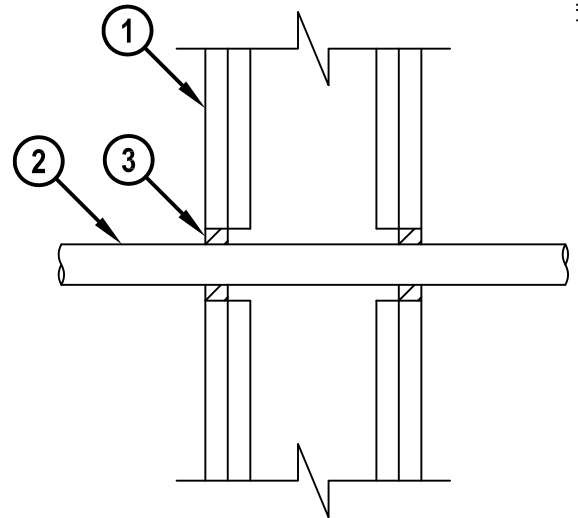
# MULTIPLE PEX TUBING THROUGH GYPSUM WALL ASSEMBLY

F-RATING = 1-HR. OR 2-HR.  
FT, FH, AND FTH-RATINGS = 0-HR.

## FRONT VIEW



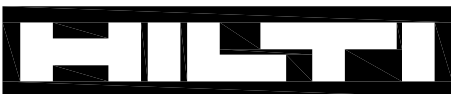
## SECTION A-A



cUL WL2047b.011715

1. GYPSUM WALL ASSEMBLY (UL/cUL CLASSIFIED U400 OR V400 SERIES) (1-HR. OR 2-HR. FIRE-RATING) (2-HR. SHOWN) TO INCLUDE THE FOLLOWING CONSTRUCTION FEATURES :
  - A. [NOT SHOWN] WOOD STUDS TO CONSIST OF NOMINAL 2" x 4" LUMBER (SPACED MAXIMUM 16" OC). STEEL STUDS TO BE MINIMUM 3-1/2" WIDE (SPACED MAXIMUM 24" OC).
  - B. NOMINAL 5/8" THICK GYPSUM WALLBOARD. TYPE, NUMBER OF LAYERS, AND SHEET ORIENTATION AS SPECIFIED IN THE INDIVIDUAL UL DESIGN.
2. MAXIMUM 1" NOMINAL DIAMETER SDR 9 CROSS-LINKED POLYETHYLENE (PEX) TUBING (CLOSED PIPING SYSTEM ONLY) (MAX. QTY. = 6).
3. MINIMUM 5/8" DEPTH HILTI FS-ONE MAX OR FS-ONE INTUMESCENT FIRESTOP SEALANT.

NOTES : 1. MAXIMUM SIZE OF OPENING = 8-1/2" x 2".  
2. ANNULAR SPACE = MINIMUM 1/4", MAXIMUM 1".



**Hilti Firestop Systems**

HILTI, Inc.  
Tulsa, Oklahoma USA (800) 879-8000

|       |               |
|-------|---------------|
| Sheet | 1 of 1        |
| Scale | 3/16" = 1"    |
| Date  | Jan. 17, 2015 |

Drawing No.

**cUL**  
**WL2047b**

*Saving Lives through Innovation and Education*