

PLASTIC PIPE THROUGH CONCRETE FLOOR ASSEMBLY

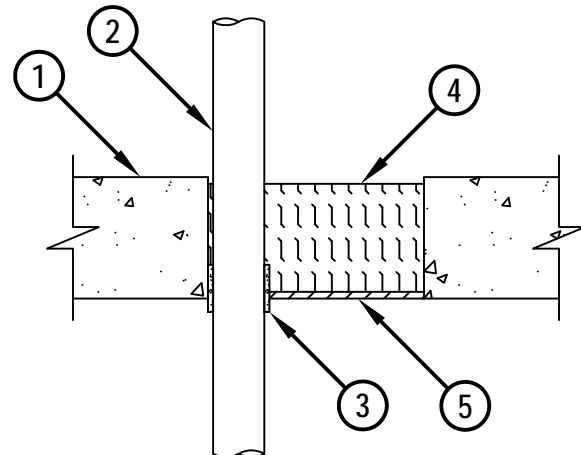
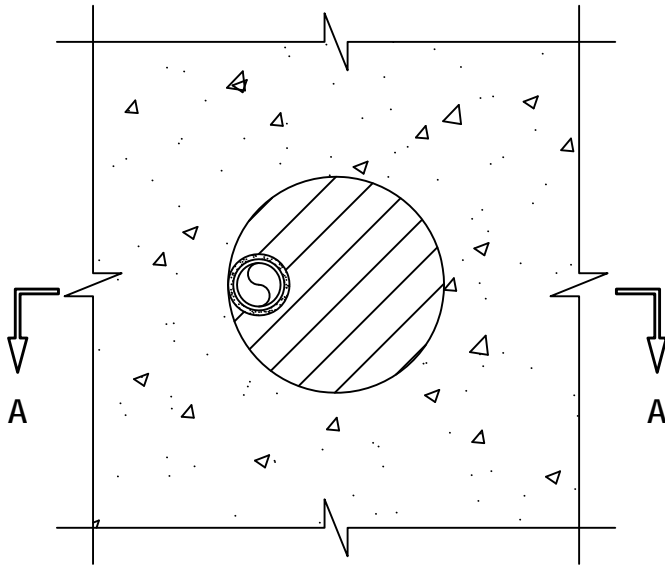
F-RATING = 2-HR.

FT, FH, AND FTH-RATINGS = 0-HR.

NOTE : TESTED WITH A 50 Pa PRESSURE DIFFERENTIAL

BOTTOM VIEW

SECTION A-A



1. CONCRETE FLOOR ASSEMBLY (MINIMUM 4-1/2" THICK) (2-HR. FIRE-RATING).
2. MAXIMUM 1-1/2" NOMINAL DIAMETER XFR PVC PLASTIC PIPE (SCHEDULE 40) (CLOSED OR VENTED PIPING SYSTEM).
3. HILTI CP 648E WRAP STRIP (NOMINAL 3/16" THICK x 1-3/4" WIDE) CONTINUOUSLY WRAPPED AROUND THE OUTER CIRCUMFERENCE OF THE PIPE, COVERING ONE TIME, WITH ENDS BUTTED AND HELD IN PLACE WITH TAPE. BOTTOM EDGE OF WRAP STRIP TO BE POSITIONED 1/2" BELOW THE BOTTOM SURFACE OF CONCRETE FLOOR.
4. MINIMUM 4" THICKNESS MINERAL WOOL (MIN. 4 PCF DENSITY) TIGHTLY PACKED AND RECESSED TO ACCOMMODATE SEALANT.
5. MINIMUM 1/4" DEPTH HILTI CP 601S ELASTOMERIC FIRESTOP SEALANT OR HILTI CFS-S SIL GG FIRESTOP SILICONE SEALANT.

NOTES : 1. MAXIMUM DIAMETER OF OPENING = 8".
 2. ANNULAR SPACE = MINIMUM 3/16", MAXIMUM 5-7/8".

cUL FA2034b.122313

 Hilti Firestop Systems	HILTI, Inc. Tulsa, Oklahoma USA (800) 879-8000	<i>Sheet</i> 1 of 1	<i>Drawing No.</i> cUL FA2034b
		<i>Scale</i> 9/64" = 1"	
		<i>Date</i> Dec. 23, 2013	
Saving Lives through Innovation and Education			