

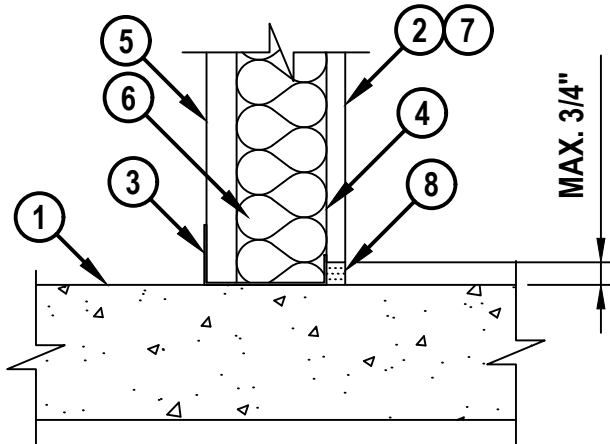
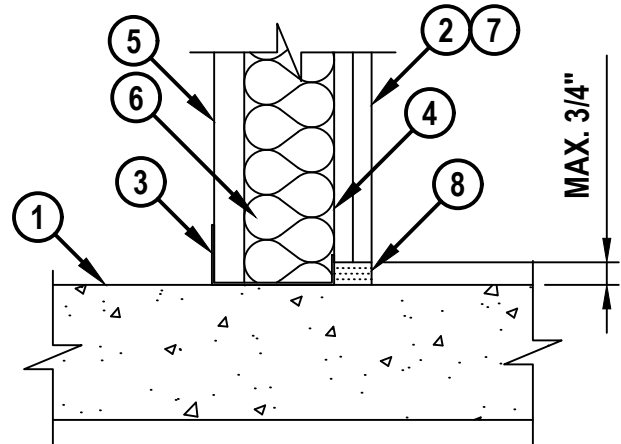
**BOTTOM OF WALL JOINT : GYPSUM SHAFT WALL ASSEMBLY**

ASSEMBLY RATING = 1-HR. OR 2-HR.

L-RATING AT AMBIENT = LESS THAN 1 CFM / LIN FT

L-RATING AT 400°F = LESS THAN 1 CFM / LIN FT

BWS0070c.011626

**CROSS-SECTIONAL VIEW****CONFIGURATION A****CROSS-SECTIONAL VIEW****CONFIGURATION B**

1. CONCRETE FLOOR ASSEMBLY - THE HOURLY FIRE RATING OF THE FLOOR ASSEMBLY SHALL BE EQUAL TO OR GREATER THAN THE HOURLY RATING OF THE WALL ASSEMBLY :
  - A. LIGHTWEIGHT OR NORMAL WEIGHT CONCRETE FLOOR (MINIMUM 4-1/2" THICK).
  - B. ANY UL/cUL CLASSIFIED PRECAST (HOLLOW-CORE) CONCRETE FLOOR (MINIMUM 6" THICK).
  - C. STEEL FLOOR UNIT/FLOOR ASSEMBLY - LIGHTWEIGHT OR NORMAL WEIGHT CONCRETE FLOOR (MINIMUM 2-1/2" THICK) OVER METAL DECKING.
2. GYPSUM SHAFT WALL ASSEMBLY (UL/cUL CLASSIFIED U400, V400, OR W400 SERIES) (1-HR. OR 2-HR. FIRE RATING) (1-HR. SHOWN IN CONFIGURATION A, 2-HR. SHOWN IN CONFIGURATION B).

**Hilti Firestop Systems**

HILTI, Inc.  
Plano, Texas USA (800) 879-8000

Sheet	1 of 2
Scale	5/32" = 1"
Date	Jan. 16, 2026

Drawing No.

**BWS  
0070c**
***Saving Lives through Innovation and Education***

**BOTTOM OF WALL JOINT : GYPSUM SHAFT WALL ASSEMBLY**

ASSEMBLY RATING = 1-HR. OR 2-HR.

L-RATING AT AMBIENT = LESS THAN 1 CFM / LIN FT

L-RATING AT 400°F = LESS THAN 1 CFM / LIN FT

BWS0070c.011626

3. "J" SHAPED FLOOR RUNNER, MINIMUM 4" WIDE WITH LEGS OF 1" AND 2-1/4" (MINIMUM 20 GA.) FASTENED TO THE TOP SIDE OF THE CONCRETE FLOOR ASSEMBLY WITH STEEL FASTENERS AT LOCATIONS NOT GREATER THAN MAX 24" O.C. (SEE NOTE BELOW).
4. "C-H" OR "C-T" SHAPED STUDS (MINIMUM 4" WIDE, MINIMUM 20 GA.) CUT 1/2" TO 3/4" LESS IN LENGTH THAN ASSEMBLY HEIGHT WITH BOTTOM NESTING IN AND RESTING ON FLOOR RUNNER.
5. NOMINAL 1" THICK GYPSUM LINER PANEL. TYPE AND SHEET ORIENTATION AS SPECIFIED IN THE INDIVIDUAL UL/cUL DESIGN.
6. ANY GLASS FIBER INSULATION BEARING THE UL CLASSIFICATION MARKING AS TO FIRE RESISTANCE OR SURFACE BURNING CHARACTERISTICS, OF A WIDTH AND THICKNESS TO COMPLETELY FILL STUD CAVITY. INSULATION BATTS FRICTION FIT TO COMPLETELY FILL ALL STUD CAVITIES.

**CONFIGURATION A (1-HOUR)**

7. NOMINAL 5/8" THICKNESS GYPSUM WALLBOARD AS SPECIFIED IN THE INDIVIDUAL UL DESIGN.
8. HILTI CFS-BTS BOTTOM TRACK SEAL (5/8") SECURED TO STEEL FLOOR RUNNER WITH ADHESIVE BACKING AND RESTING TIGHT TO THE TOP OF THE CONCRETE FLOOR ASSEMBLY PRIOR TO THE INSTALLATION OF GYPSUM BOARD. PRODUCT TO BE COMPRESSED 1/2" AT SEAM LOCATIONS BY COMPRESSING EACH SIDE EVENLY.

**CONFIGURATION B (2-HOUR)**

7. TWO LAYERS OF NOMINAL 5/8" THICKNESS GYPSUM WALLBOARD AS SPECIFIED IN THE INDIVIDUAL UL DESIGN.
8. HILTI CFS-BTS BOTTOM TRACK SEAL (1-1/4") SECURED TO STEEL FLOOR RUNNER WITH ADHESIVE BACKING AND RESTING TIGHT TO THE TOP OF THE CONCRETE FLOOR ASSEMBLY PRIOR TO THE INSTALLATION OF GYPSUM BOARD. PRODUCT TO BE COMPRESSED 1/2" AT SEAM LOCATIONS BY COMPRESSING EACH SIDE EVENLY.

**NOTES : 1. MAXIMUM WIDTH OF JOINT = 3/4".**

**2. AS AN ALTERNATIVE TO THE "J" SHAPED FLOOR RUNNER A MINIMUM 4 IN. (102 MM) WIDE BY 1" OR 1-1/4" (25 OR 32MM) DEEP CHANNEL FORMED FROM MIN 20 MSG GALV. STEEL MAY BE USED.**

**Hilti Firestop Systems**

HILTI, Inc.  
Plano, Texas USA (800) 879-8000

Sheet	2 of 2
Scale	-
Date	Jan. 16, 2026

Drawing No.

**BWS  
0070c**
***Saving Lives through Innovation and Education***