

UL/cUL SYSTEM NO. F-A-1226  
**METAL PIPE THROUGH CONCRETE FLOOR**

F-RATING = 2-HR.

T-RATING = 2-HR.

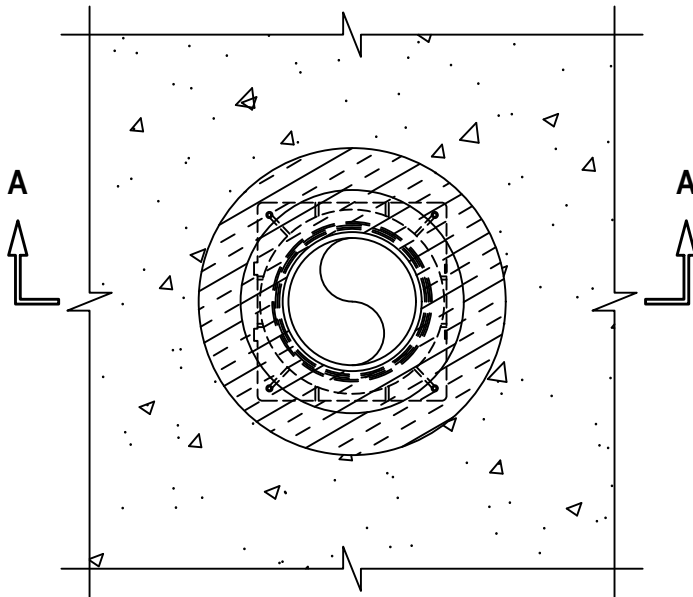
L-RATING AT AMBIENT = LESS THAN 1 CFM / SQ FT

L-RATING AT 400°F = LESS THAN 1 CFM / SQ FT

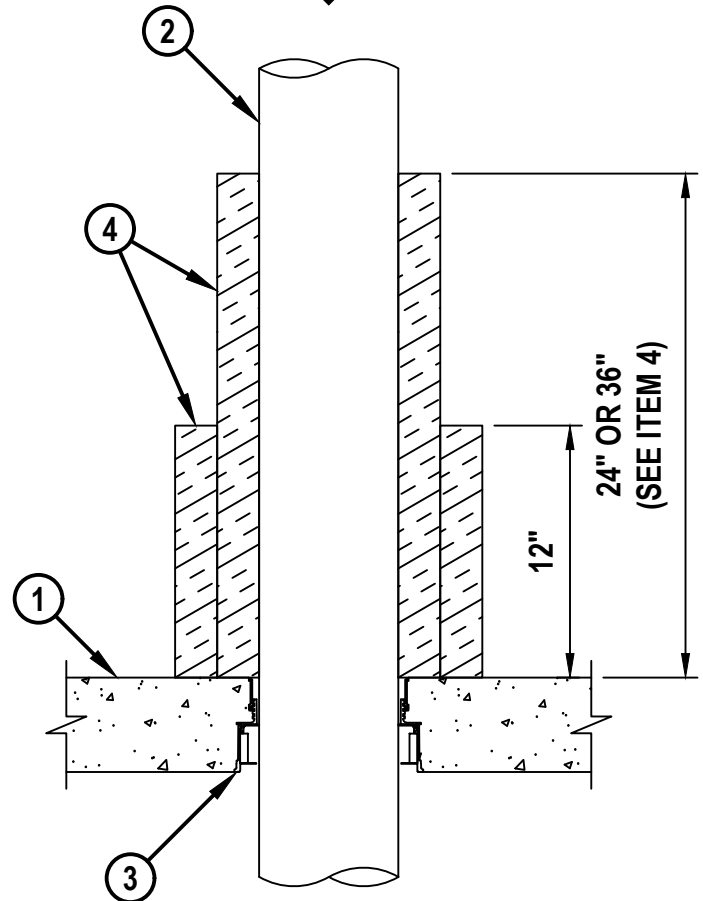
W-RATING = CLASS I

FA1226b.051324

**TOP VIEW**



**SECTION A-A**



HILTI, Inc.  
Plano, Texas USA (800) 879-8000

Sheet	1 of 2
Scale	7/64" = 1"
Date	May 13, 2024

Drawing No.  
**FA  
1226b**

*Saving Lives through Innovation and Education*

UL/cUL SYSTEM NO. F-A-1226  
**METAL PIPE THROUGH CONCRETE FLOOR**

F-RATING = 2-HR.

T-RATING = 2-HR.

L-RATING AT AMBIENT = LESS THAN 1 CFM / SQ FT

L-RATING AT 400°F = LESS THAN 1 CFM / SQ FT

W-RATING = CLASS I

FA1226b.051324

1. LIGHTWEIGHT OR NORMAL WEIGHT CONCRETE FLOOR (MINIMUM 4-1/2" THICK) (2-HR. FIRE-RATING).
2. PENETRATING ITEM TO BE ONE OF THE FOLLOWING :
  - A. MAXIMUM 6" NOMINAL DIAMETER STEEL PIPE (SCHEDULE 40 OR HEAVIER).
  - B. MAXIMUM 6" NOMINAL DIAMETER CAST OR DUCTILE IRON PIPE.
  - C. MAXIMUM 6" NOMINAL DIAMETER STEEL CONDUIT.
  - D. MAXIMUM 4" NOMINAL DIAMETER STEEL EMT.
3. HILTI CFS-CID U [2", 3", 4", OR 6"] OR CFS-CID U 2" CA CAST-IN FIRESTOP DEVICE CAST OR GROUTED INTO CONCRETE FLOOR CUT FLUSH WITH TOP SURFACE OF FLOOR (SIZE OF DEVICE TO EQUAL NOMINAL DIAMETER OF PIPE).
4. DUCT WRAP (NOMINAL 1-1/2" OR 2" THICK FYREWAP 2.0 DUCT INSULATION OR FIREWRAP 1.5 DUCT INSULATION [MANUFACTURED BY UNIFRAX] OR NOMINAL 1-1/2" THICK FIREMASTER FASTWRAP XL DUCT INSULATION [MANUFACTURED BY THERMAL CERAMICS]) WRAPPED AROUND PENETRANT, EXTENDING 24" ABOVE THE FLOOR (FOR PENETRANTS OF NOMINAL 4" DIAMETER OR SMALLER) OR 36" ABOVE THE FLOOR (FOR PENETRANTS GREATER THAN A NOMINAL 4" DIAMETER). AN ADDITIONAL LAYER OF DUCT WRAP TIGHTLY WRAPPED AROUND THE FIRST LAYER OF DUCT WRAP, EXTENDING 12" ABOVE FLOOR. ALL LONGITUDINAL SEAMS AND JOINTS OF DUCT WRAP TO BE SEALED WITH FOIL TAPE.



**Hilti Firestop Systems**

HILTI, Inc.  
Plano, Texas USA (800) 879-8000

Sheet	2 of 2
Scale	-
Date	May 13, 2024

Drawing No.

**FA  
1226b**

***Saving Lives through Innovation and Education***