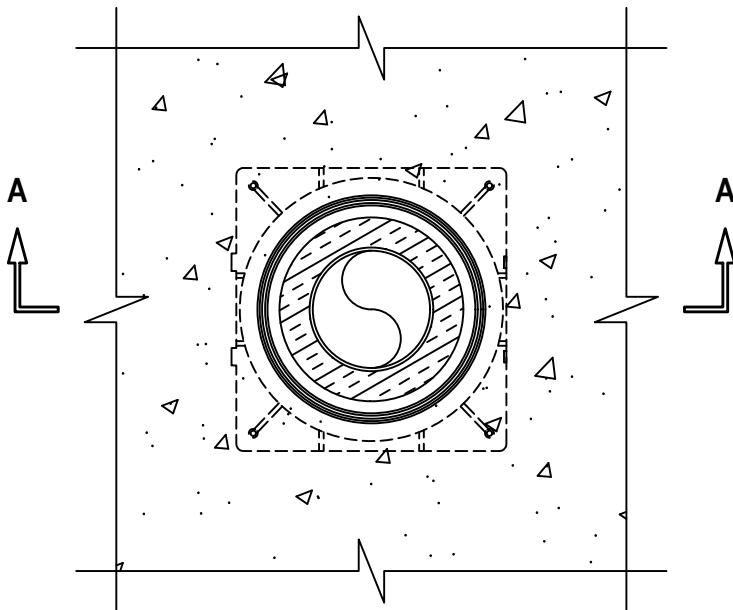
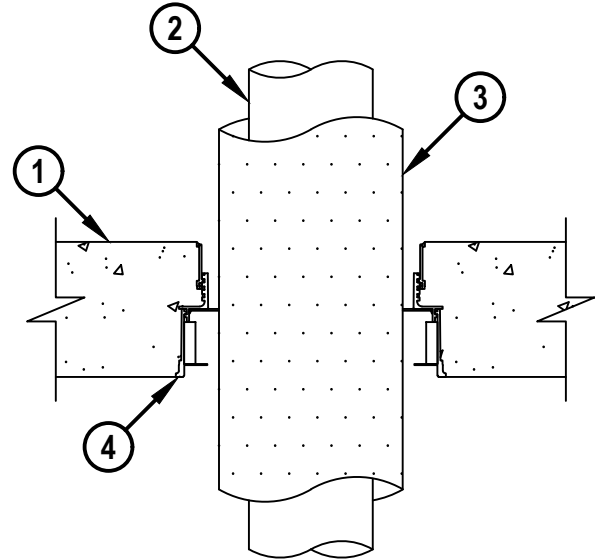


INSULATED PLASTIC PIPE THROUGH CONCRETE FLOOR

F-RATING = 2-HR.

T-RATING = 2-HR.

FA2408a.051624

TOP VIEW**SECTION A-A**

1. LIGHTWEIGHT OR NORMAL WEIGHT CONCRETE FLOOR (MINIMUM 4-1/2" THICK) (2-HR. FIRE-RATING).
2. PENETRATING ITEM TO BE ONE OF THE FOLLOWING :
 - A. MAXIMUM 2" NOMINAL DIAMETER PVC PLASTIC PIPE (SCHEDULE 40) (CELLULAR OR SOLID CORE) (CLOSED OR VENTED PIPING SYSTEM).
 - B. MAXIMUM 2" NOMINAL DIAMETER CPVC PLASTIC PIPE (SDR 13.5) (CLOSED PIPING SYSTEM ONLY).
 - C. MAXIMUM 2" (63 mm OD) NOMINAL DIAMETER GREENPIPE PP-R PLASTIC PIPE (MFD. BY AQUATHERM, INC.) (SDR 7.4) (CLOSED PIPING SYSTEM ONLY).
 - D. MAXIMUM 2" AQUAPEX OR WRISBO HEPEX POLYETHYLENE (PEX) TUBING (BY UPONOR) (SDR 9) (CLOSED PIPING SYSTEM ONLY).
3. NOMINAL 1", 1-1/2", OR 2" THICK GLASS-FIBER PIPE INSULATION (SEE TABLE BELOW).
4. HILTI CFS-CID U [2", 3", 4", OR 6"] OR CFS-CID U 2" CA CAST-IN FIRESTOP DEVICE CAST OR GROUTED INTO CONCRETE FLOOR WITH MAXIMUM 2" EXTENSION ABOVE FLOOR (SEE TABLE BELOW).

TOTAL DIAMETER OF PENETRANT PLUS INSULATION	PRODUCT DESCRIPTION
1-1/4" TO 2"	CFS-CID U 2", CFS-CID U 2" CA
2" TO 3"	CFS-CID U 3"
3" TO 4"	CFS-CID U 4"
5" TO 6"	CFS-CID U 6"

*NOMINAL PIPE DIAMETER WITH TWO TIMES INSULATION THICKNESS WILL DETERMINE WHICH DEVICE SIZE TO USE.

HILTI
Hilti Firestop Systems

HILTI, Inc.
Plano, Texas USA (800) 879-8000

Sheet 1 of 1
Scale 5/32" = 1"
Date May 16, 2024

Drawing No.

FA
2408a

Saving Lives through Innovation and Education