

UL SYSTEM NO. F-A-2409  
**PLASTIC PIPE THROUGH CONCRETE FLOOR**

F-RATING = 2-HR. OR 3-HR.

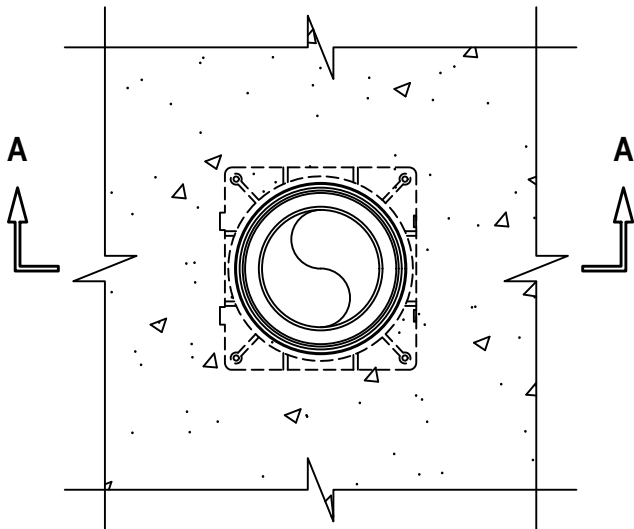
T-RATING = 2-HR. OR 3-HR.

L-RATING AT AMBIENT = 1 CFM / SQ FT (SEE NOTE BELOW)

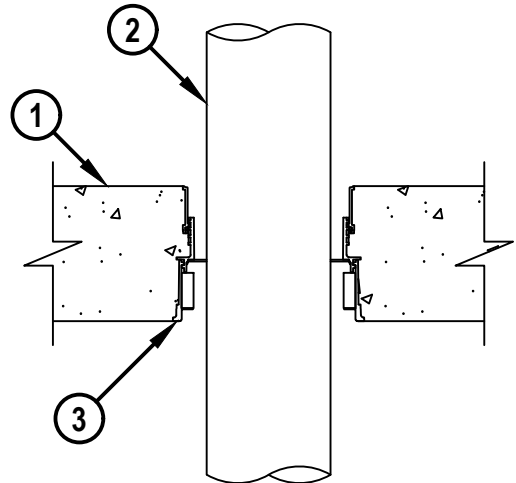
L-RATING AT 400°F = LESS THAN 1 CFM / SQ FT (SEE NOTE BELOW)

FA2409c.060624

**TOP VIEW**



**SECTION A-A**



1. LIGHTWEIGHT OR NORMAL WEIGHT CONCRETE FLOOR (MINIMUM 4-1/2" THICK) (3-HR. FIRE-RATING).
2. MAXIMUM 4" NOMINAL DIAMETER POLYPROPYLENE RANDOM (PP-R) PIPE (SDR 7.4) AQUATHERM GREENPIPE (CLOSED PIPING SYSTEM ONLY).
3. HILTI CFS-CID U [2", 3", OR 4"] OR CFS-CID U 2" CA CAST-IN FIRESTOP DEVICE CAST OR GROUTED INTO CONCRETE FLOOR WITH MAXIMUM 2" EXTENSION ABOVE FLOOR (SEE TABLE BELOW).

NOMINAL PIPE DIAMETER	FIRESTOP DEVICE	F-RATING	T-RATING
1-1/4"	CFS-CID U 2", CFS-CID U 2" CA	2-HR.	2-HR.
1-1/2" TO 2"	CFS-CID U 2", CFS-CID U 2" CA	3-HR.	3-HR.
2" TO 3"	CFS-CID U 3"	3-HR.	3-HR.
3" TO 4"	CFS-CID U 4"	3-HR.	3-HR.

**NOTE : WHEN PIPE DIAMETER IS SMALLER THAN INDICATED ABOVE, MINIMUM 4" THICKNESS MINERAL WOOL (MIN. 4 PCF DENSITY) SHALL BE TIGHTLY PACKED INTO AND FLUSH WITH TOP SURFACE OF DEVICE AND L-RATING NO LONGER APPLIES.**

**HILTI**  
Hilti Firestop Systems

HILTI, Inc.  
Plano, Texas USA (800) 879-8000

Sheet 1 of 1  
Scale 5/32" = 1"  
Date June 06, 2024

Drawing No.  
**FA  
2409c**

*Saving Lives through Innovation and Education*