

UL/cUL SYSTEM NO. F-A-1227  
**METAL PIPE THROUGH CONCRETE FLOOR**

F-RATING = 2-HR.

T-RATING = 1-HR. OR 2-HR. (SEE ITEM 4 BELOW)

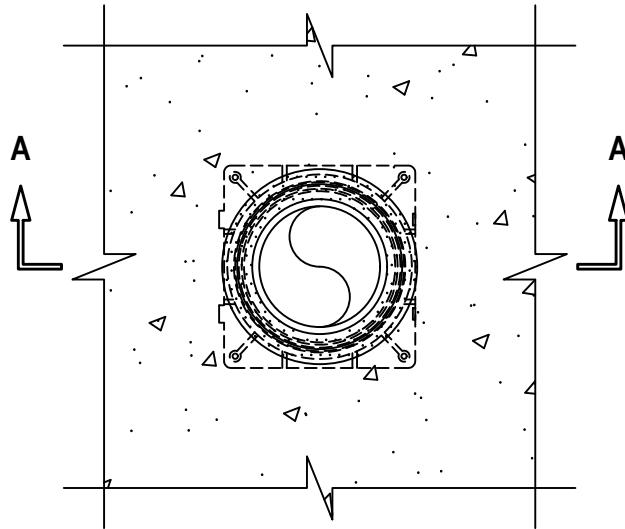
L-RATING AT AMBIENT = LESS THAN 1 CFM / SQ FT

L-RATING AT 400°F = LESS THAN 1 CFM / SQ FT

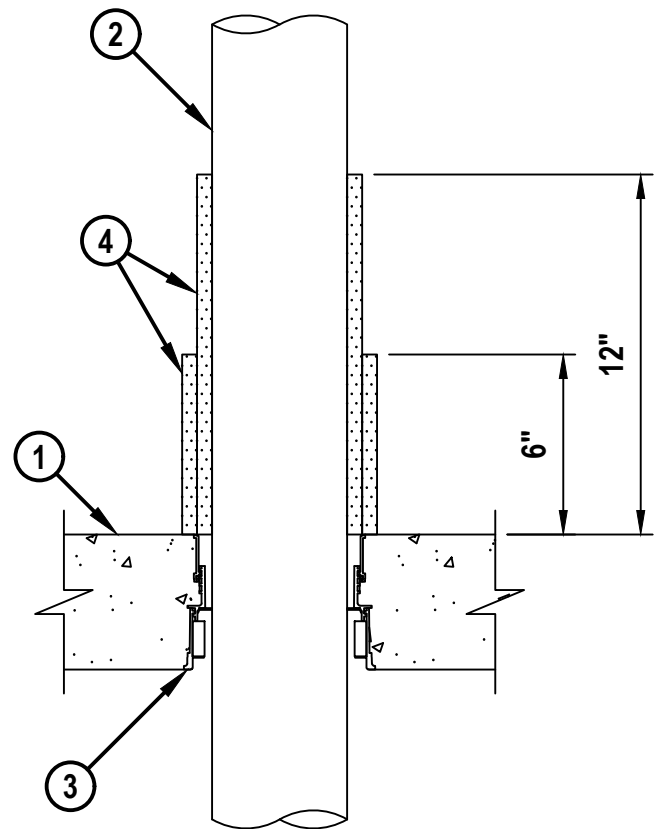
W-RATING = CLASS I

FA1227b.051324

**TOP VIEW**



**SECTION A-A**



HILTI, Inc.  
Plano, Texas USA (800) 879-8000

Sheet	1 of 2
Scale	5/32" = 1"
Date	May 13, 2024

Drawing No.

**FA  
1227b**

*Saving Lives through Innovation and Education*

UL/cUL SYSTEM NO. F-A-1227  
**METAL PIPE THROUGH CONCRETE FLOOR**

F-RATING = 2-HR.  
T-RATING = 1-HR. OR 2-HR. (SEE ITEM 4 BELOW)  
L-RATING AT AMBIENT = LESS THAN 1 CFM / SQ FT  
L-RATING AT 400°F = LESS THAN 1 CFM / SQ FT  
W-RATING = CLASS I

FA1227b.051324

1. LIGHTWEIGHT OR NORMAL WEIGHT CONCRETE FLOOR (MINIMUM 4-1/2" THICK) (2-HR. FIRE RATING).
2. PENETRATING ITEM TO BE ONE OF THE FOLLOWING :
  - A. MAXIMUM 4" NOMINAL DIAMETER STEEL PIPE (SCHEDULE 10 OR HEAVIER).
  - B. MAXIMUM 4" NOMINAL DIAMETER CAST OR DUCTILE IRON PIPE.
  - C. MAXIMUM 4" NOMINAL DIAMETER STEEL CONDUIT OR STEEL EMT.
3. HILTI CFS-CID U [2", 3", OR 4"] OR CFS-CID U 2" CA CAST-IN FIRESTOP DEVICE CAST OR GROUTED INTO CONCRETE FLOOR CUT FLUSH WITH TOP SURFACE OF FLOOR (SIZE OF DEVICE TO EQUAL NOMINAL DIAMETER OF PIPE).
4. ONE LAYER OF HILTI CFP-ES ENDO-SHIELD TIGHTLY WRAPPED AROUND PENETRANT, EXTENDING 12" ABOVE THE FLOOR WITH A 2" OVERLAP AT SEAM. SEAM TO BE SEALED WITH FOIL-SCRIM-KRAFT OR FOIL TAPE. FOR 2-HR. T-RATING, AN ADDITIONAL LAYER OF HILTI CFP-ES ENDO-SHIELD SHALL BE TIGHTLY WRAPPED AROUND FIRST LAYER, EXTENDING 6" ABOVE THE FLOOR WITH A 2" OVERLAP AT SEAM. SEAM TO BE SEALED WITH FOIL-SCRIM-KRAFT OR FOIL TAPE.



**Hilti Firestop Systems**

HILTI, Inc.  
Plano, Texas USA (800) 879-8000

Sheet	2 of 2
Scale	-
Date	May 13, 2024

Drawing No.

**FA  
1227b**

***Saving Lives through Innovation and Education***