

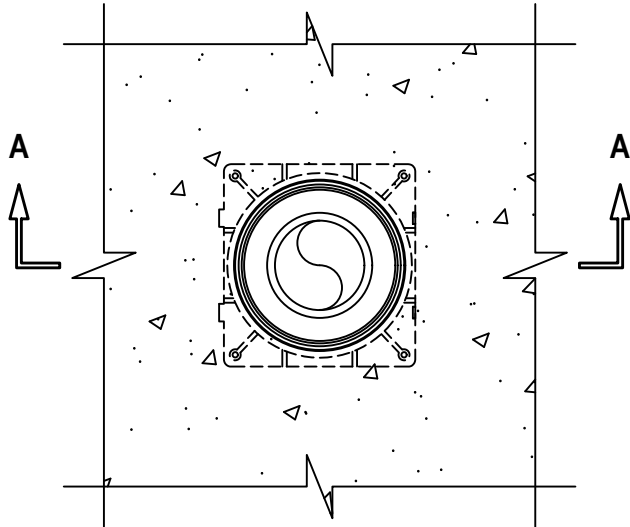
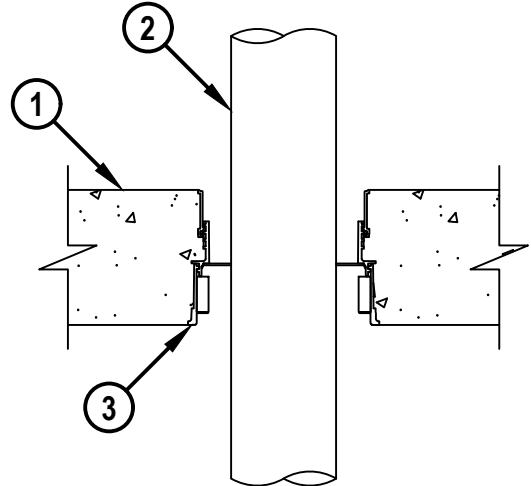
**FLOWGUARD GOLD® OR BLAZEMASTER® PIPE THROUGH CONCRETE FLOOR**

F-RATING = 2-HR. OR 3-HR.

T-RATING = 0-HR.

W-RATING = CLASS I (SEE NOTES NO. 2 AND 3 BELOW)

FA2414b.053124

**TOP VIEW****SECTION A-A**

1. LIGHTWEIGHT OR NORMAL WEIGHT CONCRETE FLOOR (MINIMUM 4-1/2" THICK) (3-HR. FIRE-RATING).
2. PENETRATING ITEM TO BE ONE OF THE FOLLOWING (CLOSED PIPING SYSTEM) (SEE TABLE BELOW) :
  - A. MAXIMUM 2" NOMINAL DIAMETER FLOWGUARD GOLD® CPVC PIPE (SDR 11).
  - B. MAXIMUM 3" NOMINAL DIAMETER BLAZEMASTER® CPVC PIPE (SDR 13.5).
3. HILTI CFS-CID U [2", 3", OR 4"] OR CFS-CID U 2" CA CAST-IN DEVICE CAST OR GROUTED INTO CONCRETE FLOOR (SEE TABLE BELOW).

NOMINAL PIPE DIAMETER	PRODUCT DESCRIPTION	MAXIMUM EXTENSION OF DEVICE ABOVE FLOOR	F-RATING
1-1/4"	CFS-CID U 2", CFS-CID U 2" CA	NOT RESTRICTED	2-HR.
1-1/2" TO 2"	CFS-CID U 2", CFS-CID U 2" CA	NOT RESTRICTED	3-HR.
2" TO 3"	CFS-CID U 3"	2"	3-HR.
3"	CFS-CID U 4"	2"	3-HR.

- NOTES :** 1. WHEN PIPE SIZE IS LESS THAN DEVICE SIZE, MINIMUM 4" THICKNESS MINERAL WOOL (MIN. 4 PCF DENSITY) SHALL BE BE TIGHTLY PACKED INTO HILTI CFS-CID U OR CFS-CID U CA, FLUSH WITH TOP SURFACE OF DEVICE.
2. W-RATING APPLIES TO PIPE DIAMETERS AND FIRESTOP DEVICES AS LISTED IN TABLE ABOVE.
3. WHEN W-RATING IS REQUIRED - WHEN NOMINAL PIPE DIAMETER MATCHES DEVICE SIZE, PIPE MAY BE INSTALLED IN ANY ORIENTATION. WHEN NOMINAL SIZE IS SMALLER THAN DEVICE SIZE, PIPE MUST BE INSTALLED FROM THE BOTTOM.

**Hilti Firestop Systems**HILTI, Inc.  
Plano, Texas USA (800) 879-8000

Sheet 1 of 1

Scale 5/32" = 1"

Date May 31, 2024

Drawing No.

**FA  
2414b***Saving Lives through Innovation and Education*