

**PLASTIC PIPE THROUGH CONCRETE FLOOR**

F-RATING = 2-HR.

FT-RATING = 1/4-HR. OR 2-HR. (SEE TABLE BELOW)

FH-RATING = 2-HR.

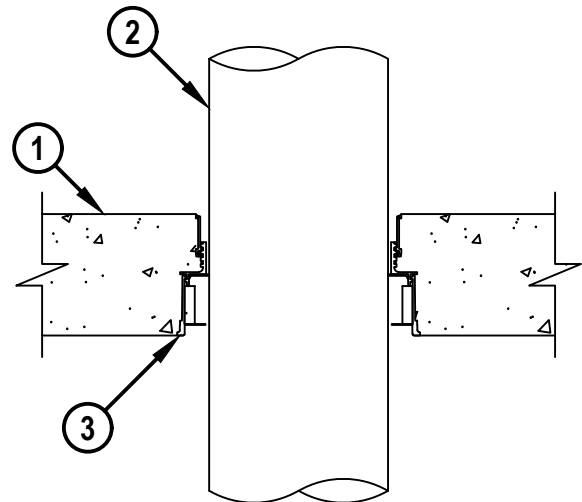
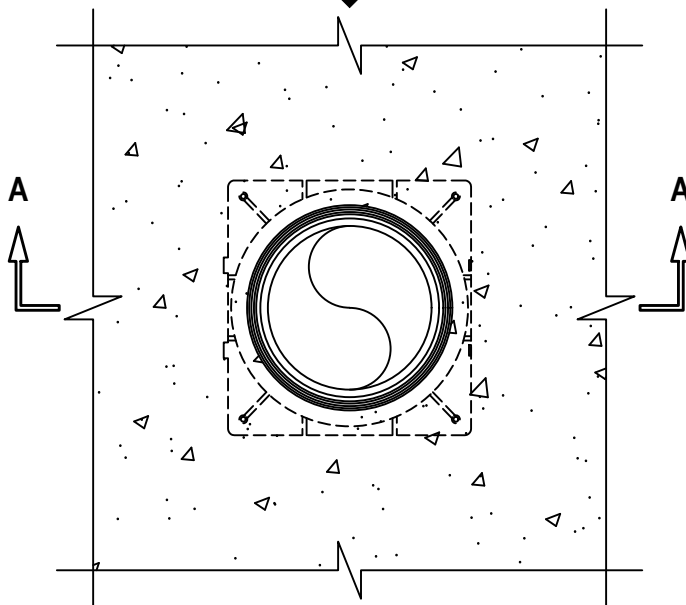
FTH-RATING = 1/4-HR. OR 2-HR. (SEE TABLE BELOW)

L-RATING AT AMBIENT = LESS THAN 1 CFM / SQ FT

L-RATING AT 400°F - LESS THAN 1 CFM / SQ FT

NOTE : TESTED WITH A 50 Pa PRESSURE DIFFERENTIAL

cUL FA2418b.052124

**TOP VIEW****SECTION A-A**

**PLASTIC PIPE THROUGH CONCRETE FLOOR**

F-RATING = 2-HR.

FT-RATING = 1/4-HR. OR 2-HR. (SEE TABLE BELOW)

FH-RATING = 2-HR.

FTH-RATING = 1/4-HR. OR 2-HR. (SEE TABLE BELOW)

L-RATING AT AMBIENT = LESS THAN 1 CFM / SQ FT

L-RATING AT 400°F - LESS THAN 1 CFM / SQ FT

NOTE : TESTED WITH A 50 Pa PRESSURE DIFFERENTIAL

cUL FA2418b.052124

1. LIGHTWEIGHT OR NORMAL WEIGHT CONCRETE FLOOR (MINIMUM 4-1/2" THICK) (2-HR. FIRE-RATING).
2. PENETRATING ITEM TO BE ONE OF THE FOLLOWING (SEE TABLE BELOW) :
  - A. MAXIMUM 6" NOMINAL DIAMETER XFR-PVC PLASTIC PIPE (SCHEDULE 40) (CLOSED OR VENTED PIPING SYSTEM).
  - B. MAXIMUM 6" NOMINAL DIAMETER NAPSYS-HR PVC PLASTIC PIPE (SCHEDULE 40) (CLOSED OR VENTED PIPING SYSTEM).
3. HILTI CFS-CID U 2" CA OR CFS-CID U [3", 4", OR 6"] CAST-IN FIRESTOP DEVICE CAST OR GROUTED INTO CONCRETE FLOOR (SEE TABLE BELOW).

NOMINAL PENETRANT DIAMETER	FIRESTOP DEVICE	F AND FH RATING, HR.	FT AND FTH RATING, HR.
1-1/2" (ITEM 2A)	CFS-CID U 2" CA	2	1/4
2" (ITEM 2A, 2B)	CFS-CID U 2" CA	2	2
3" (ITEM 2A)	CFS-CID U 3"	2	2
3" (ITEM 2B)	CFS-CID U 3"	2	1/4
4" (ITEM 2A)	CFS-CID U 4"	2	1/4
4" (ITEM 2B)	CFS-CID U 4"	2	2
6" (ITEM 2A, 2B)	CFS-CID U 6"	2	2

**Hilti Firestop Systems**
 HILTI, Inc.  
 Plano, Texas USA (800) 879-8000

Sheet 2 of 2

Scale -

Date May 21, 2024

Drawing No.

**cUL**  
**FA2418b**
***Saving Lives through Innovation and Education***