

cUL SYSTEM NO. F-A-3090

## CABLE BUNDLE THROUGH CONCRETE FLOOR

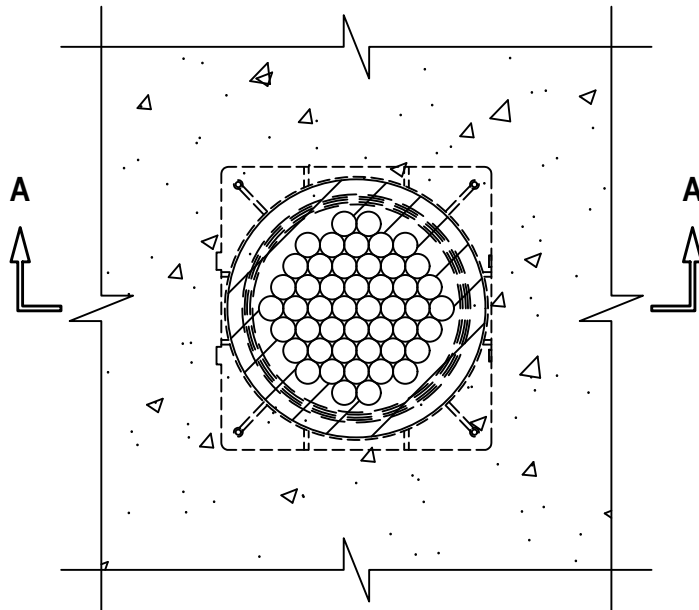
F-RATING = 3-HR.

FT, FH, AND FTH-RATINGS = 0-HR.

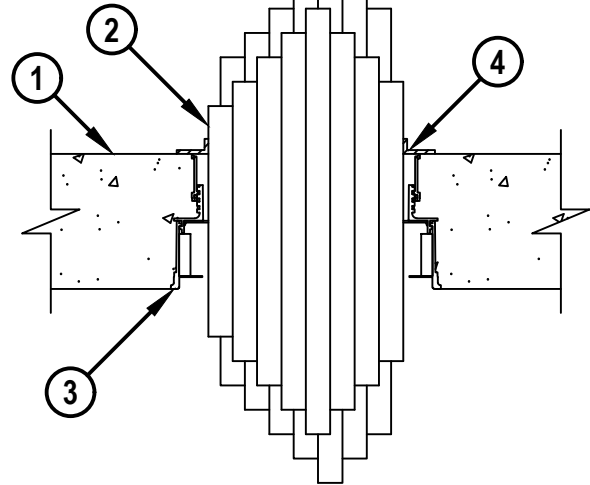


cUL FA3090a.092623

TOP VIEW



SECTION A-A



HILTI, Inc.  
Plano, Texas USA (800) 879-8000

Sheet	1 of 2
Scale	5/32" = 1"
Date	Sep. 26, 2023

Drawing No.

**cUL**  
**FA3090a**

*Saving Lives through Innovation and Education*

**CABLE BUNDLE THROUGH CONCRETE FLOOR**

F-RATING = 3-HR.

FT, FH, AND FTH-RATINGS = 0-HR.

cUL FA3090a.092623

1. LIGHTWEIGHT OR NORMAL WEIGHT CONCRETE FLOOR (MINIMUM 4-1/2" THICK) (3-HR. FIRE RATING).
2. BUNDLED CABLE CONSISTING OF ANY OF THE FOLLOWING :
  - A. MAXIMUM 300 PAIR NO. 24 AWG TELEPHONE CABLE WITH PVC JACKET.
  - B. MAXIMUM 500 KCMIL POWER CABLE WITH PVC JACKET.
  - C. MAXIMUM 7/C NO. 12 AWG POWER CABLE WITH PVC JACKET.
  - D. MAXIMUM 1/2" DIAMETER FIBER-OPTIC CABLE (MAXIMUM 24 FIBER).
  - E. MAXIMUM 3/C NO. 12 AWG METAL-CLAD CABLE.
3. HILTI CFS-CID U [3", 4", OR 6"] OR CFS-CID U 2" CA CAST-IN FIRESTOP DEVICE CAST OR GROUTED INTO CONCRETE FLOOR WITH A MAXIMUM 2" EXTENSION ABOVE FLOOR (SEE TABLE BELOW).
4. HILTI CP 617 FIRESTOP PUTTY PAD APPLIED AT TOP SURFACE OF DEVICE, OVERLAPPING ONTO CABLES AND DEVICE OR FLOOR.

DIAMETER OF CABLE BUNDLE MM (IN.)	PRODUCT DESCRIPTION
25 (1) TO 51 (2)	CFS-CID U 2" CA
51 (2) TO 76 (3)	CFS-CID U 3"
76 (3) TO 114 (4-1/2)	CFS-CID U 4"
165 (6-1/2)	CFS-CID U 6"

**NOTE : AS AN ALTERNATIVE TO CP 617 (ITEM 4) A MINIMUM 1/8" DEPTH OF HILTI CP 618 FIRESTOP PUTTY STICK MAY BE INSTALLED OVERLAPPING ONTO CABLE AND FIRESTOP DEVICE OR FLOOR.**

**Hilti Firestop Systems**

HILTI, Inc.  
Plano, Texas USA (800) 879-8000

Sheet 2 of 2

Scale -

Date Sep. 26, 2023

Drawing No.

**cUL**  
**FA3090a**
***Saving Lives through Innovation and Education***