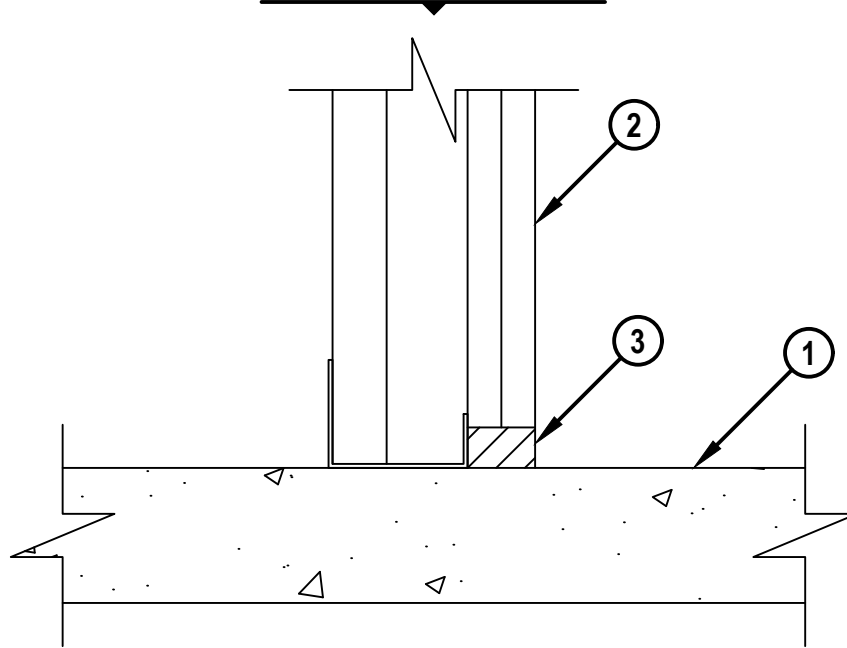


BOTTOM OF WALL JOINT : GYPSUM SHAFT WALL ASSEMBLY

ASSEMBLY RATING = 1-HR. OR 2-HR.

L-RATING AT AMBIENT = LESS THAN 1.65 CFM / LIN FT

L-RATING AT 400°F = LESS THAN 1.33 CFM / LIN FT

CROSS-SECTIONAL VIEW

1. LIGHTWEIGHT OR NORMAL WEIGHT CONCRETE FLOOR ASSEMBLY (MINIMUM 2-1/2" THICK) (1-HR. OR 2-HR. FIRE-RATING).
2. GYPSUM SHAFT WALL ASSEMBLY (UL/cUL CLASSIFIED U400 OR V400 SERIES) (1-HR. OR 2-HR. FIRE-RATING) (2-HR. SHOWN) TO INCLUDE THE FOLLOWING CONSTRUCTION FEATURES :
 - A. "J" SHAPED CEILING RUNNER, MINIMUM 2-1/2" WIDE WITH LEGS OF 1-1/4" AND 2" (MINIMUM 24 GA.) FASTENED TO TOP SIDE OF CONCRETE FLOOR WITH STEEL FASTENERS AT LOCATION NOT GREATER THAN 2" FROM ENDS AND MAXIMUM 24" O.C.
 - B. "C-H" OR "C-T" SHAPED STUDS (MINIMUM 2-1/2" WIDE, MINIMUM 25 GA.) CUT 3/8" TO 1/2" LESS IN LENGTH THAN ASSEMBLY HEIGHT.
 - C. NOMINAL 1" THICK GYPSUM LINER PANEL. TYPE AND SHEET ORIENTATION AS SPECIFIED IN THE INDIVIDUAL UL/cUL DESIGN.
 - D. NOMINAL 1/2" OR 5/8" THICK GYPSUM WALLBOARD. TYPE, NUMBER OF LAYERS, AND SHEET ORIENTATION AS SPECIFIED IN THE INDIVIDUAL UL/cUL DESIGN.
3. HILTI CP 606 FLEXIBLE FIRESTOP SEALANT, HILTI CFS-S SIL GG FIRESTOP SILICONE SEALANT, OR HILTI CP 605 BOTTOM OF WALL FIRESTOP SEALANT INSTALLED THE FULL DEPTH OF GYPSUM BOARD AND FLUSH WITH THE FINISH SIDE OF WALL (SEE NOTES NO. 1 AND 2 BELOW).

NOTES : 1. MAXIMUM WIDTH OF JOINT [FOR HILTI CP 606] = 1".

2. MAXIMUM WIDTH OF JOINT [FOR HILTI CFS-S SIL GG OR CP 605] = 3/4".

**Hilti Firestop Systems**HILTI, Inc.
Plano, Texas USA (800) 879-8000

Sheet	1 of 1
Scale	9/32" = 1"
Date	Jan. 16, 2026

Drawing No.

**BWS
0023e***Saving Lives through Innovation and Education*