

CABLE BUNDLE THROUGH CONCRETE FLOOR/WALL OR BLOCK WALL ASSEMBLY

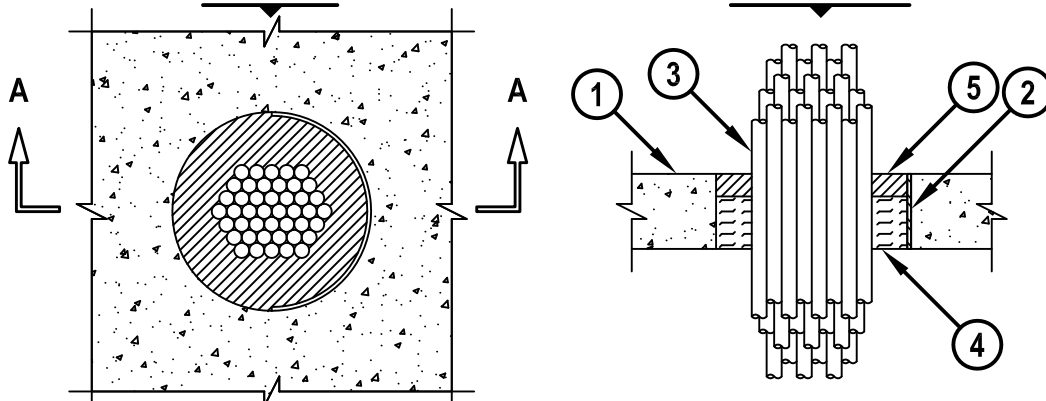
F-RATING = 3-HR.

T-RATING = 0-HR, 1/2-HR, & 3/4-HR.

(SEE UL FIRE RESISTANCE DIRECTORY VOL. 2)

TOP VIEW

SECTION A-A



CAJ3095r.010515

1. CONCRETE FLOOR OR WALL ASSEMBLY (3-HR. FIRE-RATING) :
 - A. LIGHTWEIGHT OR NORMAL WEIGHT CONCRETE FLOOR (MINIMUM 2-1/2" THICK).
 - B. LIGHTWEIGHT OR NORMAL WEIGHT CONCRETE WALL (MINIMUM 3" THICK).
 - C. ANY UL/cUL CLASSIFIED CONCRETE BLOCK WALL.
2. [OPTIONAL] MAXIMUM 6" NOMINAL DIAMETER STEEL PIPE SLEEVE (SCHEDULE 10 OR HEAVIER) MAY EXTEND MAXIMUM 3" ABOVE FLOOR, OR BOTH SURFACES OF WALL.
3. CABLE BUNDLE TO BE A COMBINATION OF ANY OF THE FOLLOWING :
 - A. MAXIMUM 300 PAIR NO. 24 AWG TELEPHONE CABLE WITH PVC JACKET.
 - B. MAXIMUM 500 KCMIL POWER CABLE WITH PVC JACKET (COPPER CONDUCTOR).
 - C. MAXIMUM 350 KCMIL POWER CABLE WITH PVC JACKET (ALUMINUM OR COPPER CONDUCTOR).
 - D. MAXIMUM 7/C NO. 12 AWG POWER CABLE WITH PVC JACKET.
 - E. MAXIMUM 1/2" DIAMETER FIBER-OPTIC CABLE (24 FIBER).
 - F. MAXIMUM 3/C NO. 12 AWG METAL-CLAD CABLE.
 - G. MAXIMUM 3/C (+GROUND) 2/0 AWG COPPER CONDUCTOR SER CABLE WITH PVC JACKET.
 - H. MAXIMUM RG/U COAXIAL CABLE WITH FLUORINATED ETHYLENE JACKET.
 - I. MAXIMUM 3/C NO. 6 AWG CABLE WITH PVC JACKET.
 - J. MAXIMUM 1-1/4" DIAMETER SINGLE OR MULTIPLE CONDUCTOR TYPE MI CABLE (SEE NOTE NO. 4 BELOW).
 - K. ANY CABLES, METAL-CLAD CABLES, OR ARMORED CABLES CURRENTLY LISTED UNDER THE THROUGH PENETRATING PRODUCTS CATEGORY.
4. MINIMUM 2" THICKNESS MINERAL WOOL (MIN. 4 PCF DENSITY) TIGHTLY PACKED.
5. MINIMUM 1/2" DEPTH HILTI FS-ONE MAX OR FS-ONE INTUMESCENT FIRESTOP SEALANT.

NOTES : 1. MAXIMUM DIAMETER OF OPENING = 6".
 2. CABLES TO FILL MINIMUM 25%, TO MAXIMUM 45% OF CROSS-SECTIONAL AREA OF OPENING.
 3. MINIMUM 1/2" DEPTH HILTI FS-ONE MAX OR FS-ONE INTUMESCENT FIRESTOP SEALANT IS REQUIRED ON BOTH SIDES OF A WALL.
 4. A MINIMUM 1/8" SEPARATION SHOULD BE MAINTAINED BETWEEN MI CABLES AND ANY OTHER TYPES OF CABLE.



HILTI, Inc.
 Tulsa, Oklahoma USA (800) 879-8000

Sheet	1 of 1
Scale	5/32" = 1"
Date	Jan. 05, 2015

Drawing No.

**CAJ
3095r**