

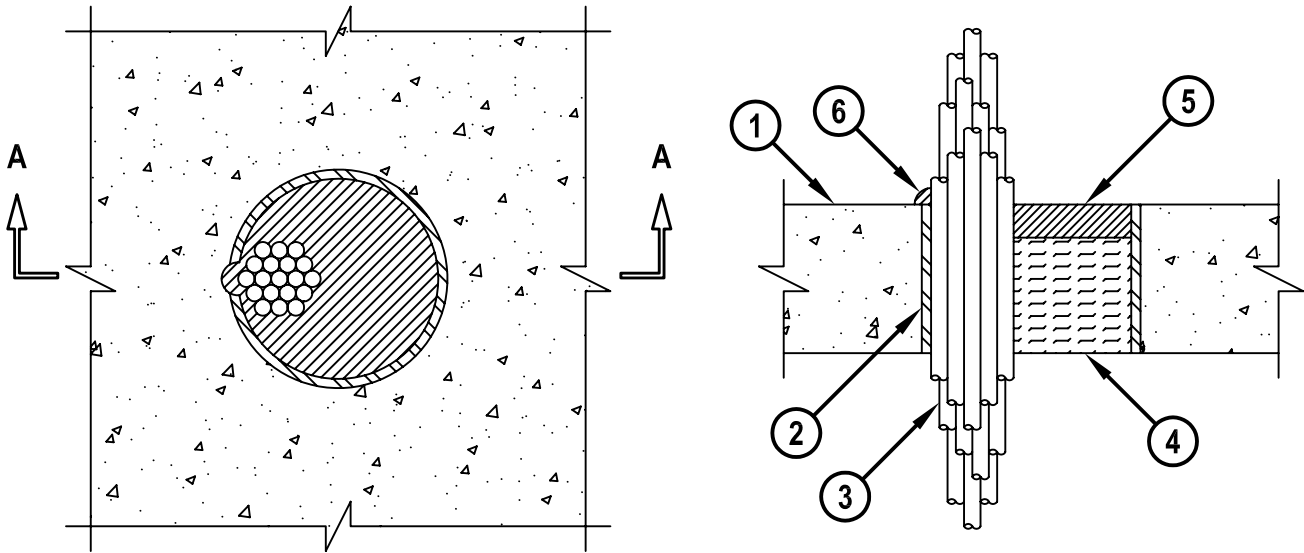
CABLE BUNDLE THROUGH CONCRETE FLOOR/WALL OR BLOCK WALL

F-RATING = 3-HR.
T-RATING = 0-HR.

CAJ3208b.012003

TOP VIEW

SECTION A-A



1. CONCRETE FLOOR OR WALL ASSEMBLY (3-HR. FIRE-RATING) :
 - A. LIGHTWEIGHT OR NORMAL WEIGHT CONCRETE FLOOR OR WALL (MIN. 4-1/2" THICK).
 - B. ANY UL/ULC CLASSIFIED CONCRETE BLOCK WALL.
2. OPTIONAL : MAXIMUM 6" NOMINAL DIAMETER STEEL OR PVC PLASTIC PIPE SLEEVE (SCHEDULE 40 OR HEAVIER).
3. CABLE BUNDLE TO BE A COMBINATION OF ANY OF THE FOLLOWING :
 - A. MAXIMUM 300 PAIR NO. 24 AWG TELEPHONE CABLE WITH PVC JACKET.
 - B. MAXIMUM 750 KCMIL POWER CABLE WITH PVC JACKET.
 - C. MAXIMUM 7/C NO. 12 AWG POWER CABLE WITH PVC JACKET.
 - D. MAXIMUM 1/2" DIAMETER FIBER-OPTIC CABLE (24 FIBER).
 - E. MAXIMUM 3/C NO. 12 AWG METAL-CLAD CABLE WITH PVC JACKET.
 - F. MAXIMUM 1" DIAMETER METAL-CLAD TEK CABLE WITH PVC JACKET.
 - G. MAXIMUM 3/C (+GROUND) 2/0 AWG COPPER SER CABLE WITH PVC JACKET.
 - H. TYPE RG/U COAXIAL CABLE.
4. MINIMUM 3-1/2" THICKNESS MINERAL WOOL (MIN. 4 PCF DENSITY) TIGHTLY PACKED.
5. MINIMUM 1" DEPTH HILTI CP 618 FIRESTOP PUTTY STICK.
6. MINIMUM 1/2" BEAD HILTI CP 618 FIRESTOP PUTTY STICK AT POINT OF CONTACT.

NOTES : 1. MAXIMUM DIAMETER OF OPENING = 6".
 2. ANNULAR SPACE = MINIMUM 0", MAXIMUM 1".
 3. CABLES TO FILL MAXIMUM 60% OF CROSS-SECTIONAL AREA OF OPENING.
 4. MINIMUM 1" DEPTH HILTI CP 618 FLEXIBLE FIRESTOP PUTTY STICK IS REQUIRED ON BOTH SIDES OF A WALL ASSEMBLY.



HILTI, Inc.
Tulsa, Oklahoma USA (918) 252-6000

Sheet	1 of 1
Scale	11/64" = 1"
Date	Jan. 20, 2003

Drawing No.
**CAJ
3208b**