

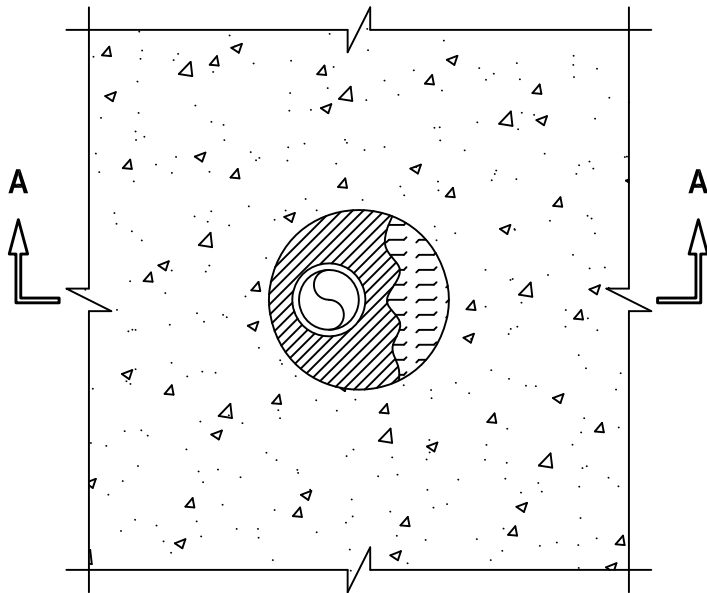
FLEXIBLE STEEL CONDUIT THROUGH CONCRETE FLOOR OVER METAL DECK

F-RATING = 2-HR.

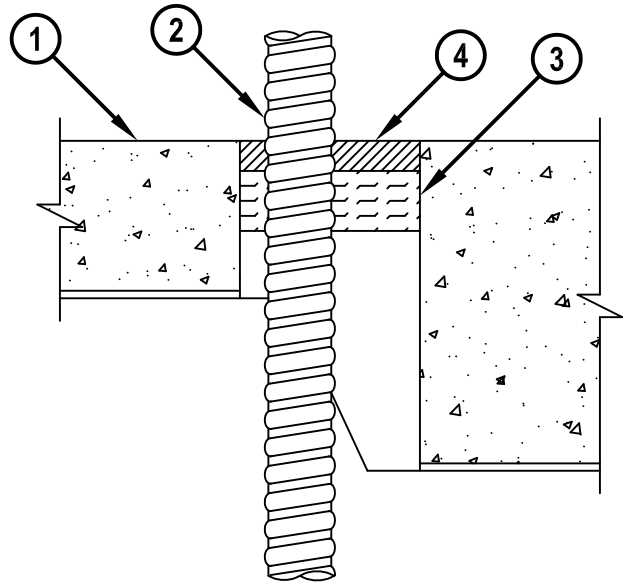
T-RATING = 0-HR.

FA1018d.010715

TOP VIEW



SECTION A-A



1. LIGHTWEIGHT OR NORMAL WEIGHT CONCRETE FLOOR (MINIMUM 2-1/2" THICK) OVER METAL DECK ASSEMBLY (2-HR. FIRE-RATING).
2. MAXIMUM 1" NOMINAL DIAMETER FLEXIBLE STEEL CONDUIT.
3. MINIMUM 1" THICKNESS MINERAL WOOL (MINIMUM 4 PCF DENSITY) TIGHTLY PACKED AND RECESSED TO ACCOMMODATE FIRESTOP SEALANT.
4. MINIMUM 1/2" DEPTH HILTI FS-ONE MAX OR FS-ONE INTUMESCENT FIRESTOP SEALANT.

NOTES : 1. MAXIMUM DIAMETER OF OPENING = 3".
 2. ANNULAR SPACE = MINIMUM 1/2", MAXIMUM 1-1/4".



HILTI, Inc.
 Tulsa, Oklahoma USA (800) 879-8000

Sheet	1 of 1
Scale	5/16" = 1"
Date	Jan. 07, 2015

Drawing No.
**FA
 1018d**