

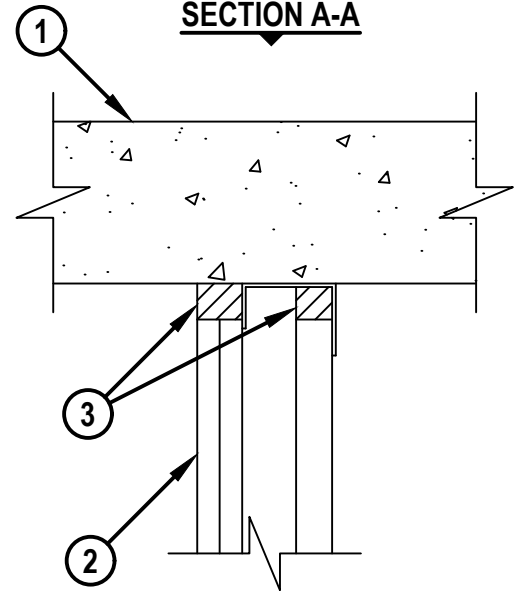
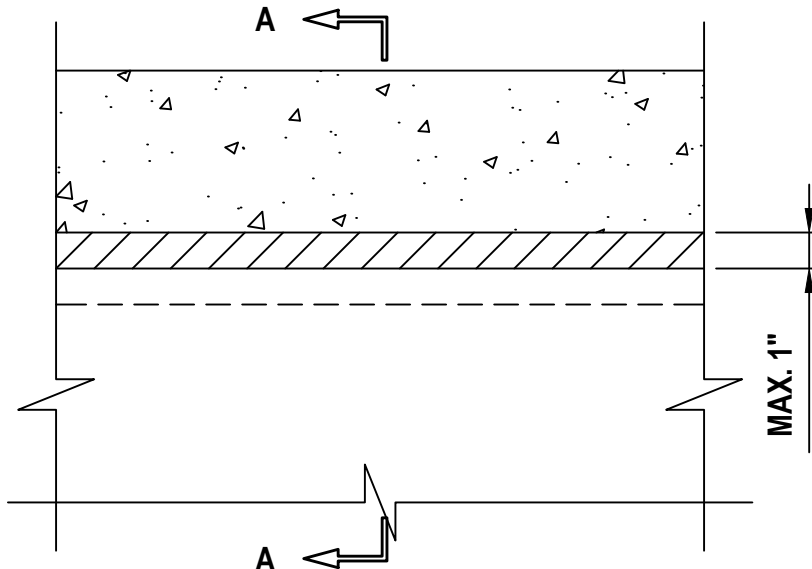
TOP OF WALL JOINT : GYPSUM SHAFT WALL ASSEMBLY

ASSEMBLY RATING = 2-HR.

CLASS II MOVEMENT CAPABILITIES - 8% COMPRESSION OR EXTENSION

L-RATING AT AMBIENT = LESS THAN 1 CFM / LIN FT

L-RATING AT 400°F = LESS THAN 1 CFM / LIN FT

FRONT VIEW**SECTION A-A**

1. LIGHTWEIGHT OR NORMAL WEIGHT CONCRETE FLOOR ASSEMBLY (MINIMUM 4-1/2" THICK) (2-HR. FIRE-RATING).
2. GYPSUM SHAFT WALL ASSEMBLY (UL/cUL CLASSIFIED U400 OR V400 SERIES) (2-HR. FIRE-RATING) TO INCLUDE THE FOLLOWING CONSTRUCTION FEATURES :
 - A. "J" SHAPED CEILING RUNNER, MINIMUM 2-1/2" WIDE WITH LEGS OF 1-1/4" AND 2" (MINIMUM 24 GA.) FASTENED TO UNDERSIDE OF CONCRETE FLOOR WITH STEEL FASTENERS AT LOCATION NOT GREATER THAN 2" FROM ENDS AND MAXIMUM 24" O.C.
 - B. "C-H" OR "C-T" SHAPED STUDS (MINIMUM 2-1/2" WIDE, MINIMUM 25 GA.) CUT 3/8" TO 1/2" LESS IN LENGTH THAN ASSEMBLY HEIGHT, NESTING IN CEILING RUNNER WITHOUT ATTACHMENT.
 - C. NOMINAL 1" THICK GYPSUM LINER PANEL. TYPE AND SHEET ORIENTATION AS SPECIFIED IN THE INDIVIDUAL UL DESIGN.
 - D. NOMINAL 1/2" OR 5/8" THICK GYPSUM WALLBOARD. TYPE, NUMBER OF LAYERS, AND SHEET ORIENTATION AS SPECIFIED IN THE INDIVIDUAL UL DESIGN.
3. MINIMUM 1" DEPTH HILTI CP 606 FLEXIBLE FIRESTOP SEALANT OR HILTI CFS-S SIL GG FIRESTOP SILICONE SEALANT.

NOTES : 1. AS AN ALTERNATE TO CEILING RUNNER IN ITEM 2, CEILING RUNNERS, MANUFACTURED BY BRADY CONSTRUCTION INNOVATIONS, INC., DBA SLIPTRACK SYSTEMS, CEMCO, OR THE STEEL NETWORK, INC., MAY BE USED. CONSULT THE UL FIRE RESISTANCE DIRECTORY FOR INSTALLATION INSTRUCTIONS.

2. AS AN OPTION, THE STEEL STUDS MAY INCORPORATE VERTICAL DEFLECTION CLIPS (SLD 150, MANUFACTURED BY THE STEEL NETWORK, INC.) FOR ATTACHMENT TO THE CEILING RUNNER. CONSULT THE UL FIRE RESISTANCE DIRECTORY FOR INSTALLATION INSTRUCTIONS.

**Hilti Firestop Systems**

HILTI, Inc.
Plano, Texas USA (800) 879-8000

Sheet	1 of 1
Scale	3/16" = 1"
Date	Jan. 16, 2026

Drawing No.

**HWD
0342n***Saving Lives through Innovation and Education*