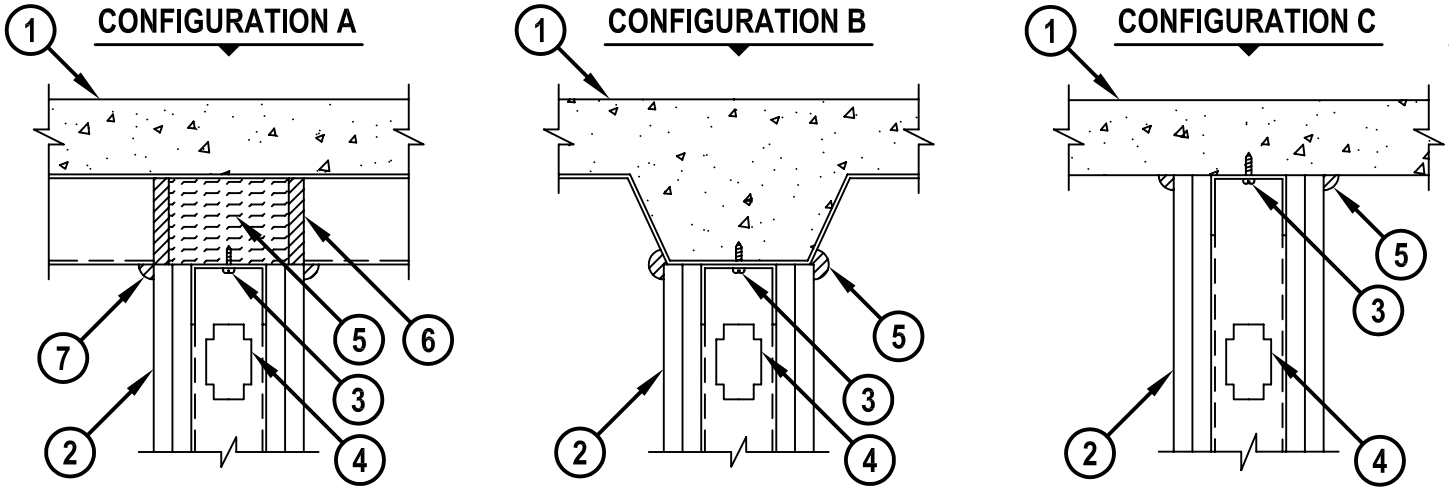


TOP OF WALL JOINT : GYPSUM WALL ASSEMBLY

ASSEMBLY RATING = 1-HR. OR 2-HR. (DEPENDING ON RATING OF WALL AND FLOOR ASSEMBLY)
 L-RATING AT AMBIENT - LESS THAN 1 CFM/LINEAR FOOT
 L-RATING AT 400° F - LESS THAN 1 CFM/LINEAR FOOT

HWS0054c.063003



1. FLOOR OR ROOF ASSEMBLY (1-HR. OR 2-HR. FIRE-RATING) :
 - A. LIGHTWEIGHT OR NORMAL WEIGHT CONCRETE FLOOR (MIN. 2-1/2" THICK) OVER METAL DECKING (UL/ULC CLASSIFIED D700 OR D900 SERIES).
 - B. INSULATING CONCRETE (MIN. 2-1/4" THICK) OVER METAL DECKING (UL/ULC CLASSIFIED P900 SERIES).
 - C. LIGHTWEIGHT OR NORMAL WEIGHT CONCRETE FLOOR (MINIMUM 4-1/2" THICK).
2. GYPSUM WALL ASSEMBLY. (UL/ULC CLASSIFIED U400 SERIES) (1-HR. OR 2-HR. FIRE-RATING). GYPSUM BOARD TO BE BUTTED TIGHTLY TO BOTTOM OF STEEL DECK, ROOF DECK, OR CONCRETE FLOOR.
3. CEILING RUNNER (MIN. 25 GA., WITH 2" FLANGES) FASTENED TO UNDERSIDE OF DECK OR CONCRETE FLOOR.
4. STEEL STUDS (MIN. 2-1/2" WIDE), CUT 1/2" TO 3/4" LESS IN LENGTH THAN ASSEMBLY HEIGHT, NESTING IN CEILING RUNNER WITHOUT ATTACHMENT.

FIRESTOP CONFIGURATION A

5. HILTI CP 777 SPEED PLUGS FRICTION FITTED TO COMPLETELY FILL FLUTE, RECESSED 1/2" ON EACH SIDE OF WALL.
6. MINIMUM 1/2" DEPTH HILTI CP 606 FLEXIBLE FIRESTOP SEALANT.
7. MINIMUM 1/2" BEAD HILTI CP 606 FLEXIBLE FIRESTOP SEALANT AT GYPSUM WALL AND METAL DECK ASSEMBLY INTERFACE.

NOTE : AS AN ALTERNATE TO HILTI CP 777 SPEED PLUGS, MINERAL WOOL (MIN. 4 PCF DENSITY) COMPRESSED 20% MAY BE USED.

FIRESTOP CONFIGURATION B

5. MINIMUM 1/2" BEAD HILTI CP 606 FLEXIBLE FIRESTOP SEALANT AT GYPSUM WALL AND METAL DECK ASSEMBLY INTERFACE.

FIRESTOP CONFIGURATION C

5. MINIMUM 1/2" BEAD HILTI CP 606 FLEXIBLE FIRESTOP SEALANT AT GYPSUM WALL AND CONCRETE FLOOR ASSEMBLY INTERFACE.

	HILTI, Inc. Tulsa, Oklahoma USA (918) 252-6000	Sheet 1 of 1	Drawing No. HWS 0054c
		Scale 5/32" = 1"	
		Date June 30, 2003	