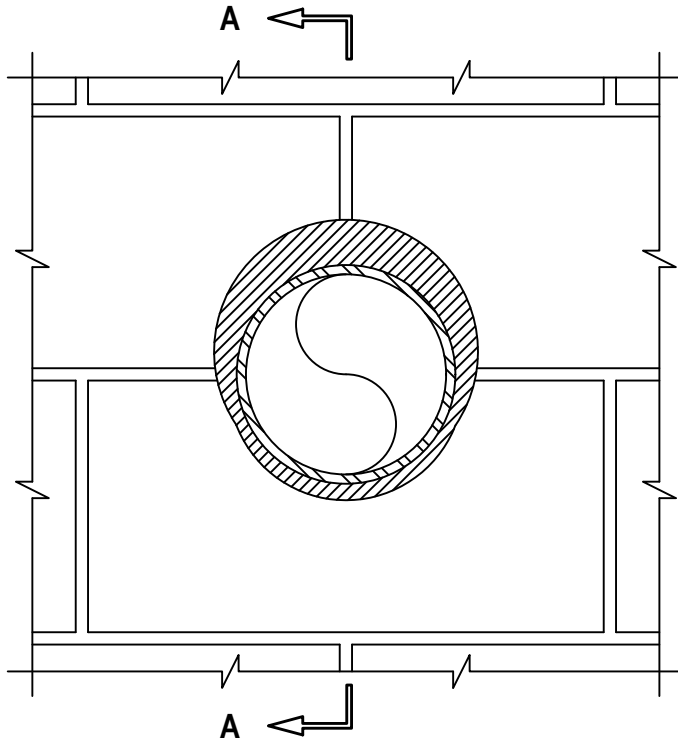
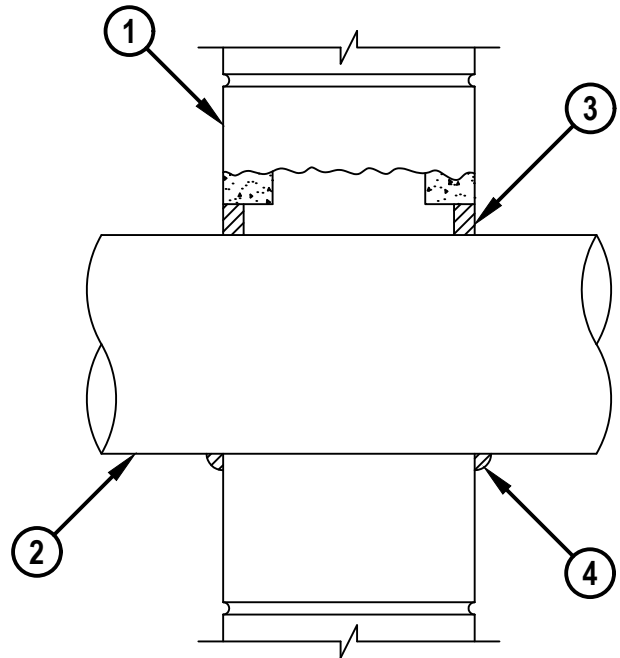


**METAL PIPE THROUGH CONCRETE WALL OR CONCRETE BLOCK WALL ASSEMBLY**

F-RATING = 1-HR. OR 2-HR. (SEE NOTES BELOW)  
 T-RATING = 0-HR. OR 1/2-HR. (SEE NOTES BELOW)  
 L-RATING AT AMBIENT = LESS THAN 1 CFM / SQ FT  
 L-RATING AT 400° F = LESS THAN 1 CFM / SQ FT

WJ1067j.122925

**FRONT VIEW****SECTION A-A**

**METAL PIPE THROUGH CONCRETE WALL OR CONCRETE BLOCK WALL ASSEMBLY**

F-RATING = 1-HR. OR 2-HR. (SEE NOTES BELOW)  
 T-RATING = 0-HR. OR 1/2-HR. (SEE NOTES BELOW)  
 L-RATING AT AMBIENT = LESS THAN 1 CFM / SQ FT  
 L-RATING AT 400° F = LESS THAN 1 CFM / SQ FT

WJ1067j.122925

1. CONCRETE WALL ASSEMBLY (1-HR. OR 2-HR. FIRE-RATING) :
  - A. LIGHTWEIGHT OR NORMAL WEIGHT CONCRETE WALL (MIN. 3-3/4" THICK, FOR 1-HR. FIRE-RATING).
  - B. LIGHTWEIGHT OR NORMAL WEIGHT CONCRETE WALL (MIN. 5" THICK, FOR 2-HR. FIRE-RATING).
  - C. ANY UL/cUL CLASSIFIED CONCRETE BLOCK WALL.
2. PENETRATING ITEM TO BE ONE OF THE FOLLOWING :
  - A. MAXIMUM 30" NOMINAL DIAMETER STEEL PIPE (SCHEDULE 10 OR HEAVIER).
  - B. MAXIMUM 30" DIAMETER STAINLESS STEEL PIPE (SCHEDULE 10 OR HEAVIER).
  - C. MAXIMUM 30" NOMINAL DIAMETER CAST IRON PIPE.
  - D. MAXIMUM 6" NOMINAL DIAMETER COPPER PIPE (REGULAR OR HEAVIER).
  - E. MAXIMUM 6" DIAMETER COPPER TUBING (TYPE L OR HEAVIER).
  - F. MAXIMUM 6" NOMINAL DIAMETER STEEL CONDUIT.
  - G. MAXIMUM 4" NOMINAL DIAMETER STEEL EMT.
  - H. MAXIMUM 2" NOMINAL DIAMETER ALUMINUM EMT.
  - I. MAXIMUM 2" NOMINAL DIAMETER ALUMINUM CONDUIT.
  - J. MAXIMUM 2" NOMINAL DIAMETER ALUMINUM PIPE (SCH. 5 OR HEAVIER).
3. MINIMUM 5/8" DEPTH HILTI FS-ONE MAX INTUMESCENT FIRESTOP SEALANT.
4. MINIMUM 1/2" BEAD HILTI FS-ONE MAX INTUMESCENT FIRESTOP SEALANT APPLIED AT POINT OF CONTACT.

**NOTES :** 1. MAXIMUM DIAMETER OF OPENING = 32-1/4".  
 2. ANNULAR SPACE (PENETRATIONS 2A THROUGH 2G) = MINIMUM 0", MAXIMUM 2-1/4".  
 3. ANNULAR SPACE (PENETRATIONS 2H THROUGH 2J) = MINIMUM 0", MAXIMUM 1-1/2".  
 4. PENETRATIONS 2A THROUGH 2G MAY BE INSTALLED WITH CONTINUOUS POINT OF CONTACT.  
 5. WHEN PENETRATIONS 2H THROUGH 2J ARE INSTALLED, CONCRETE WALL ASSEMBLY SHALL BE MINIMUM 6" THICK FOR A 1-HR. OR 2-HR. F-RATING.  
 6. WHEN PENETRATIONS 2H THROUGH 2J ARE INSTALLED, THE T-RATING IS 1/2-HR.  
 7. WHEN PENETRATIONS 2H THROUGH 2J ARE INSTALLED, THE CAN/ULC-S115 TESTING STANDARD IS NOT APPLICABLE.



**Hilti Firestop Systems**

HILTI, Inc.  
 Plano, Texas USA (800) 879-8000

Sheet	2 of 2
Scale	-
Date	Dec. 29, 2025

Drawing No.

**WJ  
1067j**

*Saving Lives through Innovation and Education*