

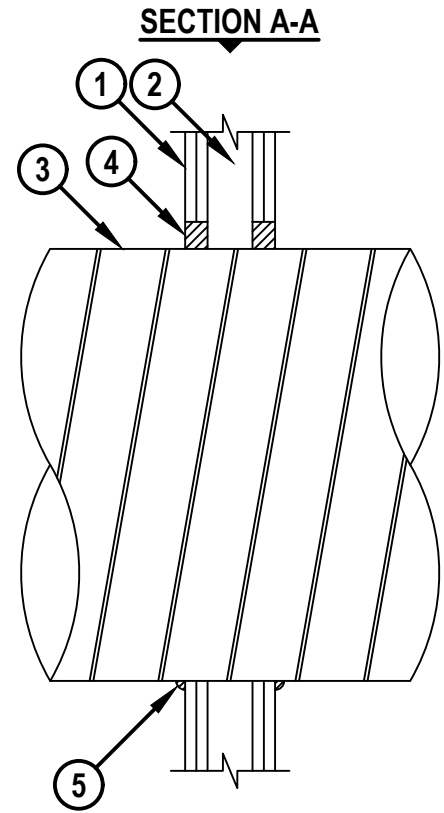
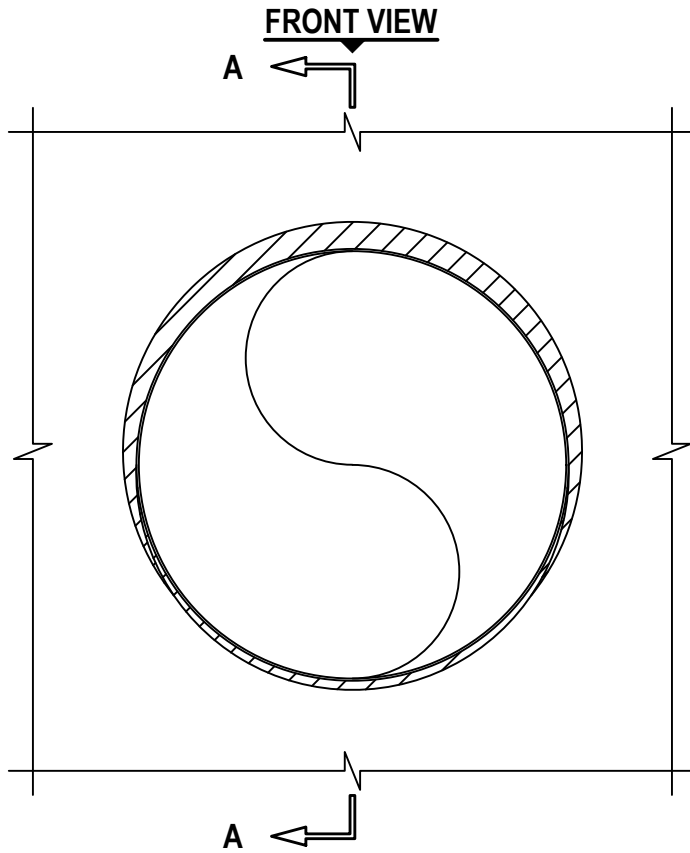
UL/cUL SYSTEM NO. W-L-7042

METAL DUCT (WITHOUT DAMPER) THROUGH GYPSUM WALL ASSEMBLY

F-RATING = 1-HR. OR 2-HR.

T-RATING = 0-HR.

WL7042j.052424



HILTI, Inc.
Plano, Texas USA (800) 879-8000

Sheet	1 of 2
Scale	3/32" = 1"
Date	May 24, 2024

Drawing No.
**WL
7042j**

Saving Lives through Innovation and Education

UL/cUL SYSTEM NO. W-L-7042

METAL DUCT (WITHOUT DAMPER) THROUGH GYPSUM WALL ASSEMBLY

F-RATING = 1-HR. OR 2-HR.

T-RATING = 0-HR.

WL7042j.052424

1. GYPSUM WALL ASSEMBLY (UL/cUL CLASSIFIED U300, U400, V400, OR W400 SERIES) (1-HR. OR 2-HR. FIRE-RATING) (2-HR. SHOWN).
2. [NOT SHOWN] WOOD STUDS TO CONSIST OF NOMINAL 2" x 4" LUMBER AND SPACED 16" OC. STEEL STUDS TO BE MINIMUM 2-1/2" WIDE AND SPACED 24" OC.
3. PENETRATING ITEM TO BE ONE OF THE FOLLOWING :
 - A. MAXIMUM 24" NOMINAL DIAMETER SPIRAL WOUND SHEET METAL DUCT (MIN. 28 GA.).
 - B. MAXIMUM 12" NOMINAL DIAMETER SHEET METAL DUCT (MIN. 28 GAUGE).
4. HILTI FIRESTOP SEALANT APPLIED PER TABLE BELOW.
5. MINIMUM 1/2" BEAD HILTI FS-ONE MAX INTUMESCENT FIRESTOP SEALANT, HILTI CP 606 FLEXIBLE FIRESTOP SEALANT, OR HILTI CFS-S SIL GG FIRESTOP SILICONE SEALANT APPLIED AT POINT OF CONTACT.

F-RATING, HR.	SEALANT TYPE	SEALANT THICKNESS, IN.
1 OR 2	FS-ONE MAX	5/8
1	CFS-S SIL GG OR CP 606	5/8
2	CFS-S SIL GG OR CP 606	1-1/4

NOTES : 1. MAXIMUM DIAMETER OF OPENING FOR STEEL STUD WALLS = 25-1/2".
2. MAXIMUM DIAMETER OF OPENING FOR WOOD STUD WALLS = 14-1/2".
3. ANNULAR SPACE = MINIMUM 0", MAXIMUM 1-1/2".



HILTI, Inc.
Plano, Texas USA (800) 879-8000

Sheet	2 of 2
Scale	-
Date	May 24, 2024

Drawing No.
**WL
7042j**

Saving Lives through Innovation and Education