

# **PLASTIC PIPE THROUGH CONCRETE FLOOR**

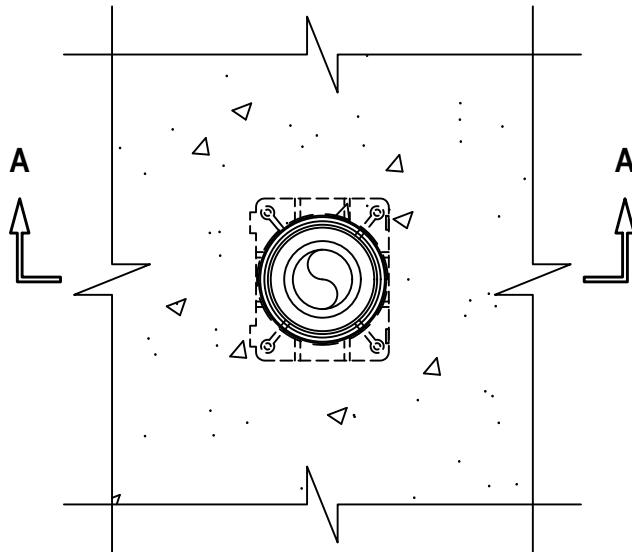
F-RATING = 3-HR.

FT-RATING = 0-HR. OR 2-HR. (SEE TABLES AND NOTES BELOW)

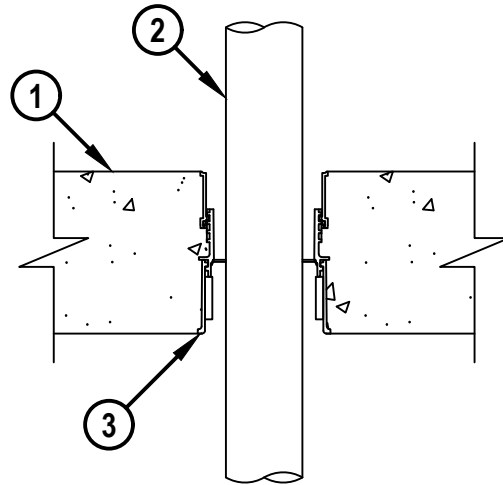
FH AND FTH-RATINGS = 0-HR.

NOTE : TESTED WITH A 50 Pa PRESSURE DIFFERENTIAL

TOP VIEW



SECTION A-A



1. LIGHTWEIGHT OR NORMAL WEIGHT CONCRETE FLOOR (MINIMUM 4-1/2" THICK) (3-HR. FIRE-RATING).
2. MAXIMUM 2" NOMINAL DIAMETER PEX TUBING (SDR 9) (CLOSED OR VENTED PIPING SYSTEM).
3. HILTI CFS-CID U 2" CA CAST-IN FIRESTOP DEVICE CAST OR GROUTED INTO CONCRETE FLOOR (SEE TABLE BELOW).

MINIMUM CONCRETE THICKNESS	PEX DIAMETER	PRODUCT DESCRIPTION	RATINGS, HR.			
			F	FH	FT	FTH
4-1/2"	2"	CFS-CID U 2" CA	3	0	0 AND 2	0
4-1/2"	LESS THAN 2"	CFS-CID U 2" CA	3	0	0	0

NOTES : 1. FOR PEX TUBING LESS THAN 2" DIAMETER, MINIMUM 4" THICKNESS MINERAL WOOL SHALL BE TIGHTLY PACKED INTO HILTI CAST-IN FIRESTOP DEVICE, FLUSH WITH TOP SURFACE OF DEVICE.

2. 2-HR. T-RATING ONLY APPLIES TO CLOSED PIPING SYSTEMS.



**Hilti Firestop Systems**

HILTI, Inc.  
Plano, Texas USA (800) 879-8000

Sheet 1 of 1  
Scale 3/16" = 1"  
Date Sep. 28, 2023

Drawing No.  
**cUL**  
**FA2417a**

*Saving Lives through Innovation and Education*