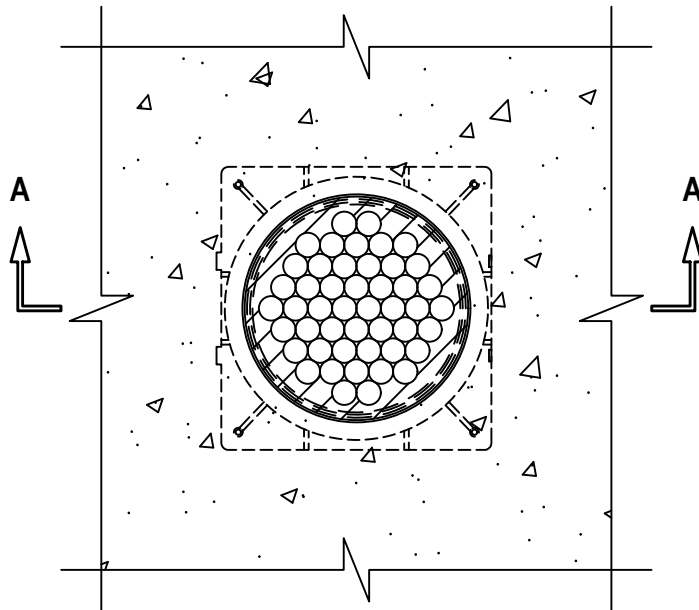


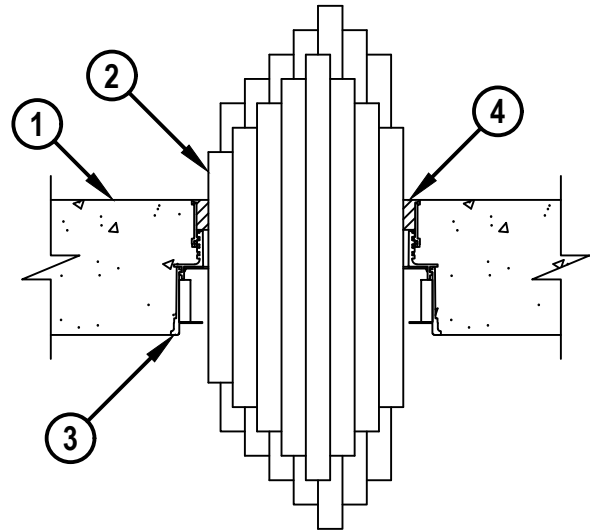
UL/cUL SYSTEM NO. F-A-3091
CABLE BUNDLE THROUGH CONCRETE FLOOR

F-RATING = 3-HR.
T-RATING = 0-HR., 1/4-HR., OR 1/2-HR.

TOP VIEW



SECTION A-A



FA3091a.092623



HILTI, Inc.
Plano, Texas USA (800) 879-8000

Sheet	1 of 2
Scale	5/32" = 1"
Date	Sep. 26, 2023

Drawing No.

**FA
3091a**

Saving Lives through Innovation and Education

UL/cUL SYSTEM NO. F-A-3091
CABLE BUNDLE THROUGH CONCRETE FLOOR

F-RATING = 3-HR.
T-RATING = 0-HR., 1/4-HR., OR 1/2-HR.

FA3091a.092623

1. LIGHTWEIGHT OR NORMAL WEIGHT CONCRETE FLOOR (MINIMUM 4-1/2" THICK) (3-HR. FIRE RATING).
2. CABLE BUNDLE CONSISTING OF ANY OF THE FOLLOWING :
 - A. MAXIMUM 300 PAIR NO. 24 AWG TELEPHONE CABLE WITH PVC JACKET.
 - B. MAXIMUM 750 KCMIL POWER CABLE WITH PVC JACKET.
 - C. MAXIMUM 7/C NO. 12 AWG POWER CABLE WITH PVC JACKET.
 - D. MAXIMUM (24 FIBER) 1/2" DIAMETER FIBER-OPTIC CABLE.
 - E. MAXIMUM 3/C NO. 12 AWG METAL-CLAD CABLE.
 - F. ANY CABLES, METAL-CLAD CABLES, OR ARMORED CABLES CURRENTLY LISTED UNDER THE THROUGH PENETRATING PRODUCTS CATEGORY (SEE NOTE NO. 4 BELOW).
3. HILTI CFS-CID U [2", 3", 4", OR 6"] OR CFS-CID U 2" CA CAST-IN FIRESTOP DEVICE CAST OR GROUTED INTO CONCRETE FLOOR WITH A MAXIMUM 2" EXTENSION ABOVE FLOOR (SEE TABLE BELOW).
4. MINIMUM 1" DEPTH HILTI CP 618 FIRESTOP PUTTY STICK APPLIED AROUND CABLES (SEE NOTES BELOW).

MAXIMUM DIAMETER OF CABLE BUNDLE	PRODUCT DESCRIPTION	T-RATING (HR.)
2"	CFS-CID U 2", CFS-CID U 2" CA	1/4
3"	CFS-CID U 3"	1/2
4-1/2"	CFS-CID U 4"	1/2
6-1/2"	CFS-CID U 6"	0

- NOTES : 1. AS AN ALTERNATE TO HILTI CP 618 FIRESTOP PUTTY STICK, MINIMUM 2" THICKNESS MINERAL WOOL (MINIMUM 4 PCF DENSITY) MAY BE TIGHTLY PACKED INTO FIRESTOP DEVICE, FLUSH WITH TOP SURFACE OF DEVICE.
2. FILL MATERIAL IS OPTIONAL FOR MINIMUM 2" DIAMETER CABLE BUNDLES INSTALLED IN 2" DEVICES, MINIMUM 2-1/2" DIAMETER CABLE BUNDLES INSTALLED IN 3" DEVICES AND MINIMUM 3" DIAMETER CABLE BUNDLES INSTALLED IN 4" DEVICES.
3. T-RATING IS LIMITED TO 1/4 HOUR WHEN CP 618 (ITEM 4) OR MINERAL WOOL (NOTE 1) IS NOT INSTALLED.
4. T-RATING IS 0-HOUR WHEN ITEM 2F IS USED.



HILTI, Inc.
Plano, Texas USA (800) 879-8000

Sheet	2 of 2
Scale	-
Date	Sep. 26, 2023

Drawing No.

**FA
3091a**

Saving Lives through Innovation and Education