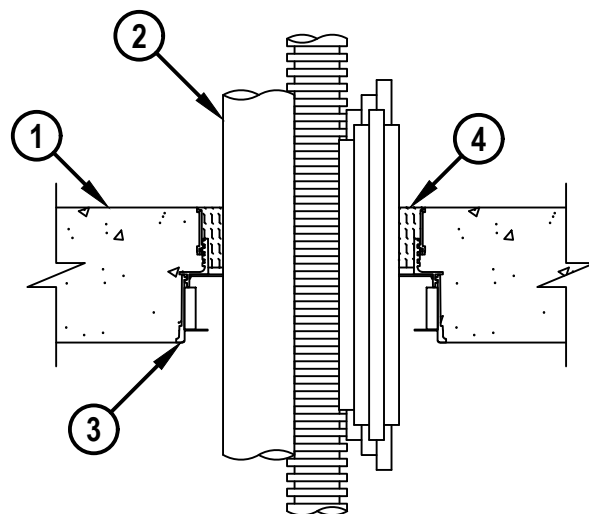
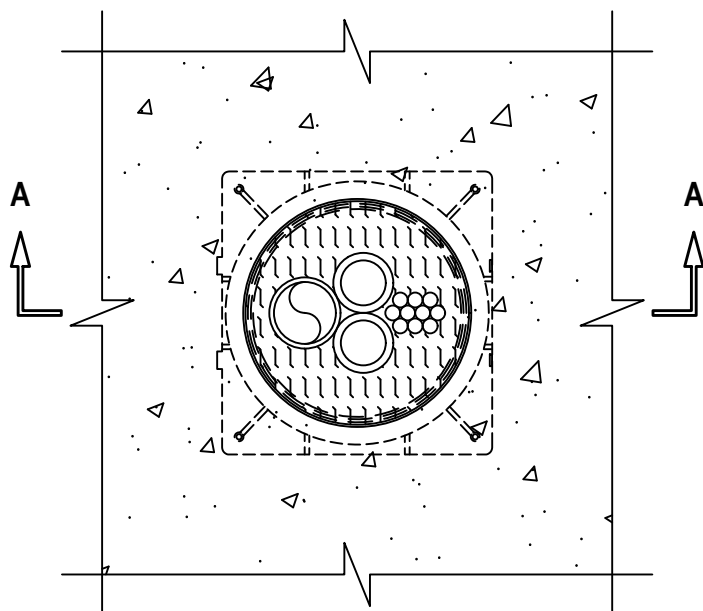


MULTIPLE PENETRANTS THROUGH CONCRETE FLOOR

F-RATING = 3-HR.

T-RATING = 0-HR.

FA8069a.092723

TOP VIEW**SECTION A-A**

1. LIGHTWEIGHT OR NORMAL WEIGHT CONCRETE FLOOR (MINIMUM 4-1/2" THICK) (3-HR. FIRE-RATING).
2. PENETRATING ITEMS TO BE ANY BUNDLED COMBINATION OF THE FOLLOWING. MAXIMUM ONE METALLIC PENETRANT MAY BE USED.
 - A. MAXIMUM 2" NOMINAL DIAMETER STEEL PIPE (SCHEDULE 10 OR HEAVIER).
 - B. MAXIMUM 2" NOMINAL DIAMETER CAST OR DUCTILE IRON PIPE.
 - C. MAXIMUM 2" NOMINAL DIAMETER STEEL CONDUIT OR STEEL EMT.
 - D. MAXIMUM 2" NOMINAL DIAMETER ENT (MAX. QTY. = 2) (SEE NOTE NO. 2 BELOW).
 - E. MAXIMUM 2" DIAMETER CABLE BUNDLE CONSISTING OF MAXIMUM 7/C NO. 12 AWG CABLE AND/OR MAXIMUM 25 PAIR NO. 24 AWG TELEPHONE CABLE.
3. HILTI CFS-CID U [2", 3", 4", OR 6"] OR CFS-CID U 2" CA CAST-IN FIRESTOP DEVICE CAST OR GROUTED INTO CONCRETE FLOOR. DEVICE TO BE CUT FLUSH WITH TOP SURFACE OF CONCRETE FLOOR.
4. MINIMUM 2" THICKNESS MINERAL WOOL (MIN. 4 PCF DENSITY) TIGHTLY PACKED AND FLUSH WITH TOP OF FIRESTOP DEVICE.

NOTES : 1. ANNULAR SPACE BETWEEN BUNDLE AND DEVICE = MINIMUM 1/2", MAXIMUM 2".
 2. ENT NOT APPLICABLE FOR USE IN CANADA.

HILTI
 Hilti Firestop Systems

HILTI, Inc.
 Plano, Texas USA (800) 879-8000

Sheet	1 of 1
Scale	5/32" = 1"
Date	Sep. 27, 2023

Drawing No.

FA
8069a

Saving Lives through Innovation and Education