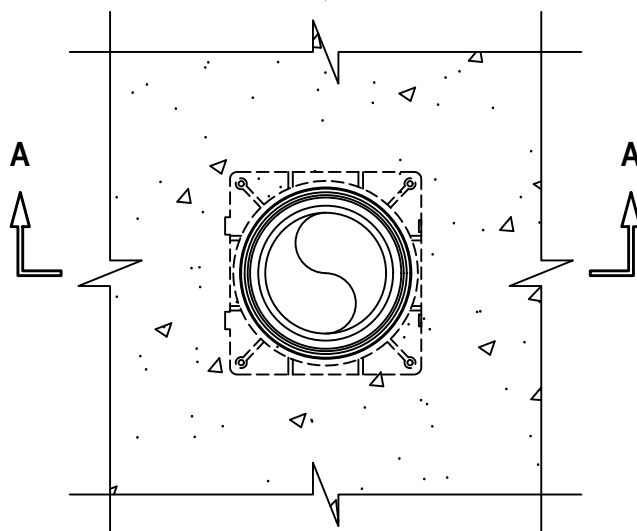
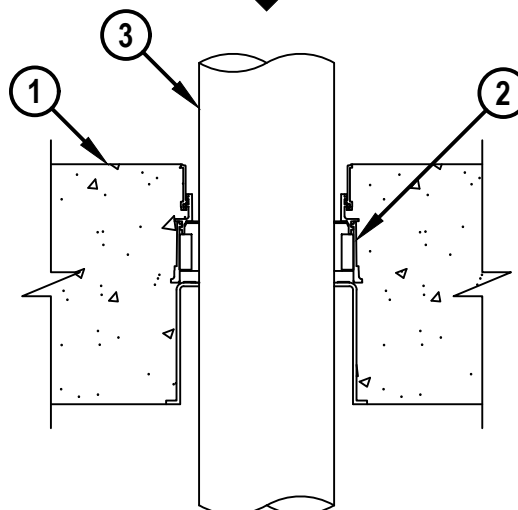


AERATOR FITTING WITH STEEL OR CAST IRON DRAIN THROUGH CONCRETE FLOOR

F-RATING = 3-HR.

T-RATING = 1/2-HR.

W-RATING = CLASS I (SEE NOTE NO. 2 BELOW)

TOP VIEW**SECTION A-A**

1. LIGHTWEIGHT OR NORMAL WEIGHT CONCRETE FLOOR ASSEMBLY (MINIMUM 5" OR 6-1/2" THICK) (3-HR. FIRE-RATING) (SEE NOTE BELOW).
2. HILTI CFS-CID U [2", 3", OR 4"] OR CFS-CID U 2" CA CAST-IN FIRESTOP DEVICE, THREADED ONTO HILTI CFS-CID AA [2", 3", OR 4"] AERATOR ADAPTER AND CAST OR GROUTED INTO CONCRETE FLOOR WITH MAXIMUM 2" EXTENSION ABOVE FLOOR.
3. PENETRATING ITEM TO BE ONE OF THE FOLLOWING (SEE TABLE BELOW) :
 - A. MAXIMUM 4" NOMINAL DIAMETER STEEL PIPE (SCHEDULE 40 OR HEAVIER).
 - B. MAXIMUM 4" NOMINAL DIAMETER CAST OR DUCTILE IRON PIPE.
4. [NOT SHOWN] MAXIMUM 4" NOMINAL DIAMETER CAST IRON AERATOR FITTING. FITTING SHALL NOT PENETRATE THE FIRESTOP DEVICE.

NOM PIPE DIAMETER	FIRESTOP DEVICE
1-1/4" TO 2"	CFS-CID U 2", CFS-CID U 2" CA
2" TO 3"	CFS-CID U 3"
3" TO 4"	CFS-CID U 4"

NOTES : 1. 4" AERATOR ADAPTER REQUIRES MINIMUM 6-1/2" FLOOR THICKNESS FOR CORRECT INSTALLATION.

2. WHEN W-RATING IS REQUIRED - WHEN NOMINAL PIPE DIAMETER MATCHES DEVICE SIZE, PIPE MAY BE INSTALLED IN ANY ORIENTATION. WHEN NOMINAL PIPE DIAMETER IS SMALLER THAN DEVICE SIZE, PIPE MUST BE INSTALLED FROM THE BOTTOM.

**Hilti Firestop Systems**

HILTI, Inc.
Plano, Texas USA (800) 879-8000

Sheet 1 of 1

Scale 5/32" = 1"

Date May 22, 2024

Drawing No.

FB
1041b

Saving Lives through Innovation and Education