

UL/cUL SYSTEM NO. F-B-2081

PLASTIC/METAL PIPE TRANSITION THROUGH CONCRETE FLOOR

F-RATING = 2-HR.

T-RATING = 2-HR.

L-RATING AT AMBIENT = LESS THAN 1 CFM / SQ FT

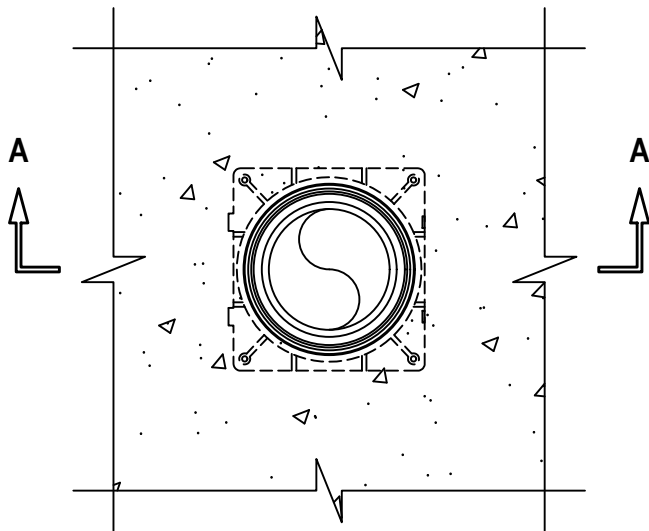
L-RATING AT 400°F = LESS THAN 1 CFM / SQ FT

W-RATING = CLASS I (SEE NOTE BELOW)

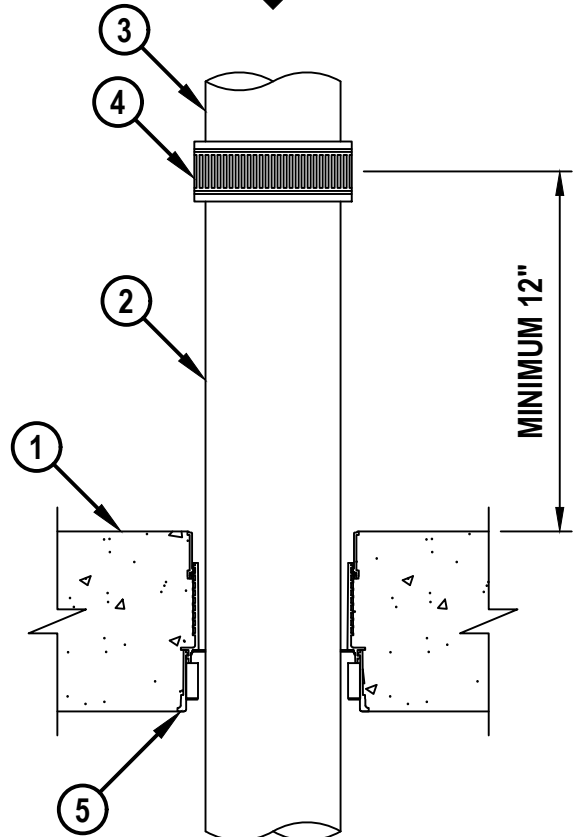
NOTE : TESTED WITH A 2.5 Pa OR 50 Pa PRESSURE DIFFERENTIAL

FB2081b.052224

TOP VIEW



SECTION A-A



Hilti Firestop Systems

HILTI, Inc.
Plano, Texas USA (800) 879-8000

Sheet	1 of 2
Scale	5/32" = 1"
Date	May 22, 2024

Drawing No.

**FB
2081b**

Saving Lives through Innovation and Education

PLASTIC/METAL PIPE TRANSITION THROUGH CONCRETE FLOOR

F-RATING = 2-HR.

T-RATING = 2-HR.

L-RATING AT AMBIENT = LESS THAN 1 CFM / SQ FT

L-RATING AT 400°F = LESS THAN 1 CFM / SQ FT

W-RATING = CLASS I (SEE NOTE BELOW)

NOTE : TESTED WITH A 2.5 Pa OR 50 Pa PRESSURE DIFFERENTIAL

FB2081b.052224

1. LIGHTWEIGHT OR NORMAL WEIGHT CONCRETE FLOOR (MINIMUM 6" THICK) (2-HR. FIRE-RATING).
2. NONMETALLIC PIPE TO BE ANY OF THE FOLLOWING AND TO EXTEND MINIMUM 12" ABOVE TOP SURFACE OF FLOOR (SEE TABLE BELOW) :
 - A. MAXIMUM 4" NOMINAL DIAMETER PVC PLASTIC PIPE (SCH 40) (CELLULAR OR SOLID CORE) (CLOSED OR VENTED PIPING SYSTEM).
 - B. MAXIMUM 4" NOMINAL DIAMETER CPVC (SDR 13.5) PLASTIC PIPE (CLOSED PIPING SYSTEM ONLY).
3. MAXIMUM 4" NOMINAL DIAMETER STEEL PIPE (SCH 10 OR HEAVIER) OR CAST/DUCTILE IRON PIPE.
4. COMPRESSION TYPE COUPLING WITH ELASTOMERIC GASKET AND A STAINLESS STEEL JACKET WITH STAINLESS STEEL BAND CLAMPS USED TO SECURE METALLIC PIPE WITH NON-METALLIC PIPE.
5. HILTI CFS-CID U [2", 3", OR 4"] OR CFS-CID U 2" CA CAST-IN FIRESTOP DEVICE, CAST OR GROUTED INTO CONCRETE FLOOR. DEVICE TO BE CUT FLUSH WITH TOP SURFACE OF CONCRETE FLOOR.

NOM PIPE DIAMETER	FIRESTOP DEVICE
1-1/4" TO 2"	CFS-CID U 2", CFS-CID U 2" CA
2" TO 3"	CFS-CID U 3"
3" TO 4"	CFS-CID U 4"

NOTES : 1. W-RATING APPLIES TO 2" AND 3" DEVICES ONLY.

2. WHEN W-RATING IS REQUIRED - WHEN NOMINAL PIPE DIAMETER MATCHES DEVICE SIZE, PIPE MAY BE INSTALLED IN ANY ORIENTATION. WHEN NOMINAL PIPE DIAMETER IS SMALLER THAN DEVICE SIZE, PIPE MUST BE INSTALLED FROM THE BOTTOM.



Hilti Firestop Systems

HILTI, Inc.
Plano, Texas USA (800) 879-8000

Sheet 2 of 2

Scale -

Date May 22, 2024

Drawing No.

FB
2081b

Saving Lives through Innovation and Education