

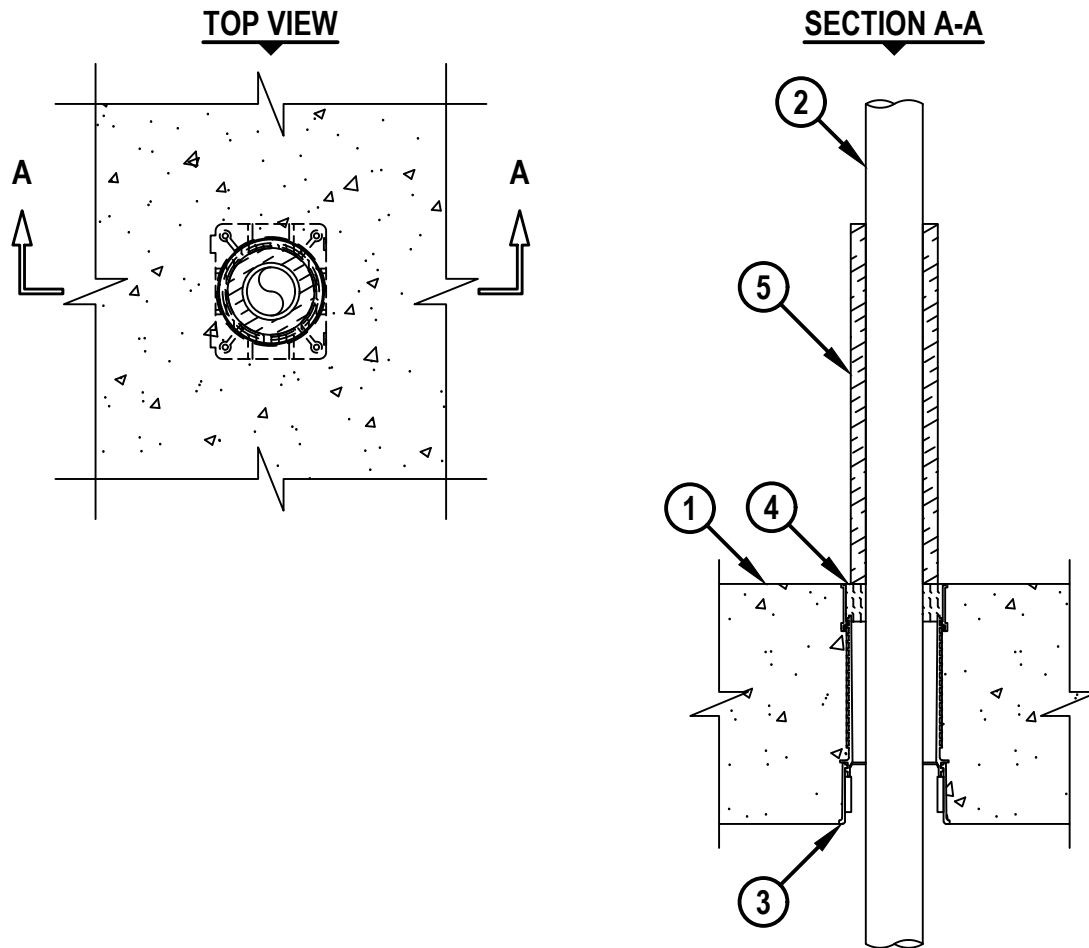
UL/cUL SYSTEM NO. F-B-2082  
**PLASTIC PIPE THROUGH CONCRETE FLOOR**

F-RATING = 2-HR.

T-RATING = 2-HR.

NOTE : TESTED WITH A 2.5 Pa AND 50 Pa PRESSURE DIFFERENTIAL (SEE NOTES NO. 1 AND 2 BELOW)

FB2082a.100223



**HILTI**  
Hilti Firestop Systems

HILTI, Inc.  
Plano, Texas USA (800) 879-8000

Sheet	1 of 2
Scale	5/32" = 1"
Date	Oct. 02, 2023

Drawing No.

**FB**  
**2082a**

*Saving Lives through Innovation and Education*

UL/cUL SYSTEM NO. F-B-2082  
**PLASTIC PIPE THROUGH CONCRETE FLOOR**

F-RATING = 2-HR.

T-RATING = 2-HR.

NOTE : TESTED WITH A 2.5 Pa AND 50 Pa PRESSURE DIFFERENTIAL (SEE NOTES NO. 1 AND 2 BELOW)

FB2082a.100223

1. LIGHTWEIGHT OR NORMAL WEIGHT CONCRETE FLOOR (MINIMUM 8" THICK) (2-HR. FIRE-RATING).
2. PENETRATING ITEM TO BE ONE OF THE FOLLOWING (SEE NOTES NO. 2 AND 3 BELOW) :
  - A. MAXIMUM 1-1/2" (38 mm) NOMINAL DIAMETER POLYPROPYLENE (PP) PLASTIC PIPE (SDR 7.4 OR 11).
  - B. MAXIMUM 1-1/2" (50 mm OD) NOMINAL DIAMETER AQUATHERM GREENPIPE POLYPROPYLENE (PP-R) PLASTIC PIPE (SDR 7.4 OR 11).
  - C. MAXIMUM 1-1/2" (50 mm OD) NOMINAL DIAMETER AQUATHERM BLUEPIPE POLYPROPYLENE (PP-RCT) PLASTIC PIPE (SDR 9 OR 11).
  - D. MAXIMUM 1-1/2" (50 mm OD) NOMINAL DIAMETER NUPI AMERICAS NIRON POLYPROPYLENE (PP-RCT) PLASTIC PIPE (SDR 7.3, 9, OR 11).
  - E. MAXIMUM 1-1/2" (50 mm OD) NOMINAL DIAMETER AQUATECHNIK NA FUSION-TECH POLYPROPYLENE (PP-RCT) PLASTIC PIPE (SDR 7.4 OR 11).
  - F. MAXIMUM 1-1/2" (50 mm OD) NOMINAL DIAMETER UPONOR POLYPROPYLENE (PP) PLASTIC PIPE (SDR 9 OR 11).
  - G. MAXIMUM 40 mm NOMINAL DIAMETER FUSIOTHERM PLASTIC PIPE (SDR 7.4 OR 11) MANUFACTURED BY AQUATHERM, INC.
  - H. MAXIMUM 1-1/2" (50 mm OD) NOMINAL DIAMETER POLYSTAR CT-WHITE (SDR 7.4, 9, OR 11) PP PLASTIC PIPE (MANUFACTURED BY ORION, INC.) (CLOSED PIPING SYSTEM ONLY).
3. HILTI CFS-CID U 2" OR CFS-CID U 2" CA CAST-IN FIRESTOP DEVICE CAST OR GROUTED INTO CONCRETE FLOOR (SEE NOTE NO. 1 BELOW).
4. MINIMUM 1-1/4" THICKNESS MINERAL WOOL (MIN. 4 PCF DENSITY) TIGHTLY PACKED, FLUSH WITH TOP OF DEVICE.
5. [OPTIONAL] MINIMUM 1/2" THICK GLASS FIBER PIPE INSULATION (EXTENDING MINIMUM 12" ABOVE FLOOR) INSTALLED AROUND PIPE, RESTING FLUSH WITH TOP SURFACE OF FLOOR.

NOTES : 1. HILTI CFS-CID U 2" CAST-IN FIRESTOP DEVICE IS FOR USE WITH 2.5 Pa ONLY.  
2. PENETRANT 2G AND 2H IS FOR USE WITH 2.5 Pa ONLY.  
3. CLOSED OR VENTED PIPING SYSTEMS UNLESS SPECIFIED OTHERWISE.



HILTI, Inc.  
Plano, Texas USA (800) 879-8000

Sheet	2 of 2
Scale	-
Date	Oct. 02, 2023

Drawing No.

**FB  
2082a**

*Saving Lives through Innovation and Education*