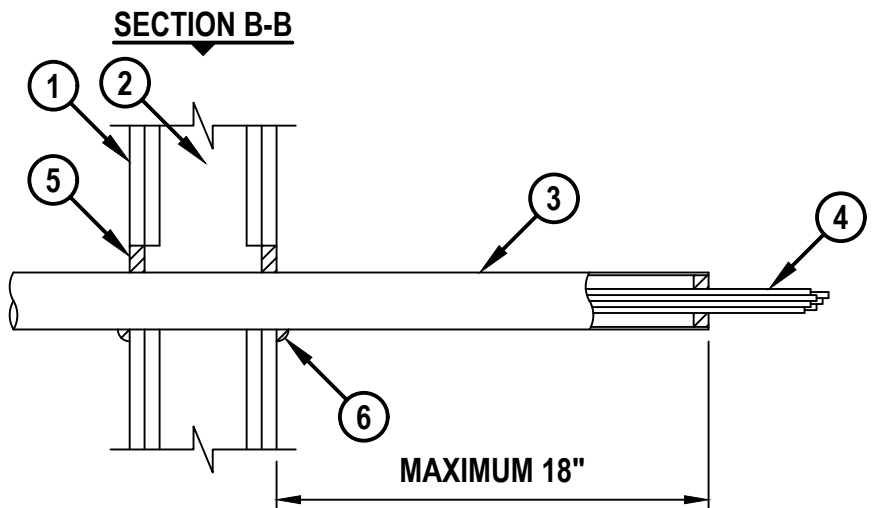
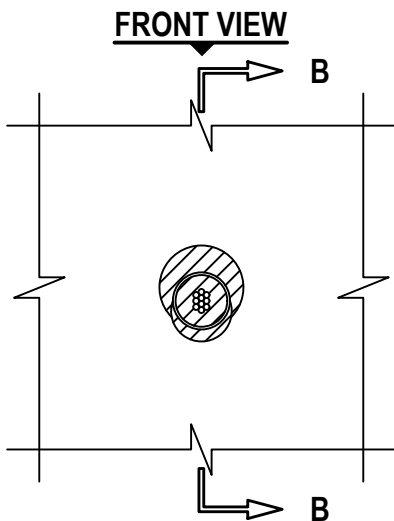
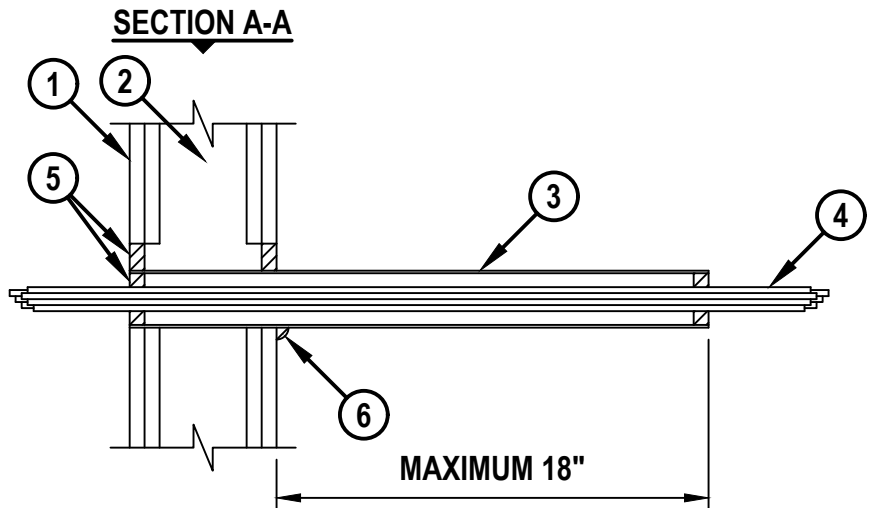
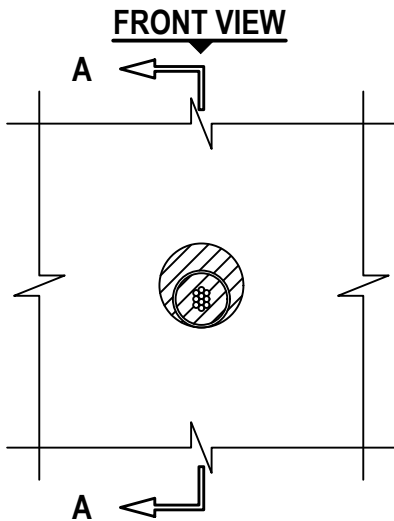


CABLE BUNDLE THROUGH GYPSUM WALL ASSEMBLY

F-RATING = 1-HR. OR 2-HR.

T-RATING = 0-HR.

WL 3505a.020525



1. GYPSUM WALL ASSEMBLY (UL/cUL CLASSIFIED U300, U400, V400, OR W400) (1-HR. OR 2-HR. FIRE-RATING) (2-HR. SHOWN).
2. [NOT SHOWN] WOOD STUDS TO CONSIST OF NOMINAL 2" x 4" LUMBER. STEEL STUDS TO BE MINIMUM 3-5/8" WIDE.
3. [OPTIONAL] MAXIMUM 2" NOMINAL DIAMETER ALUMINUM EMT, ALUMINUM PIPE (SCHEDULE 5 OR HEAVIER) OR ALUMINUM CONDUIT SLEEVE (SEE NOTE NO. 5 BELOW).



HILTI, Inc.
Plano, Texas USA (800) 879-8000

| | |
|-------|---------------|
| Sheet | 1 of 2 |
| Scale | 7/64" = 1" |
| Date | Feb. 05, 2025 |

Drawing No.
WL 3505a

CABLE BUNDLE THROUGH GYPSUM WALL ASSEMBLY

F-RATING = 1-HR. OR 2-HR.

T-RATING = 0-HR.

WL 3505a.020525

- 4. CABLE BUNDLE TO CONSIST OF ANY COMBINATION OF THE FOLLOWING (SEE NOTE NO. 4 BELOW) :
 - A. MAXIMUM 7/C NO. 12 AWG POWER CABLE WITH PVC JACKET.
 - B. MAXIMUM 25 PAIR NO. 24 AWG TELEPHONE CABLE WITH PVC JACKET.
 - C. MAXIMUM 1/2" DIAMETER RG/U COAXIAL CABLE WITH PVC JACKET.
 - D. MAXIMUM 3/C NO. 8 AWG METAL-CLAD CABLE (AFC CABLE SYSTEMS INC.).
 - E. MAXIMUM 3/C (+GROUND) NO. 8 AWG COPPER CONDUCTOR CABLE (ROMEX) WITH PVC INSULATION AND JACKETING.
 - F. MAXIMUM 5/8 DIAMETER FIBER-OPTIC CABLE WITH PVC JACKET.
 - G. MAXIMUM 3/4" DIAMETER COPPER GROUND CABLE WITH OR WITHOUT PVC JACKET.
 - H. MAXIMUM 1-1/4" DIAMETER SINGLE OR MULTIPLE CONDUCTOR TYPE MI CABLE (SEE NOTE NO. 3 BELOW).
 - I. ANY CABLES, METAL-CLAD CABLES, OR ARMORED CABLES CURRENTLY LISTED UNDER THE THROUGH PENETRATING PRODUCTS CATEGORY.
 - J. MAXIMUM 4/C (+GRND) NO. 300 KCMIL ALUMINUM SER CABLE WITH PVC INSULATION AND JACKETING.
 - K. MAXIMUM 4 PAIR NO. 22 AWG CAT 5 OR CAT 6 CABLE.
 - L. MAXIMUM RG 6/U COAXIAL CABLE WITH FLUORINATED ETHYLENE JACKET.
 - M. MAXIMUM 3/C NO. 8 AWG METAL-CLAD CABLE.
- 5. MINIMUM 5/8" DEPTH HILTI FS-ONE MAX INTUMESCENT FIRESTOP SEALANT.
- 6. MINIMUM 1/2" BEAD HILTI FS-ONE MAX INTUMESCENT FIRESTOP SEALANT APPLIED AT WALL/SLEEVE INTERFACE WHEN STEEL SLEEVE EXTENDS BEYOND ONE OR BOTH SIDES OF WALL.

NOTES :

1. MAXIMUM DIAMETER OF OPENING WITH SLEEVE = 3-1/2".
2. ANNULAR SPACE = MINIMUM 0", MAXIMUM 1-1/2".
3. A MINIMUM 1/8" SEPARATION SHOULD BE MAINTAINED BETWEEN MI CABLES AND ANY OTHER TYPES OF CABLE.
4. CABLES TO FILL MAXIMUM 45% OF CROSS-SECTIONAL AREA OF OPENING.
5. OPEN ENDED SLEEVE MAY EXTEND UP TO 18" BEYOND WALL SURFACE. AS AN OPTION, SLEEVE MAY EXTEND CONTINUOUSLY BEYOND ONE WALL SURFACE.
6. [OPTIONAL - NOT SHOWN] MINERAL WOOL (MIN. 4 PCF DENSITY) TIGHTLY PACKED, POLYURETHANE BACKER ROD, OR POLYETHYLENE BACKER ROD MAY BE INSTALLED RECESSED TO ACCOMMODATE FIRESTOP SEALANT OR PUTTY MAY BE USED AS BACKING MATERIAL.



HILTI, Inc.
Plano, Texas USA (800) 879-8000

| | |
|-------|---------------|
| Sheet | 2 of 2 |
| Scale | - |
| Date | Feb. 05, 2025 |

Drawing No.
**WL
3505a**