

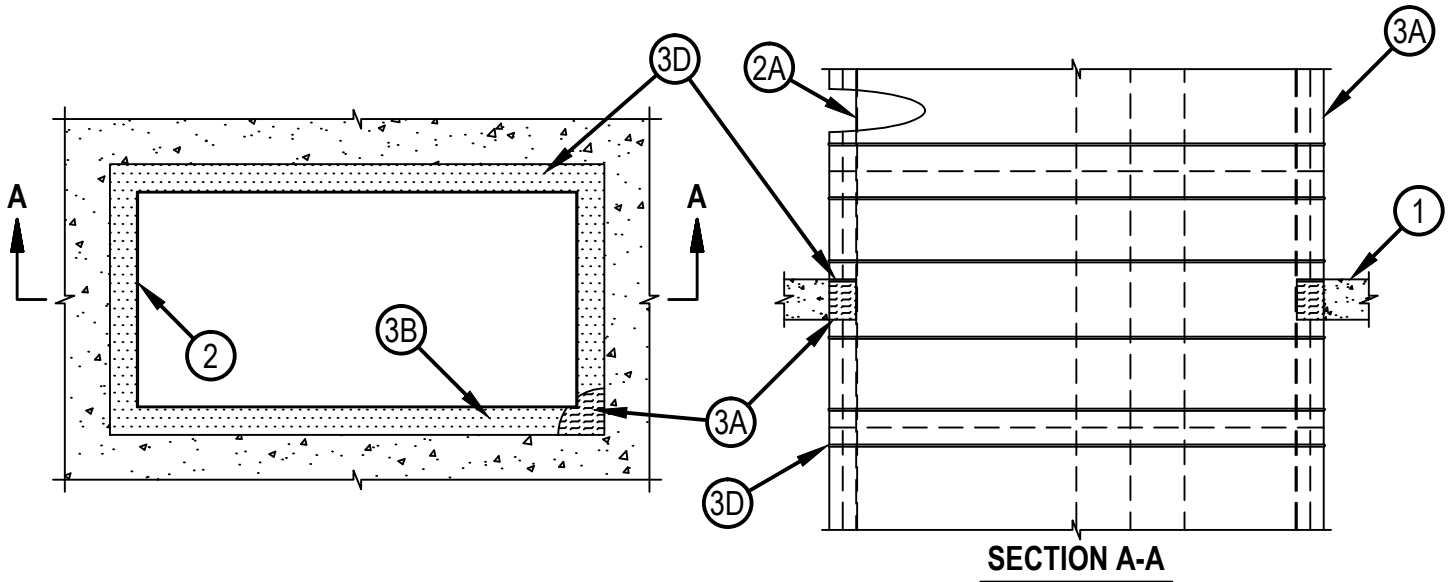


Classified by  
Underwriters Laboratories, Inc.  
to UL 1479 and CAN/ULC-S115

## System No. C-AJ-7153

CAJ 7153

ANSI/UL1479 (ASTM E814)	CAN/ULC S115
F Rating — 2 Hr	F Rating — 2 Hr
T Rating — 2 Hr	Ft Rating — 2 Hr
	FH Rating — 2 Hr
	FTH Rating — 2 Hr



1. Floor or Wall Assembly — Min 4-1/2 in. (114 mm) thick reinforced normal weight (140-150 pcf or 2243-2400 kg/m<sup>3</sup>) concrete floor or min 4-3/4 in. (121 mm) thick reinforced normal weight concrete wall. Wall may also be constructed of any UL Classified Concrete Blocks\*. Max area of opening is 11.5 ft<sup>2</sup> (1.07 m<sup>2</sup>) with a max dimension of 55 in. (1.24 m).

See Concrete Blocks (CAZT) category in the Fire Resistance Directory for names of manufacturers.

2. Through-Penetrant — One steel duct to be installed within the firestop system with an annular space of 3 in. (76 mm). Duct to be rigidly supported on both sides of floor or wall assembly. The following types of through-penetrants may be used:

A. Steel Air Duct — Max 24 by 49 in. (0.61 by 1.24 m) by min 0.060 in. (1.5 mm) thick steel grease duct. One steel grease duct to be installed either concentrically or eccentrically within the firestop system. Duct to rigidly supported on both sides of floor or wall assembly.

3. Firestop System — The firestop system shall consist of the following:

A. Packing Material — Min 4 in. (102 mm) thickness of unfaced scrap duct wrap material or min 3 pcf (48 kg/m<sup>3</sup>) mineral wool batt insulation firmly packed into opening as a permanent form between the bare steel duct and the periphery of the opening. Packing material to be recessed from the top surface of the floor or both surfaces of wall as required to accommodate the required thickness of fill material.

B. Fill, Void or Cavity Materials\* — Sealant — Min 1/4 in. (6 mm) thickness of fill material applied within the annulus, flush with top surface of floor or both surfaces of wall.

HILTI CONSTRUCTION CHEMICALS, DIV OF HILTI INC — CFS-S SIL GG or CFS-S SIL SL (for floor assemblies only)

C. Duct Wrap Materials\* — Nom 1-1/2 in. (38 mm) thick, 6 pcf (96 kg/m<sup>3</sup>) ceramic blanket totally encapsulated within foil-scrim facers. The steel duct shall be wrapped with two layers of duct wrap installed per HNKT.G-18 and in accordance with the manufacturer's installation instructions. The duct wrap shall be tightly butted to the floor or wall on both sides of the assembly. All cut edges and ends shall be sealed with 3 in. (76 mm) wide pressure sensitive aluminum foil tape.

THERMAL CERAMICS INC — FireMaster FastWrap+, FireMaster FastWrap XL, or Pyroscat Duct Wrap XL.

D. Steel Banding Straps — Min 1/2 in. (13 mm) wide by 0.015 in. (0.38 mm) thick carbon steel banding straps used in conjunction with min 1 in. (25 mm) long stainless steel crimp clips. Banding straps spaced a max 12 in. (305 mm) OC and 1-1/2 in. (38 mm) from transverse joints of duct wrap.

\*Bearing the UL Classification Mark



Hilti Firestop Systems

Reproduced by HILTI, Inc. Courtesy of  
Underwriters Laboratories, Inc.

January 17, 2014