

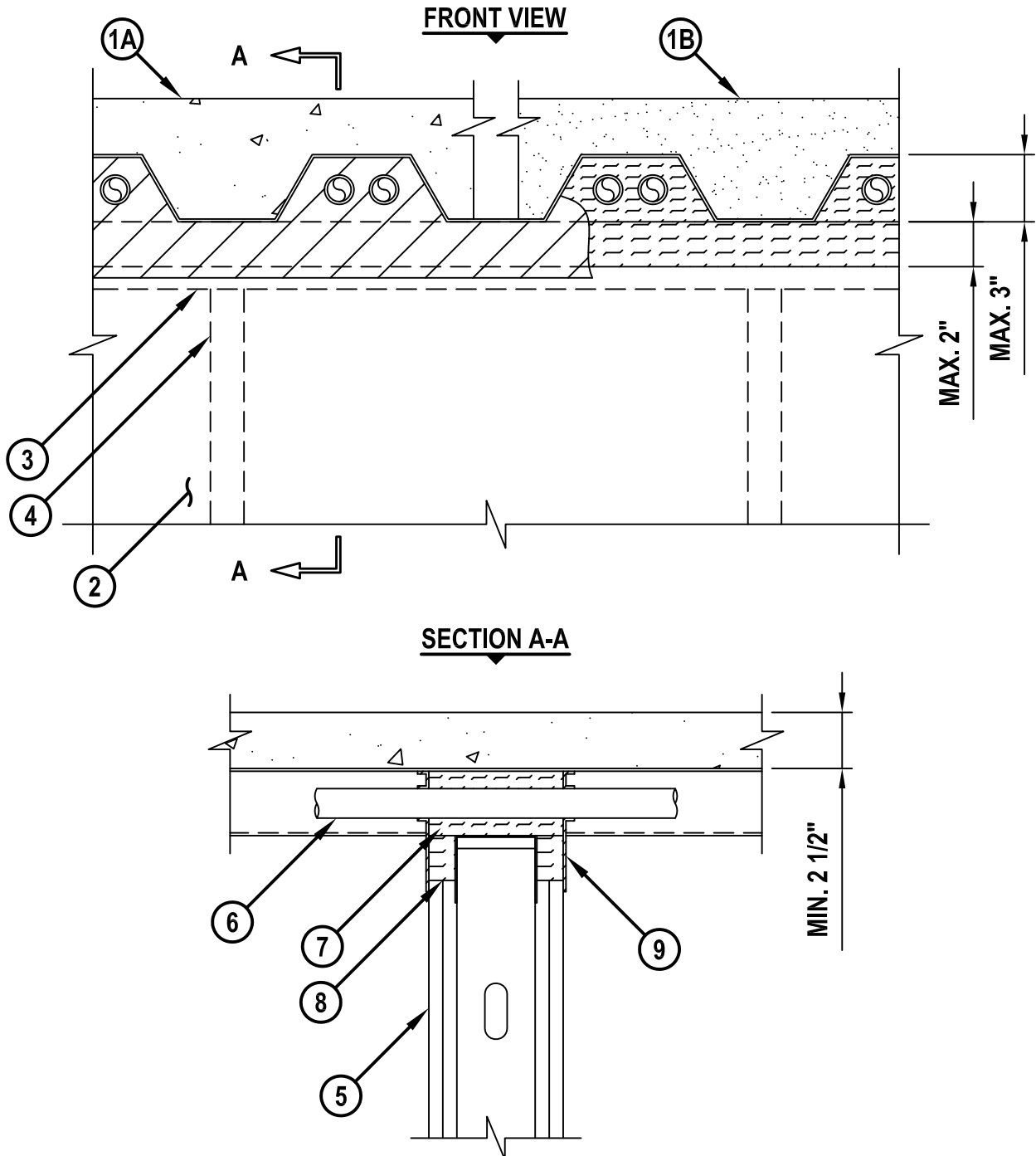
TOP OF WALL JOINT : GYPSUM WALL ASSEMBLY

F AND FH-RATINGS = 1-HR. OR 2-HR.

FT AND FTH-RATINGS = 0-HR.

CLASS II AND III MOVEMENT CAPABILITIES - 20% COMPRESSION OR EXTENSION, OR
CLASS II MOVEMENT CAPABILITIES - 20% COMPRESSION OR 12.5% EXTENSION (SEE NOTE NO. 6)

cUL HWD0003b.070110



TOP OF WALL JOINT : GYPSUM WALL ASSEMBLY

F AND FH-RATINGS = 1-HR. OR 2-HR.

FT AND FTH-RATINGS = 0-HR.

CLASS II AND III MOVEMENT CAPABILITIES - 20% COMPRESSION OR EXTENSION, OR
CLASS II MOVEMENT CAPABILITIES - 20% COMPRESSION OR 12.5% EXTENSION (SEE NOTE NO. 6)

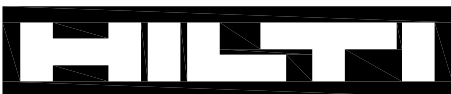
cUL HWD0003b.070110

1. FLOOR OR ROOF ASSEMBLY (2-HR. FIRE-RATING) :

- A. LIGHTWEIGHT OR NORMAL WEIGHT CONCRETE FLOOR (MIN. 2-1/2" THICK) OVER METAL DECKING.
- B. INSULATING CONCRETE (MIN. 2-1/4" THICK) OVER METAL DECKING (UL/cUL CLASSIFIED P900 SERIES).
- C. [NOT SHOWN] FLUTED STEEL ROOF DECK WITH SPRAY-APPLIED FIREPROOFING (UL/cUL CLASSIFIED P700 SERIES).

- 2. GYPSUM WALL ASSEMBLY (UL/cUL CLASSIFIED U400 OR V400 SERIES) (1-HR. OR 2-HR. FIRE-RATING).
- 3. CEILING RUNNER FASTENED TO UNDERSIDE OF DECK AT MAXIMUM 24" C/C SPACING.
- 4. STEEL STUDS (MINIMUM 3-1/2" WIDE), CUT 1/2" TO 1" LESS IN LENGTH THAN ASSEMBLY HEIGHT, NESTING IN CEILING RUNNER WITHOUT ATTACHMENT.
- 5. 5/8" OR 1-1/4" THICKNESS GYPSUM WALLBOARD AS SPECIFIED IN THE INDIVIDUAL UL DESIGN. TOP ROW OF SCREWS SHALL BE INSTALLED INTO STUDS 1" BELOW THE BOTTOM OF CEILING RUNNER.
- 6. [OPTIONAL] MAXIMUM 1-1/2" NOMINAL DIAMETER STEEL CONDUIT OR EMT (MAX. QTY. = 2 PER FLUTE).
- 7. HILTI CP 777 SPEED PLUGS FRICTION FITTED TO COMPLETELY FILL FLUTE, FLUSH WITH BOTH SIDES OF WALL (SEE NOTE NO. 5 BELOW).
- 8. HILTI CP 767 SPEED STRIPS COMPRESSED 50% AND INSERTED INTO JOINT, FLUSH WITH BOTH SIDES OF GYPSUM WALL (SEE NOTE NO. 5 BELOW).
- 9. MINIMUM 1/8" (WET) THICKNESS HILTI CFS-SP WB FIRESTOP JOINT SPRAY OR HILTI CP 672 SPEED SPRAY TO COMPLETELY COVER MINERAL WOOL, OVERLAPPING MINIMUM 1/2" ONTO GYPSUM WALL, STEEL CONDUIT OR EMT, AND METAL DECK.

- NOTES :**
- 1. STEEL FLOOR UNITS MAY BE SPRAYED WITH A MINIMUM 5/16" THICKNESS TO MAXIMUM 1-3/4" THICKNESS OF UL CLASSIFIED MONOKOTE TYPE MK-6/HY (MANUFACTURED BY W.R. GRACE) OR TYPE 300 (MANUFACTURED BY ISOLATEK, INT.) FIREPROOFING PRIOR TO INSTALLATION OF CEILING RUNNERS.
 - 2. WHEN THE STEEL DECK IS COATED WITH FIREPROOFING, HILTI FIRESTOP SPRAY SHALL OVERLAP THE WALL MINIMUM 1/2" AND OVERLAP THE FIREPROOFING MINIMUM 2" ON BOTH SIDES OF GYPSUM WALL ASSEMBLY.
 - 3. ANNULAR SPACE BETWEEN PENETRANTS (LARGER THAN 1/2" NOMINAL DIAMETER) AND METAL DECK = MINIMUM 1/2".
 - 4. ANNULAR SPACE BETWEEN PENETRANTS = MINIMUM 1/2".
 - 5. AS AN ALTERNATE TO HILTI CP 767 SPEED STRIPS, AND/OR CP 777 SPEED PLUGS, MINERAL WOOL (MIN. 4 PCF DENSITY) COMPRESSED 50% MAY BE USED.
 - 6. MOVEMENT CAPABILITIES ARE 20% COMPRESSION AND 12.5% EXTENSION WHEN TYPE 300 FIREPROOFING IS USED.

**Hilti Firestop Systems**

HILTI, Inc.
Tulsa, Oklahoma USA (800) 879-8000

Sheet 2 of 2

Scale -

Date July 01, 2010

Drawing No.

cUL
HWD0003b
Saving Lives through Innovation and Education