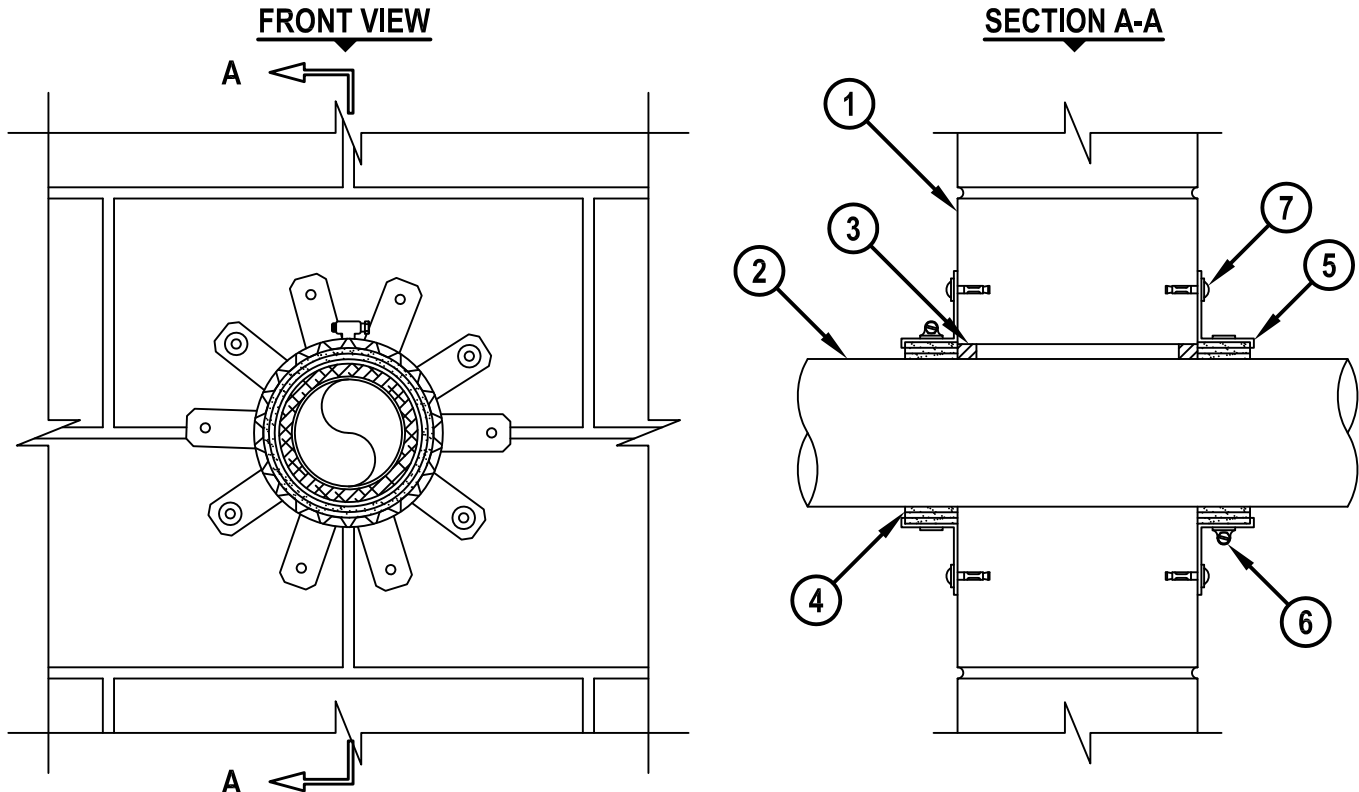


PLASTIC PIPE THROUGH CONCRETE WALL OR BLOCK WALL ASSEMBLY

F, FT, FH AND FTH-RATINGS = 2-HR.

cUL-WJ2029b.011615



1. CONCRETE WALL ASSEMBLY (2-HR. FIRE-RATING) :
 - A. LIGHTWEIGHT OR NORMAL WEIGHT CONCRETE WALL (MINIMUM 6" THICK).
 - B. ANY UL/cUL CLASSIFIED CONCRETE BLOCK WALL.
2. PENETRATING ITEM TO BE ONE OF THE FOLLOWING :
 - A. MAXIMUM 4" NOMINAL DIAMETER POLYPROPYLENE (PP) SDR 11 PLASTIC PIPE (CLOSED PIPING SYSTEM ONLY).
 - B. MAXIMUM 125mm FUSIOTHERM® (SDR 11 OR SDR 7.4 WITH FASER) PP PLASTIC PIPE MANUFACTURED BY AQUATHERM, INC. (CLOSED PIPING SYSTEM ONLY).
3. MINIMUM 5/8" DEPTH HILTI FS-ONE MAX OR FS-ONE INTUMESCENT FIRESTOP SEALANT FLUSH WITH EACH SIDE OF WALL.
4. HILTI CP 648E WRAP STRIP (NOMINAL 3/16" THICK x 1-3/4" WIDE) CONTINUOUSLY WRAPPED AROUND THE OUTER CIRCUMFERENCE OF THE PIPE, COVERING THREE TIMES, WITH ENDS BUTTED AND HELD IN PLACE WITH TAPE. WRAP STRIP TO BE BUTTED TIGHTLY AGAINST BOTH SURFACES OF WALL.
5. HILTI 1-3/4" RETAINING COLLAR WRAPPED OVER THE WRAP STRIPS, OVERLAPPING MINIMUM 1".
6. HILTI COLLAR CLAMP FASTENED AT MID-HEIGHT OF RETAINING COLLAR.
7. MINIMUM 4 TABS OF RETAINING COLLAR (SYMMETRICALLY SPACED) SECURED TO BOTH SIDES OF WALL WITH 1/4" DIAMETER STEEL EXPANSION BOLTS WITH 3/4" DIAMETER STEEL WASHERS.

NOTES : 1. MAXIMUM DIAMETER OF OPENING = 5-1/2".
2. ANNULAR SPACE = MINIMUM 0", MAXIMUM 1/2".



HILTI, Inc.
Tulsa, Oklahoma USA (800) 879-8000

Sheet	1 of 1
Scale	5/32" = 1"
Date	Jan. 16, 2015

Drawing No.

cUL
WJ2029b

Saving Lives through Innovation and Education