

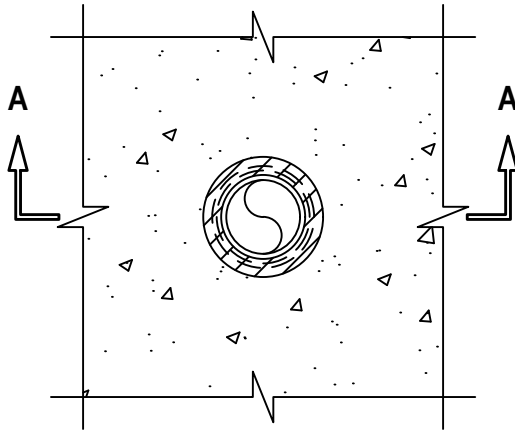
PLASTIC PIPE THROUGH CONCRETE FLOOR/WALL OR BLOCK WALL ASSEMBLY

F AND FH-RATINGS = 2-HR. OR 3-HR.

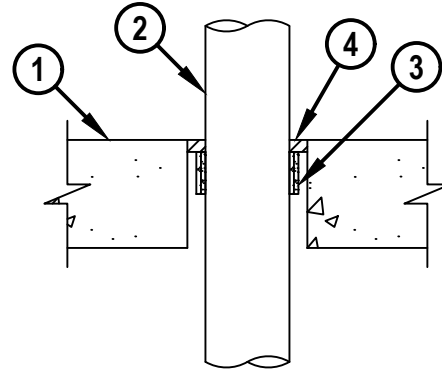
FT AND FTH-RATINGS = 0-HR.

NOTE : TESTED WITH A 50 Pa PRESSURE DIFFERENTIAL

TOP VIEW



SECTION A-A



1. CONCRETE FLOOR OR WALL ASSEMBLY (2-HR. OR 3-HR. FIRE-RATING) :
 - A. LIGHTWEIGHT OR NORMAL WEIGHT CONCRETE FLOOR (MINIMUM 4-1/2" THICK).
 - B. ANY UL/cUL CLASSIFIED CONCRETE BLOCK WALL.
2. MAXIMUM 3" NOMINAL DIAMETER XFR 15/50 PVC PLASTIC PIPE (SCHEDULE 40) (SOLID CORE) (CLOSED OR VENTED PIPING SYSTEM).
3. HILTI CP 648E WRAP STRIP (NOMINAL 3/16" THICK x 1-3/4" WIDE) CONTINUOUSLY WRAPPED AROUND THE OUTER CIRCUMFERENCE OF THE PIPE, IN ACCORDANCE WITH TABLE BELOW, WITH ENDS BUTTED AND HELD IN PLACE WITH TAPE. WRAP STRIP RECESSED 1/2" FROM TOP SIDE OF FLOOR, OR BOTH SURFACES OF WALL. FOR 2-HR. FIRE-RATING, WRAP STRIP TO BE SINGLE STACK. FOR 3-HR. FIRE-RATING, WRAP STRIP TO BE DOUBLE STACKED.
4. MINIMUM 1/2" DEPTH HILTI FS-ONE MAX INTUMESCENT FIRESTOP SEALANT OR HILTI CFS-S SIL GG FIRESTOP SILICONE SEALANT (SEE TABLE BELOW).

MAX PIPE DIAM	F-RATING, HR	FH-RATING, HR	WRAP STRIP	SEALANT	MAX OPENING DIAM	ANNULAR SPACE
2 IN.	2	2	ONE LAYER, SINGLE STACK	FS-ONE MAX	3 IN.	MIN 3/16 IN.
2 IN.	3	3	ONE LAYER, DOUBLE STACKED	FS-ONE MAX	3 IN.	MIN. 3/16 IN.
3 IN.	2	0	TWO LAYERS, SINGLE STACK	FS-ONE MAX, CFS-S SIL GG	5 IN.	MIN. 1/2"

NOTE : HILTI CP 648E FIRESTOP WRAP STRIP STRIPS AND HILTI FS-ONE MAX INTUMESCENT FIRESTOP SEALANT OR HILTI CFS-S SIL GG FIRESTOP SILICONE SEALANT ARE REQUIRED ON BOTH SIDES OF A WALL.



Hilti Firestop Systems

HILTI, Inc.
Plano, Texas USA (800) 879-8000

Sheet 1 of 1
Scale 1/8" = 1"
Date Feb. 08, 2017

Drawing No.

cUL
CAJ2684d

Saving Lives through Innovation and Education