

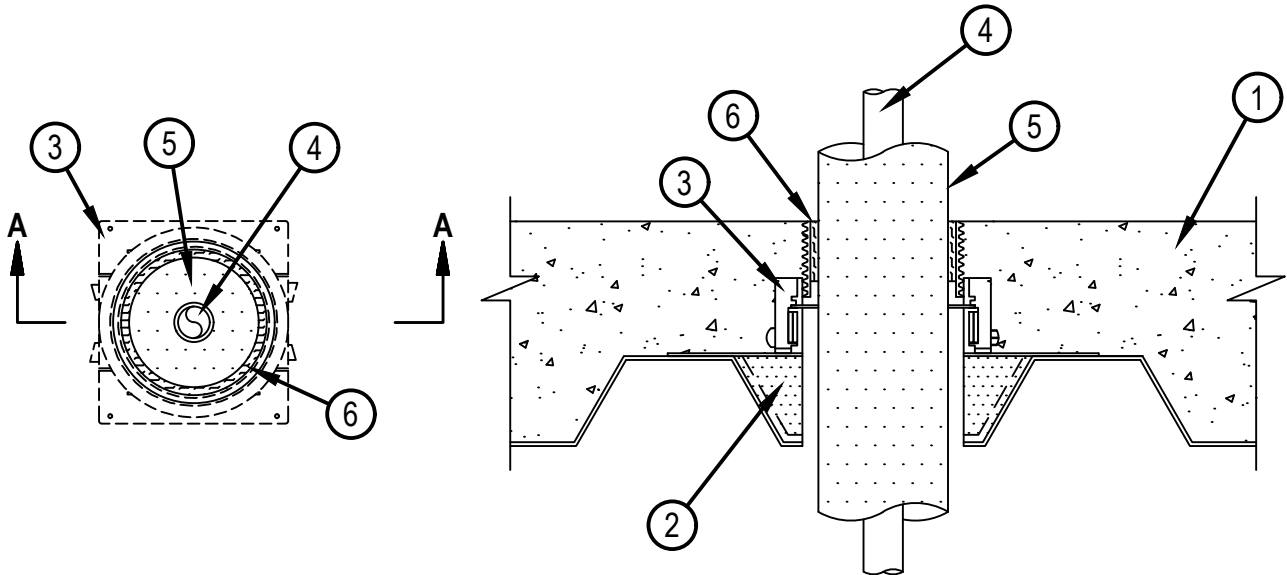


Classified by  
Underwriters Laboratories, Inc.  
to UL 1479 and CAN/ULC-S115

## System No. F-A-5071

ANSI/UL1479 (ASTM E814)	CAN/ULC S115
F Rating — 2 Hr	F Rating — 2 Hr
T Rating — 2 Hr	FT Rating — 2 Hr
	FH Rating — 2 Hr
	FTH Rating — 2 Hr

FA 5071



**SECTION A-A**

1. Floor Assembly — The fire rated unprotected concrete and steel floor assembly shall be constructed of the materials and in the manner specified in the individual D900 Series designs in the UL Fire Resistance Directory and as summarized below:

A. Concrete — Min 4-1/2 in. (114 mm) thick reinforced lightweight or normal weight (100-150 pcf or 1600-2400 kg/m<sup>3</sup>) concrete.

B. Steel Floor and Form Units\* — Max 3 in. (76 mm) deep galv steel fluted units as specified in the individual Floor-Ceiling Design.

2. Firestop Device\* — Cast in place firestop device platform installed prior to concrete placement in floor assembly. The CFS-CID MD PLT firestop device platform is screwed to the fluted deck with one fastener at each corner in accordance with manufacturer installation instructions. The firestop device platform is sized for nominal 2 and 3 in. (51 and 76 mm) deep fluted decks.

HILTI CONSTRUCTION CHEMICALS, DIV OF HILTI INC — CFS-CID MD PLT W2" and W3"

2a. As an alternative to item 2, for CFS-CID MD P only, HILTI Metal Deck Adapter may be installed in accordance with the manufacturer's instructions. When Metal Deck Adapter is used CFS-CID MD PLT is not to be installed.

3. Firestop Device\* — Cast in place firestop device installed over firestop device platform or installed with Metal Deck Adapter (Item 2a) prior to concrete placement in floor assembly. When installed on device platform (Item 2) the CFS-CID MD Firestop Device is set onto and screwed to the device platform in accordance with manufacturer installation instructions. When installed with Metal Deck Adapter (Item 2a) install in accordance with manufacturer installation instructions. The firestop device is sized for the diameter of the through penetrant and for the height of the concrete topping over the fluted deck. The device shall be used with Hilti provided extension to accommodate installation flush with top of floor. Device is to be trimmed flush with the top surface of the floor.

HILTI CONSTRUCTION CHEMICALS, DIV OF HILTI INC — CFS-CID MD P 4"/2.5" and CFS-CID MD P 4"/4", CFS-CID MD PX 4"/2.5" and CFS-CID MD PX 4"/4"

4. Through Penetrants — One metallic pipe or tubing to be installed within the firestop device. Pipe or tubing to be rigidly supported on both sides of floor assembly. The following types of pipe or tubing may be used:

A. Steel Pipe — Nom 1 in. (25 mm) diam (or smaller) Schedule 10 (or heavier) steel pipe.

B. Copper Tubing — Nom 1 in. (25 mm) diam (or smaller) Type L (or heavier) copper tubing.

C. Copper Pipe — 1 in. (25 mm) diam (or smaller) Regular (or heavier) copper pipe.

The firestop device and metallic penetrant shall be sized as follows :

Nom Pipe Diameter, in. (mm)	Pipe Insulation (Item 5)	Firestop Device	Packing Material (Item 6)
1/2 (13)	1-1/2 in. (38 mm)	CFS-CID MD P(X) 4"	Yes
1 (25)	1-1/2 in. (38 mm)	CFS-CID MD P(X) 4"	No

5. Pipe Covering\* — Cellular Glass Insulation — Nom 1-1/2 in. (38 mm) thick cellular glass units sized to the outside diam of the pipe and supplied in nom 24 in. (610 mm) long half sections or nom 18 in. (457 mm) long segments.

5A. Sheathing Material\* — Foil-scrim-kraft or all service jacket material shall be wrapped around the outer circumference of the pipe insulation (Item 4) with the kraft side exposed. Longitudinal joints and transverse joints sealed with metal fasteners or butt tape.

See Sheathing Materials (BVDV) category in the Building Materials Directory for names of manufacturers. Any sheathing material meeting the above specifications and bearing the UL Classification Marking with a Flame Spread Index of 25 or less and a Smoke Developed Index of 50 or less may be used.

6. Packing Material — When specified in the Table in Item 4, a min 2 in. (51 mm) thickness of min 4 pcf (64 kg/m<sup>3</sup>) mineral wool batt insulation shall be firmly packed into the top of device above the smoke seal gasket, flush with the top of the device.

\* Indicates such products shall bear the UL or cUL Certification Mark for jurisdictions employing the UL or cUL Certification (such as Canada), respectively.



**Hilti Firestop Systems**

Reproduced by HILTI, Inc. Courtesy of  
Underwriters Laboratories, Inc.  
September 04, 2025