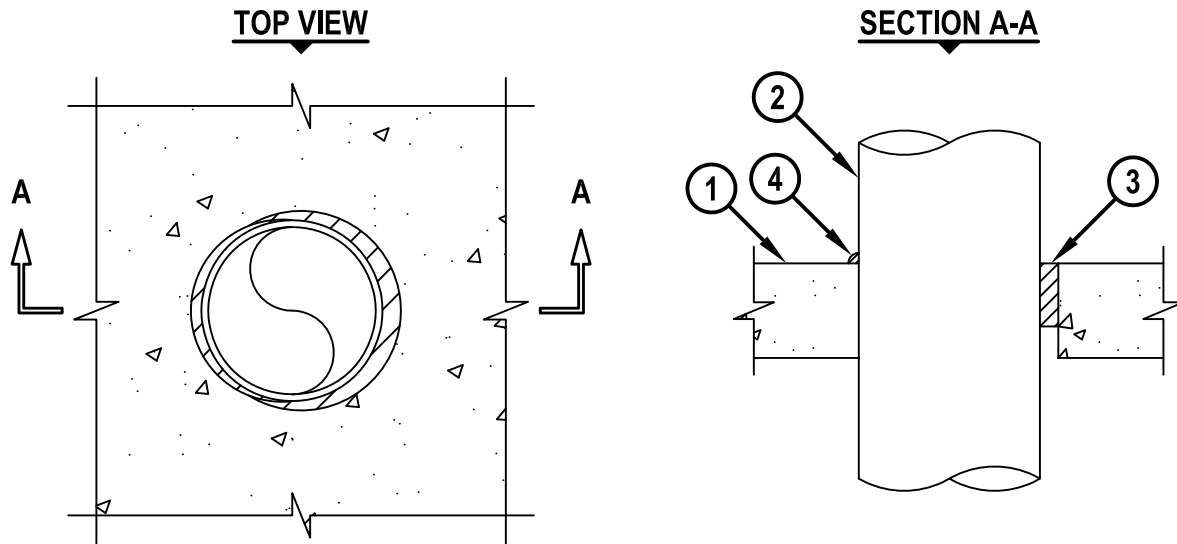


METAL PIPE THROUGH CONCRETE FLOOR/WALL OR BLOCK WALL ASSEMBLY

F-RATING = 2-HR.

T-RATING = 0-HR.

CAJ1664a.021016



1. CONCRETE FLOOR OR WALL ASSEMBLY (2-HR. FIRE-RATING) :
 - A. LIGHTWEIGHT OR NORMAL WEIGHT CONCRETE FLOOR OR WALL (MINIMUM 4-1/2" THICK).
 - B. ANY UL/cUL CLASSIFIED PRECAST (HOLLOW-CORE) CONCRETE FLOOR (MINIMUM 6" THICK).
 - C. ANY UL/cUL CLASSIFIED CONCRETE BLOCK WALL.
2. PENETRATING ITEM TO BE ONE OF THE FOLLOWING :
 - A. MAXIMUM 8" NOMINAL DIAMETER STEEL PIPE (SCHEDULE 10 OR HEAVIER).
 - B. MAXIMUM 8" NOMINAL DIAMETER CAST OR DUCTILE IRON PIPE.
 - C. MAXIMUM 4" NOMINAL DIAMETER COPPER PIPE OR TUBING.
 - D. MAXIMUM 6" NOMINAL DIAMETER STEEL CONDUIT.
 - E. MAXIMUM 4" NOMINAL DIAMETER EMT.
3. MINIMUM 3" DEPTH HILTI CP 660 FIRESTOP FOAM APPLIED ANYWHERE WITHIN THE THICKNESS OF THE FLOOR.
4. MINIMUM 1/2" BEAD HILTI CP 660 FIRESTOP FOAM APPLIED AT POINT OF CONTACT ON TOP SURFACE OF FLOOR.

NOTES : 1. MAXIMUM DIAMETER OF OPENING = 9-1/2" (7" FOR PRECAST (HOLLOW-CORE) CONCRETE FLOORS).

2. ANNULAR SPACE = MINIMUM 0", MAXIMUM 7/8".

3. WHEN PRECAST (HOLLOW-CORE) UNITS ARE USED, HILTI CP 660 FIRESTOP FOAM TO BE APPLIED FLUSH WITH BOTTOM SURFACE OF FLOOR.

4. MINIMUM 3" DEPTH HILTI CP 660 FIRESTOP FOAM APPLIED FLUSH WITH BOTH SURFACES OF WALL EXCEPT THAT IN SOLID BLOCK/CONCRETE WALLS, HILTI CP 660 MAY BE APPLIED FLUSH WITH EITHER SIDE OR ANYWHERE WITHIN THE THICKNESS OF THE WALL.



HILTI, Inc.
Plano, Texas USA (800) 879-8000

Sheet	1 of 1
Scale	7/64" = 1"
Date	Feb. 10, 2016

Drawing No.

CAJ
1664a

Saving Lives through Innovation and Education