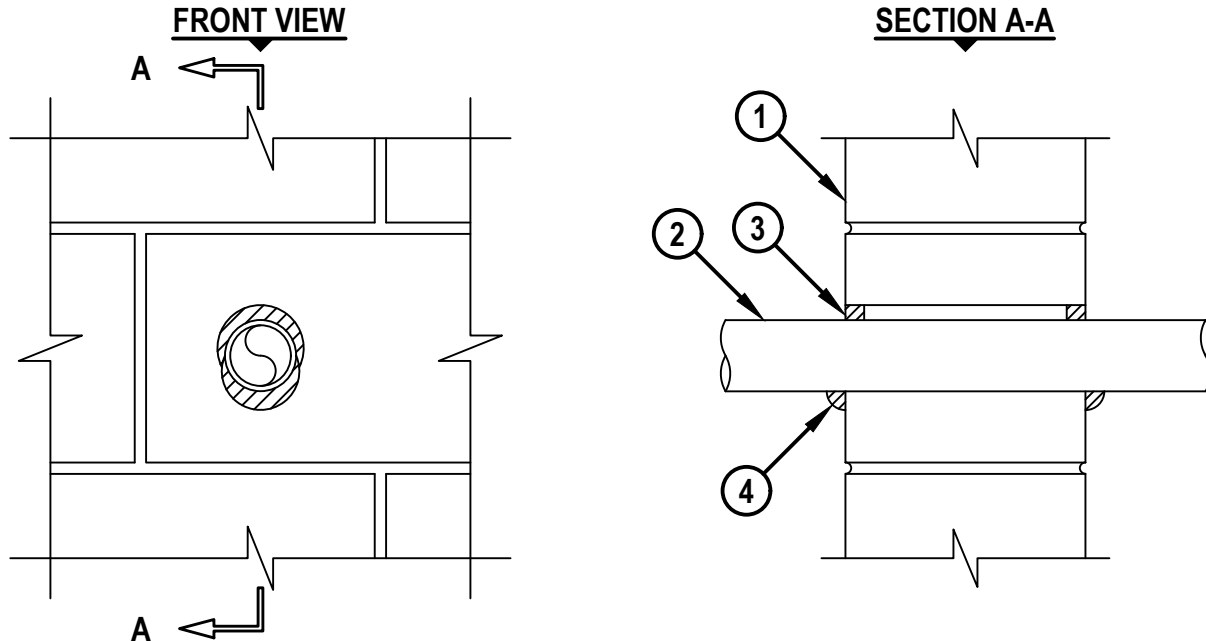


PLASTIC PIPE THROUGH CONCRETE WALL OR CONCRETE BLOCK WALL ASSEMBLY

F-RATING = 2-HR.
FT-RATING = 0-HR.
FH-RATING = 2-HR.
FTH-RATING = 0-HR.

L-RATING AT AMBIENT = LESS THAN 5.1 L / S / M²
L-RATING AT 400°F = LESS THAN 20.4 L / S / M²

cUL WJ2333a.091117



SYSTEM TESTED WITH A PRESSURE DIFFERENTIAL OF 2.5 Pa BETWEEN THE EXPOSED AND THE UNEXPOSED SURFACES WITH THE HIGHER PRESSURE ON THE EXPOSED SIDE.

1. CONCRETE WALL ASSEMBLY (2-HR. FIRE-RATING) :
 - A. LIGHTWEIGHT OR NORMAL WEIGHT CONCRETE WALL (MINIMUM 6" THICK).
 - B. ANY UL/cUL CLASSIFIED CONCRETE BLOCK WALL.
2. MAXIMUM 2" NOMINAL DIAMETER BLAZEMASTER® CPVC PLASTIC PIPE (SDR 13.5) (CLOSED PIPING SYSTEM ONLY).
3. MINIMUM 5/8" DEPTH HILTI FS-ONE MAX INTUMESCENT FIRESTOP SEALANT.
4. MINIMUM 5/8" BEAD HILTI FS-ONE MAX INTUMESCENT FIRESTOP SEALANT APPLIED AT POINT OF CONTACT.

**NOTES : 1. DIAMETER OF OPENING TO BE 1" LARGER THAN OUTSIDE DIAMETER OF THE PENETRANT.
2. ANNULAR SPACE = MINIMUM 0", MAXIMUM 1/2".**

FBC™ System Compatible indicates that this product has been tested, and is monitored on an ongoing basis, to assure its chemical compatibility with BlazeMaster® pipe and fittings.

FBC™ and BlazeMaster® are licensed trademarks of the Lubrizol Corporation.



HILTI, Inc.
Plano, Texas USA (800) 879-8000

Sheet	1 of 1
Scale	5/32" = 1"
Date	Sep. 11, 2017

Drawing No.
cUL
WJ2333a