



Classified by
Underwriters Laboratories, Inc.
to CAN/ULC-S115

System No. W-L-2047

F Ratings — 1 and 2 Hr (See Item 1)

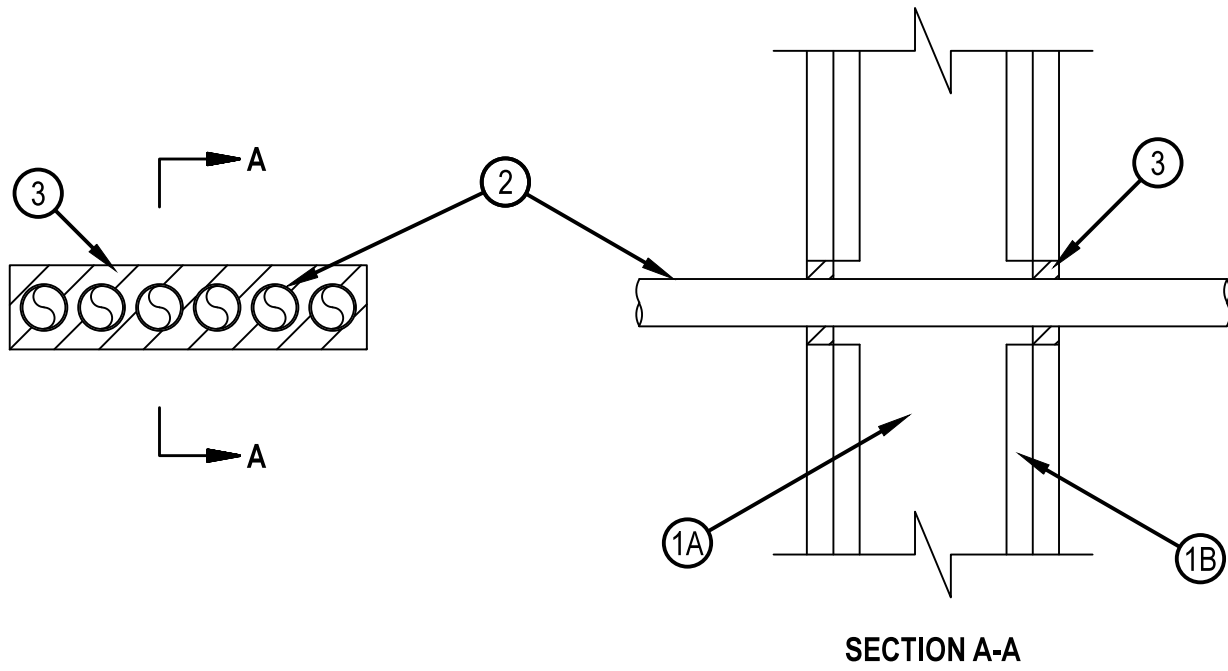
FT Rating — 0 Hr

FH Rating — 0 Hr

FTH Rating — 0 Hr



WL 2047



1. Wall Assembly — The 1 or 2 hr fire rated gypsum board/stud wall assembly shall be constructed of the materials and in the manner specified in the individual U300, U400, V400 or W400 Series Wall and Partition Designs in the UL Fire Resistance Directory and shall include the following construction features:
 - A. Studs — Wall framing may consist of either wood studs or steel channel studs. Wood studs to consist of nom 51 by 102 mm lumber spaced max 406 mm OC. Steel studs to be min 89 mm wide and spaced max 610 mm OC.
 - B. Gypsum Board* — One or two layers of gypsum board, as specified in the individual Wall and Partition Design. Max area of opening 110 cm² with a max dimension of 216 mm.

The hourly F Rating of the firestop system is equal to the hourly rating of the wall assembly in which it is installed.
 2. Crosslinked Polyethylene (PEX) Tubing — Max six nom 25 mm diam (or smaller) SDR 9 PEX tubing for use in closed (process or supply) piping systems, installed either concentrically or eccentrically within the firestop system. The annular space between the tubing and the edge of the opening shall be min 16 mm to max 25 mm. Separation between tubes shall be min 6 mm. Tubing to be rigidly supported on both sides of wall assembly.
 3. Fill, Void or Cavity Materials* — Sealant — Min 16 mm thickness of thickness of sealant applied within annular space, flush with both surfaces of wall.
HILTI CONSTRUCTION CHEMICALS, DIV OF HILTI INC — FS-ONE Sealant or FS-ONE MAX Intumescent Sealant
- * Indicates such products shall bear the UL or cUL Certification Mark for jurisdictions employing the UL or cUL Certification (such as Canada), respectively.



Hilti Firestop Systems

Reproduced by HILTI, Inc. Courtesy of
Underwriters Laboratories, Inc.
January 26, 2015