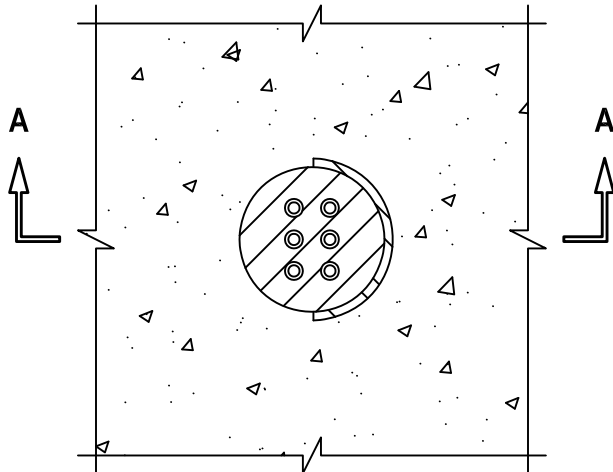


CABLES THROUGH PVC SLEEVE IN CONCRETE FLOOR/WALL OR BLOCK WALL

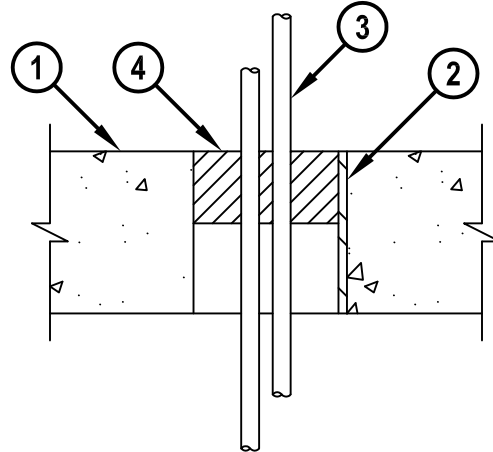
F-RATING = 3-HR.
T-RATING = 2-1/2-HR.

CAJ3084e.011515

TOP VIEW



SECTION A-A



1. CONCRETE FLOOR OR WALL ASSEMBLY (3-HR FIRE-RATING) :
 - A. LIGHTWEIGHT OR NORMAL WEIGHT CONCRETE FLOOR OR WALL (MINIMUM 4-1/2" THICK).
 - B. ANY UL/cUL CLASSIFIED CONCRETE BLOCK WALL.
2. [OPTIONAL] MAXIMUM 4" NOMINAL DIAMETER PVC SLEEVE (SCHEDULE 40, SOLID CORE).
3. SIX TELEPHONE CABLES (MAXIMUM 25 PAIR NO. 24 AWG WITH PVC INSULATION AND JACKETING).
4. MINIMUM 2" DEPTH HILTI FS-ONE MAX OR FS-ONE INTUMESCENT FIRESTOP SEALANT.

NOTES : 1. MAXIMUM DIAMETER OF OPENING = 4-1/2".
 2. ANNULAR SPACE BETWEEN AND AROUND CABLES = MINIMUM 1/4", MAXIMUM 1-1/4".
 3. MINERAL WOOL MAY BE USED AS A TEMPORARY FORM.
 4. MINIMUM 2" DEPTH HILTI FS-ONE MAX OR FS-ONE INTUMESCENT FIRESTOP SEALANT IS REQUIRED ON BOTH SIDES OF A WALL ASSEMBLY.



HILTI, Inc.
Tulsa, Oklahoma USA (800) 879-8000

Sheet	1 of 1
Scale	3/16" = 1"
Date	Jan. 15, 2015

Drawing No.
**CAJ
3084e**