



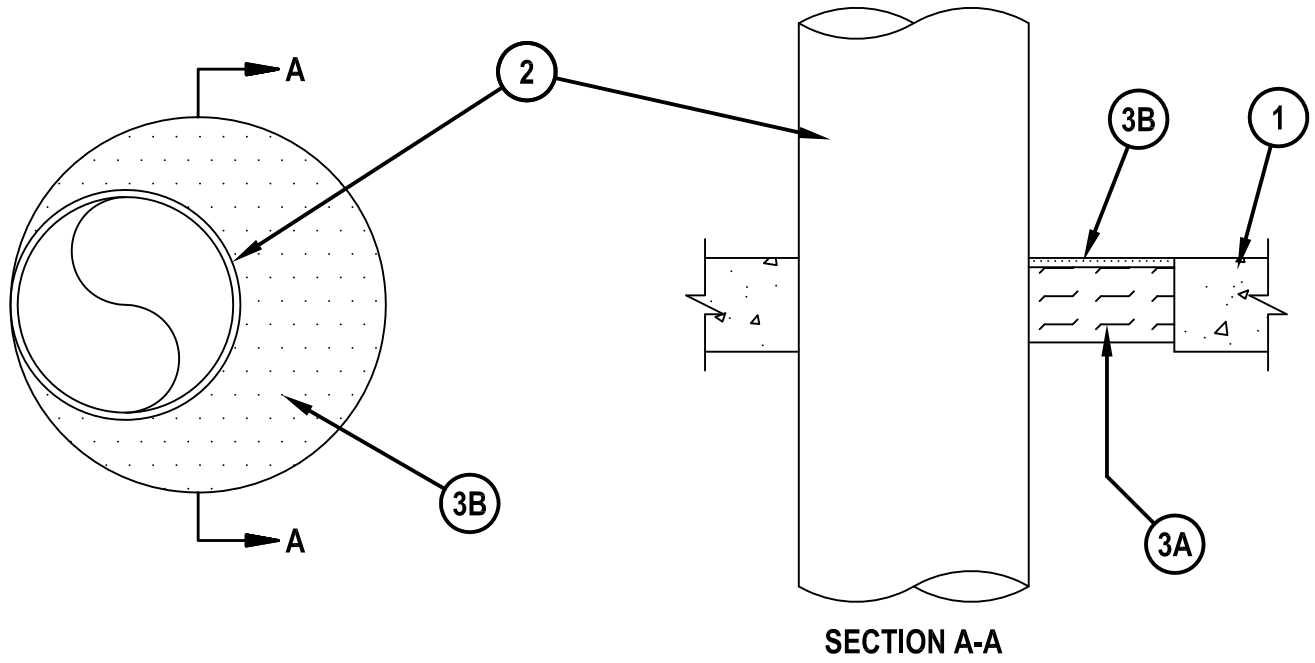
Classified by  
Underwriters Laboratories, Inc.  
to CAN/ULC-S115

## System No. F-A-1004

F Rating — 2 Hr  
FT Rating — 0 Hr  
FH Rating — 0 Hr  
FTH Rating — 0 Hr



FA 1004



1. Floor Assembly — Min 64 mm (2-1/2 in.) thick reinforced lightweight or normal weight 1600-2400 kg/m<sup>3</sup> (100-150 pcf) concrete. Max diam of opening is 711 mm (28 in.)
2. Metallic Pipes — One metallic pipe, conduit or tubing to be installed eccentrically or concentrically within the firestop system. The annular space between the pipe, conduit or tubing and the periphery of the opening shall be min 0 in. (point contact) to max 9-3/8 in. Pipe, conduit or tubing to be rigidly supported on both sides of the floor assembly. The following types and sizes of metallic pipes, conduits and tubing may be used:
  - A. Steel Pipe — Nom 152 mm (6 in.) diam (or smaller) Schedule 10 (or heavier) steel pipe.
  - B. Copper Tube — Nom 152 mm (6 in.) diam (or smaller) Type L (or heavier) copper tube.
  - C. Copper Pipe — Nom 152mm (6 in.) diam (or smaller) Regular (or heavier) copper pipe.
  - D. Conduit — Nom 102 mm (4 in.) diam (or smaller) steel electrical metallic tubing or nom 152mm (6 in.) diam (or smaller) rigid galv steel conduit.
  - E. Iron Pipe — Nom 152 mm (6 in.) diam (or smaller) cast iron or ductile iron pipe.
3. Firestop System — The firestop system shall consist of the following:
  - A. Packing Material — Min 51 mm (2 in.) thickness of min 64 kg/m<sup>3</sup> (4.0 pcf) mineral wool batt insulation tightly packed into opening as a permanent form. Packing material to be recessed from top surface of floor as required to accommodate the required thickness of fill material.
  - B. Fill, Void or Cavity Material\* — Sealant — Min 6 mm (1/4 in.) thickness of fill material applied within the annulus, flush with the top surface of floor.

HILTI CONSTRUCTION CHEMICALS, DIV OF HILTI INC — CP 604 Self-Leveling Firestop Sealant, CFS-S SIL GG or CFS-S SIL SL Sealant

\*Bearing the UL Classification Mark



**Hilti Firestop Systems**

Reproduced by HILTI, Inc. Courtesy of  
Underwriters Laboratories, Inc.  
December 26, 2013