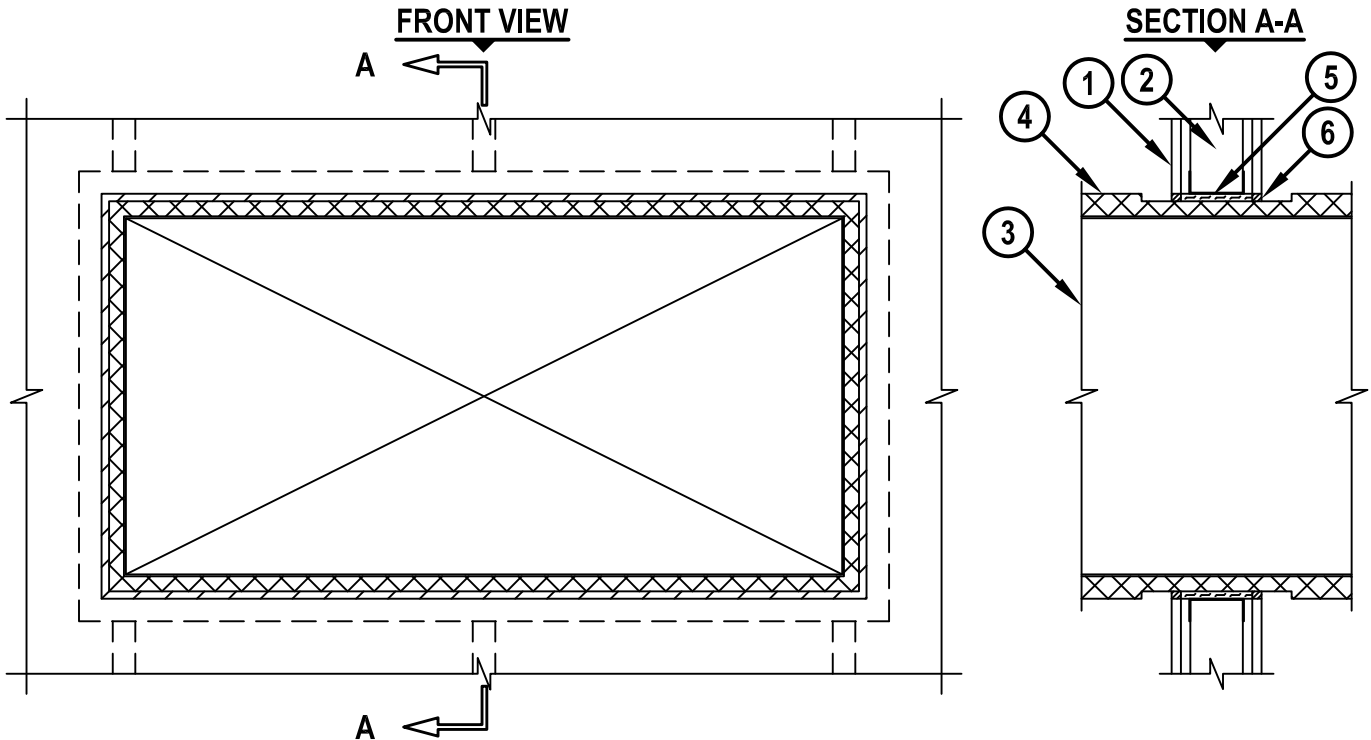


INSULATED SHEET METAL DUCT THROUGH GYPSUM WALL ASSEMBLY

F-RATING = 1-HR. OR 2-HR.

FT-RATING = 1/4-HR.

FH AND FTH-RATINGS = 0-HR.



cUL WL7007b.011715

1. GYPSUM WALL ASSEMBLY (UL/cUL CLASSIFIED U300, U400, OR V400 SERIES) (1-HR. OR 2-HR. FIRE-RATING) (2-HR. SHOWN).
2. [NOT SHOWN] WOOD STUDS TO CONSIST OF NOMINAL 2" x 4" LUMBER. STEEL STUDS TO BE MINIMUM 3-1/2" WIDE. OPENING TO BE FRAMED OUT WITH STUD MATERIAL.
3. MAXIMUM 48" x 24" RECTANGULAR SHEET METAL DUCT (MIN. 26 GA.).
4. MAXIMUM 1-1/2" THICK GLASS-FIBER DUCT INSULATION (MIN. 3/4 PCF) WITH FOIL-SCRIM-KRAFT FACING (SEE NOTE NO. 2 BELOW).
5. MINIMUM 3-1/2" THICKNESS MINERAL WOOL (MIN. 4 PCF DENSITY) TIGHTLY PACKED, RECESSED TO ACCOMMODATE SEALANT.
6. MINIMUM 5/8" DEPTH HILTI FS-ONE MAX OR FS-ONE INTUMESCENT FIRESTOP SEALANT.

NOTES : 1. MAXIMUM SIZE OF OPENING = 51" x 27".
 2. INSULATION TO BE COMPRESSED 50% SUCH THAT THE ANNULAR SPACE = MINIMUM 1/4", MAXIMUM 1-1/4".
 3. [OPTIONAL] AFTER SEALING SPACE BETWEEN DUCT AND GYPSUM WALL ASSEMBLY WITH HILTI FIRESTOP SEALANT, FASTEN STEEL ANGLE (MIN. 18 GA.) TO DUCT, THROUGH INSULATION, WITH 3/4" LONG NO. 8 SHEET METAL SCREWS SPACED 6" C/C. STEEL ANGLE TO OVERLAP DUCT MINIMUM 2" AND GYPSUM WALL ASSEMBLY BY MINIMUM 1". ANGLE DOES NOT HAVE TO BE FASTENED TO GYPSUM WALL ASSEMBLY.



HILTI, Inc.
 Tulsa, Oklahoma USA (800) 879-8000

Sheet	1 of 1
Scale	5/64" = 1"
Date	Jan. 17, 2015

Drawing No.
cUL
WL7007b