

CABLE BUNLDE THROUGH CONCRETE FLOOR/WALL OR BLOCK WALL

F-RATING = 3-HR.

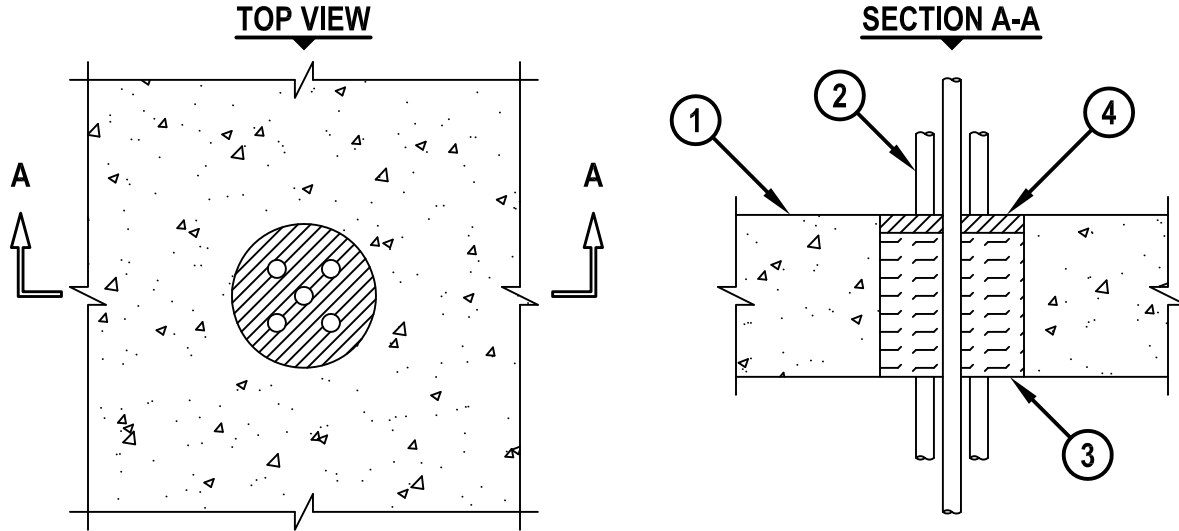
T-RATING = 0-HR.

L-RATING AT AMBIENT = LESS THAN 1 CFM / SQ FT

L-RATING AT 400° F = 4 CFM / SQ FT

W-RATING = CLASS I (SEE NOTE NO. 4 BELOW)

CAJ3070j.010515



1. CONCRETE FLOOR OR WALL ASSEMBLY (3-HR. FIRE-RATING) :
 - A. LIGHTWEIGHT OR NORMAL WEIGHT CONCRETE FLOOR (MINIMUM 4-1/2" THICK).
 - B. LIGHTWEIGHT OR NORMAL WEIGHT CONCRETE WALL (MINIMUM 5" THICK).
 - C. ANY UL/cUL CLASSIFIED CONCRETE BLOCK WALL.
2. CABLES (MAXIMUM 7/C NO. 12 AWG WITH PVC JACKET) SPACED APART MINIMUM 1/2" (SEE NOTE NO. 2 BELOW).
3. MINIMUM 4" THICKNESS MINERAL WOOL (MINIMUM 4 PCF DENSITY) TIGHTLY PACKED AND RECESSED TO ACCOMMODATE FIRESTOP SEALANT.
4. MINIMUM 1/2" DEPTH HILTI FS-ONE MAX OR FS-ONE INTUMESCENT FIRESTOP SEALANT, CP 601S ELASTOMERIC FIRESTOP SEALANT, CP 604 SELF-LEVELING FIRESTOP SEALANT, HILTI CP 606 FLEXIBLE FIRESTOP SEALANT, HILTI CFS-S SIL GG FIRESTOP SILICONE SEALANT, OR HILTI CFS-S SIL SL FIRESTOP SILICONE SEALANT.

- NOTES :**
1. MAXIMUM DIAMETER OF OPENING = 4".
 2. CABLES TO FILL MINIMUM 7%, TO MAXIMUM 20%, OF CROSS-SECTIONAL AREA OF OPENING.
 3. MINIMUM 1/2" DEPTH HILTI FS-ONE MAX OR FS-ONE INTUMESCENT FIRESTOP SEALANT, CP 601S ELASTOMERIC FIRESTOP SEALANT, CP 606 FLEXIBLE FIRESTOP SEALANT, OR HILTI CFS-S SIL GG FIRESTOP SILICONE SEALANT ARE REQUIRED ON BOTH SIDES OF A WALL ASSEMBLY.
 4. W-RATING APPLIES ONLY WHEN HILTI CP 601S ELASTOMERIC FIRESTOP SEALANT, HILTI CP 604 SELF-LEVELING FIRESTOP SEALANT, HILTI CFS-S SIL GG FIRESTOP SILICONE FIRESTOP SEALANT, OR HILTI CFS-S SIL SL FIRESTOP SILICONE SEALANT IS USED.
 5. L-RATING APPLIES ONLY WHEN HILTI FS-ONE MAX OR FS-ONE INTUMESCENT FIRESTOP SEALANT IS USED.



HILTI, Inc.
Tulsa, Oklahoma USA (800) 879-8000

Sheet	1 of 1
Scale	3/16" = 1"
Date	Jan. 05, 2015

Drawing No.

**CAJ
3070j**